



RS Series Anchors

Instruction/Specification Manual 2025

ENGLISH
VERSION

!WARNING TO USER!

You are required to read and use the Instruction/ Specification manual supplied at the time this device was shipped. Improper use and installation can result in serious injury or death. Follow inspection requirements before each use.

Material Specifications

Anchor Leg: 430 Stainless Steel

RS-10/20/Retro-Fit: 2 Layers 20ga

D-ring: Dacromet coated Stamped D-ring

Min. Tensile Strength: 5,000lb (22.5kN)

Fastener Holes: 3/16" d.

Compliance

OSHA 1926.502/ANSI Z359.18-17 Type A

**"Qualified or Competent Person" see

OSHA definition.

⊗ = Inspection references.

SAS= Super Anchor Safety.

Specified Use

Fall Protection Anchor: Fall arrest and fall restraint.

Max. User Wt: 310lb (140kg), including tools and equipment.

Max. Free Fall: 6ft.

Max. Arrest Force: 1,800lb.

Max. Slope: 12/12.

Metal Decking: RS-20 only. Min. 20ga. Requires to use Blazer™ 12-14 screws. See RS Metal Deck Addendum 08-2020. Request DHG fastener report 09-25-2020.

Personal Protective Equipment (PPE)

PPE must comply with current OSHA, ANSI or CSA standards.

Connectors: ANSI or CSA compliant snaphooks/carabiners w/3,600lb gate strengths.

Required to use a personal energy absorber (E/A) with a max. arrest force of 1,800lb. or a SLR-LE.

Framing Requirement

The wood structure to which an anchorage device is attached must be capable of sustaining 2 times the intended fall protection load or 5,000lb without engineering by a competent person.* Min. 2x4 top chord with min. 7/16" OSB sheathing. **WARNING!** Sheathing must be installed prior to use for fall protection. See Figs. 3, 4 and 13.

Non-Specified Use

Window washing anchors. Horizontal lifeline systems. Work positioning, scaffolding anchors, hoisting or lifting.

Fastener Specifications

See Table 1 for SAS factory supplied nails and screws.

Flush mount Bugle Head screws using a cordless drill with lowest possible torque setting.

WARNINGS!

- Always wear eye protection when installing fasteners.
- Do not install screws by hammering.
- Use only SAS certified fasteners.
- Do not reuse fasteners.
- Do not substitute with other types.

Fastener/Anchor Inspection Prior to Use

Check the underside of framing at anchor location and inspect for blow-outs. Remove anchors if any of the following conditions are present:

- Deformation of D-ring or shackle.
- Fastener blow-outs.
- Missing fasteners.
- See Fig. 4.
- Subjected to a free fall.

Table 1 SAS Supplied Fasteners/Service Load

Fasteners			▲ Max Service Load Applied	
Part No.	Min.	Types	0°-30° Angle	Over 30°
RS-10	6	3" SST Spiral Nails Bugle Head Screws	3,600lb See Fig.5	Fall Restraint Use Only! No risk of Free Fall
Retro-Fit	8			
RS-20	8			

▲ SAS energy absorber MAF = 1,800lb + safety factor x2.

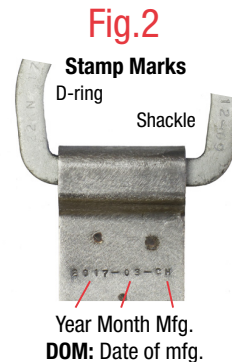
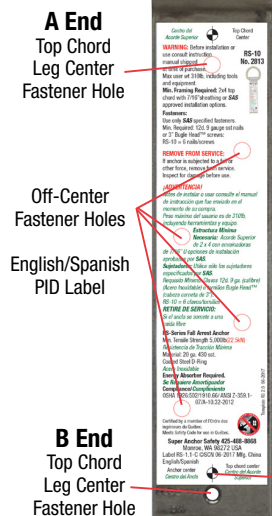


Fig.3.1

Fastener Locations



Fastener Types

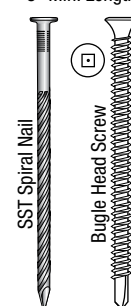


Fig.1

RS-Anchor Models

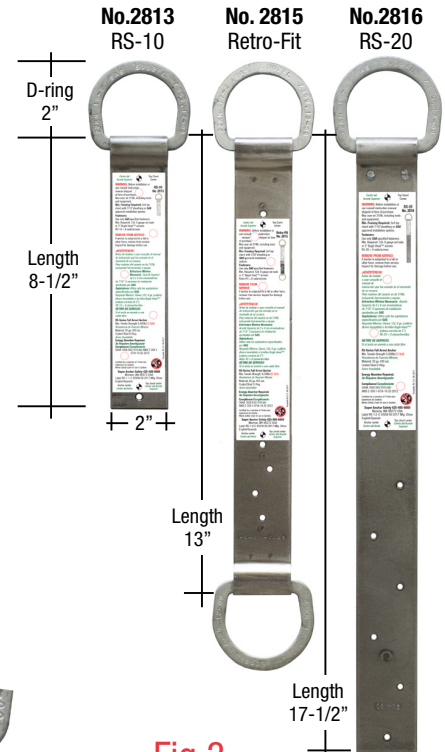


Fig.3

Anchor/Fastener Attachment

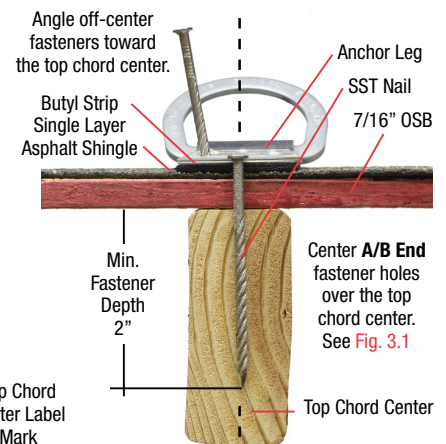


Fig.4

Fastener Blow-outs
Remove anchor and locate to another position.

WARNING!
DO NOT USE ANCHOR WITH BLOW-OUTS!