



SUPER ANCHOR SAFETY®

No.1029/S D-ShakL²

Instruction/Specification Manual 2025

ENGLISH
VERSION

!WARNING TO USER!
You are required to read and use the Instruction/Specification manual supplied at the time this device was shipped. Improper use and installation can result in serious injury or death. Follow inspection requirements before each use.

Material Specifications

No.1029: 430sst 3/16"x5"x2" base plate
D-ring: No.5003 forged steel w/HDG coating
1029-S D-ring: 316sst
Captive Backer Plate: 430sst 1/16" thickness
Bolt Holes: 2ea 9/16" d.
WS Screw Holes: 2ea. 5/16"
Min. Tensile Strength: 5,000lb(22.5kN)

Specified Use

Fall protection Anchor: Fall arrest, fall restraint, HLL systems, inverted and vertical when installed per/Figs.8,9 and 10.

User Specifications: 1 person max. user wt. 310lb(140kg), including tools and equipment.

Free Fall: Max.2ft w/WS screws. **Max. Slope:** 12/12

Bolt/Weld/Concrete Embedment: Max. 6ft.

Max. Arrest force: 1,800lb.

Personal Protective Equipment (PPE)

PPE must comply with current OSHA, ANSI or CSA standards.

Connectors: ANSI or CSA compliant snaphooks/carabiners w/3,600lb gate strengths. Required to use a personal energy absorber (E/A) with a max. arrest force of 1,800lb. or a SLR-LE.

Non-Specified Use

Window washing anchors, securing scaffolding, hoisting and lifting. Installation with nails or lag bolts. **

** Requires to be specified by a competent person. *

Wood Framing Requirement

The wood structure to which an anchorage device is attached must be capable of sustaining 2 times the intended fall protection load or 5,000lb without engineering by a competent person. *

Min. 2x4 top chord with min. 7/16" OSB sheathing.

WARNING! Sheathing must be installed prior to use for fall protection. See Figs.5, and 7.

Table 1. SAS Supplied WS Screws

Part No.	Pcs	Length	Driver
2084-3.5	10	3-1/2"	3/8" Hex
2078B-3.5	900		

WS Screws are supplied with a hex driver.

WARNINGS!

- Always wear eye protection when installing fasteners.
- Use only SAS certified fasteners.
- Do not substitute with other types.
- Do not install screws by hammering.
- Do not reuse fasteners.

Fig.3 Cordless Drill Installation



Use lowest torque setting possible to avoid over-tightening.

Do Not Reuse WS Screws

Self-drilling WS screws install w/3/8" hex driver.

WARNING!
Do Not Hammer Screws



Fig.4



Compliance

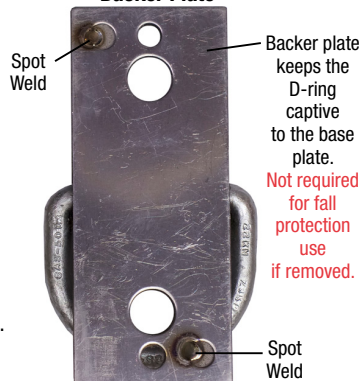
Bolt/Weld/Concrete Attached: ANSI Z359.18-17 Type D
WS Screws : OSHA 1926.502

✕ = Inspection references

SAS used in this manual = Super Anchor Safety

*"Qualified or Competent Person" see OSHA definition.

Fig.2
Backer Plate

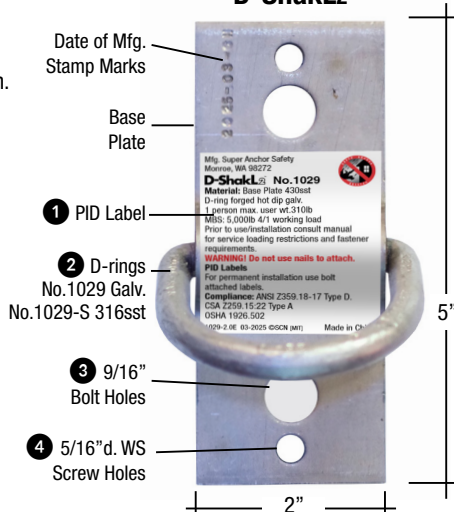


Backer plate keeps the D-ring captive to the base plate.
Not required for fall protection use if removed.

Spot Weld

Fig.1

No.1029 D-ShakL²



Date of Mfg. Stamp Marks

Base Plate

1 PID Label

2 D-rings

No.1029 Galv.

No.1029-S 316sst

3 9/16" Bolt Holes

4 5/16"d. WS Screw Holes

WARNING! Do not install WS screws thru 9/16" bolt holes.

Anchor Attachment and Fasteners

Bolt Attached: User supplied 1/2"d. grade 8 zinc plated, 18-8sst or A-307 all thread and locknuts. See Figs.8,10.

WS Screws: Temporary use only. See Table 1 and Figs.5,6.

Concrete/Epoxy Embedment/Poured in Place:

Installation and fasteners specified by a qualified person. *

Field Welded: Weld the base plate on all sides. See Fig.9.

Welding to be performed by a certified welder.

Fastener/Anchor Inspection Prior to Use

Check the underside top chords at anchor location. Remove anchors if any of the following conditions are present:

- 1 Missing PID label.
 - 2 Deformation of D-ring.
 - 3 WS screws installed thru bolt holes.
 - 4 Missing WS screws or non specified fasteners.
- Top chord WS screw blow-outs.
 - Subjected to a free fall.

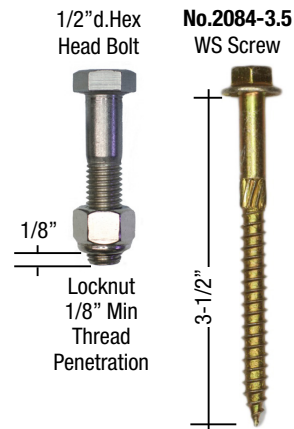


Fig.5

Center Anchor Over Top Chord



Fig.6

WS Screw Installation

