

Anchors • G-Clamp

Trades and Applications That Can Utilize the G-Clamp System:

- | | | |
|---------------------------|----------------------|------------------------|
| Window Cleaning | Painters | Residential Homes |
| Chimney Sweeps | Masons | Multifamily Structures |
| General Contractors | Pressure Washers | Commercial Properties |
| Maintenance & Cleaning | Satellite Installers | Apartments & Hotels |
| Homeowner Fall Protection | Solar Installers | Schools & Universities |
| Roofers | | |

“As the Safety Director for a painting contractor, I am very pleased with the Grappling Clamp Set. The painters feel very secure with the system and it helps them to be productive because they feel safe. I would urge all painting contractors to consider the Grappling Clamp Set to help their painters to complete high work safely.”

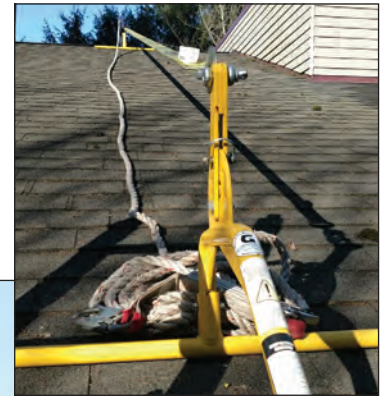
BILL POSS - SABELHAUS WEST

“I have used them on three separate job sites and I found them very easy and fast to set up (Setup time roughly 10 minutes). I have had myself and another guy tied off and we both felt very secure and safe!”

*JAMES JORGENSON -
J&J REPAIR AND RENOVATIONS*

“Not only is it simple to use, but it has made me feel safer than ever on any of the roofs I have used it on to date. In fact, without access to these units, I would have had to pass up several jobs because they were far too unsafe and lacking tie off points. I feel every paint company, homeowner and specialty contractor should own at least one of these life saving units. In short, the Grappling Clamps simply exceeded and set a new standard for modern jobsite safety.”

*NICHOLAS T. SPENCE -
PROFESSIONAL UNION PAINTER*



50