

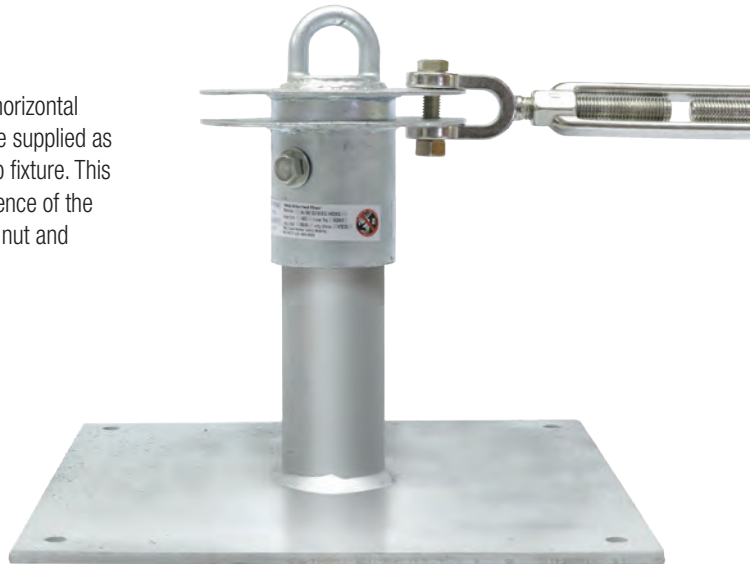
Commercial Anchors • CRA-4

CRA-4™ Horizontal Lifeline Anchor

A Super Anchor Safety exclusive design that allows up to 4 different horizontal lifeline components to be attached to single anchor point. Anchors are supplied as a 2 part system, the base with riser (blank CRA) and the 4-Way™ top fixture. This method facilitates the installation of the riser flashing without interference of the top fixture. The 4-Way is attached to the riser with a single bolt, lock nut and master seal washers for watertight connection.

Component Combinations:

- Horizontal Lifeline end termination
- 2 or more Horizontal Lifeline systems in series
- 90° and 45° Horizontal Lifeline intersections
- 3-and 4 way Horizontal Lifeline intersections

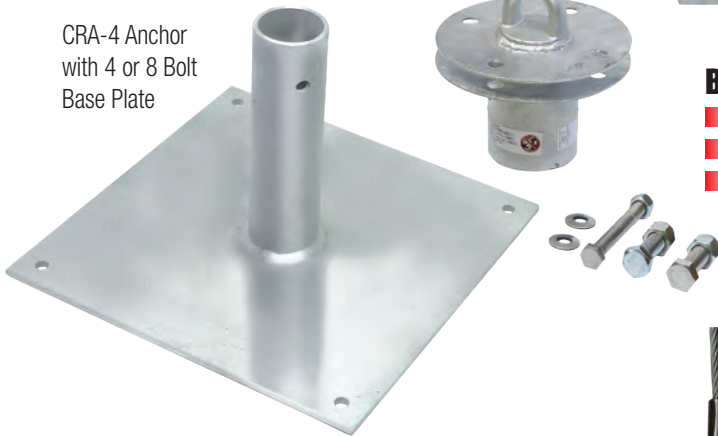


4-Way Fixture with Loop Top

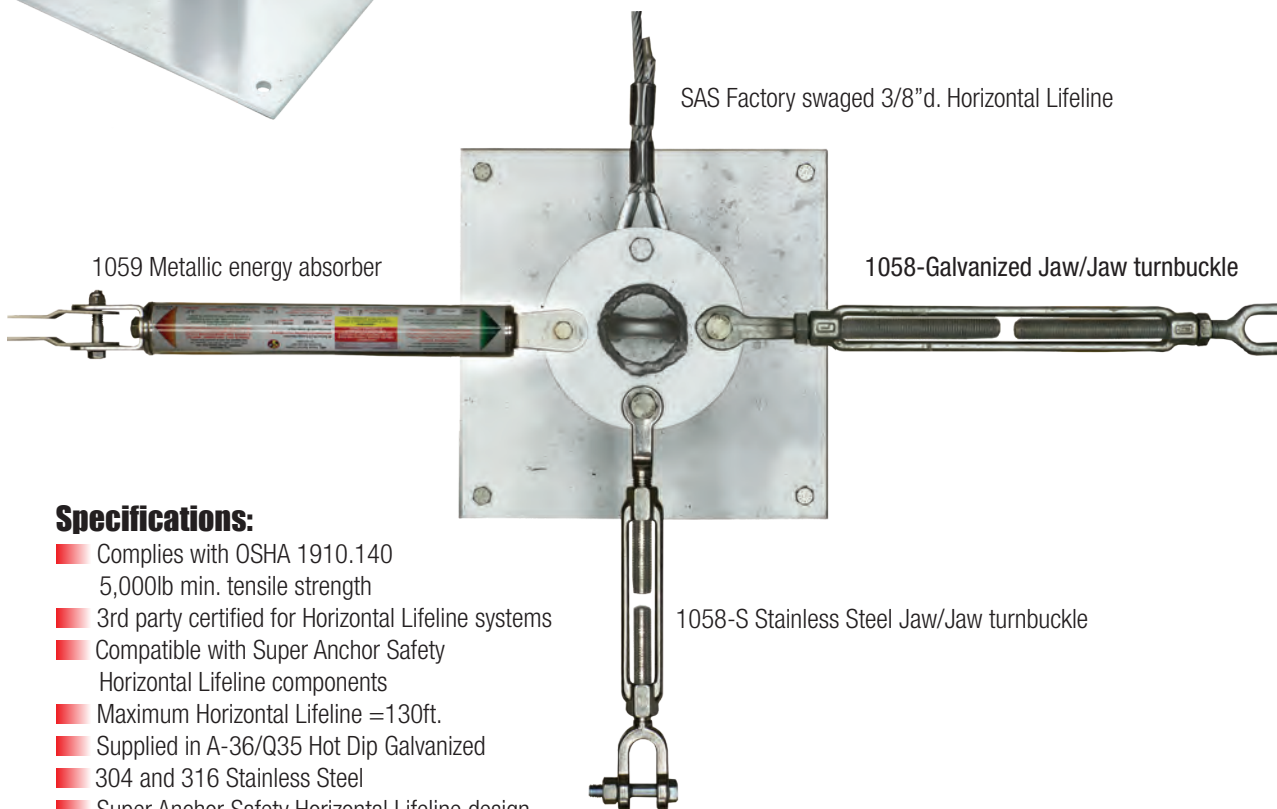
CRA-4 Anchor with 4 or 8 Bolt Base Plate

Bolt Pack Included:

- 1ea Stainless Steel attachment bolt with lock nut
- 2ea Master Seal Stainless Steel washers
- 2ea Seal Stainless Steel component attachment bolts with lock nuts



SAS Factory swaged 3/8" d. Horizontal Lifeline



Specifications:

- Complies with OSHA 1910.140 5,000lb min. tensile strength
- 3rd party certified for Horizontal Lifeline systems
- Compatible with Super Anchor Safety Horizontal Lifeline components
- Maximum Horizontal Lifeline =130ft.
- Supplied in A-36/Q35 Hot Dip Galvanized
- 304 and 316 Stainless Steel
- Super Anchor Safety Horizontal Lifeline design service upon request