

Swivel-D Anchor

Includes
5/8"x2.0" sst
Attachment
Bolt w/sst
Lock Nut

No.1028 Swivel-D™

Swivel-D

360° rotation+180° flip. Single person PPE anchor designed for bolt attachment to structural steel, plywood, threaded top risers and accessory base plates. One of our most versatile anchors. Sold in retail packaging.



Specifications

- Forged D-ring
 - 10,000lb Tensile Strength
 - Stainless Steel Shackle
 - 5/8"x2.0" sst Bolt
 - PID/Inspection Labels
 - Instruction Manual
- Pkg/wt. 1.0lb

User Specification

- Single person PPE
- HLL end anchors

Compliance

ANSI Z359.1-07/OSHA 1926.502

No.1028-DP6 Swivel-D Plate Anchor

Hot Dip Galvanized 6"x6"x3/8" bolt attached base plate.

- 5/8"x1-1/4" sst attachment bolt
 - 10,000lb min. tensile strength
 - Base plate attachment bolts not included
- Pkg/wt. 6.3lb



No.1028-DB6 Threaded Base Plate

- Hot Dip Galvanized 6"x6"x3/8"
 - 5/8"-11x1.0" Threaded bolt hole
 - Base plate attachment bolts not included
- Pkg/wt. 5.3lb



Compatible Attachments

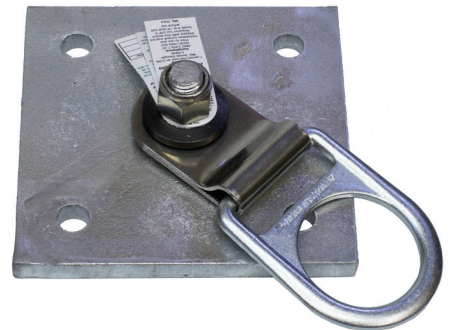
Structural Steel

Threaded Tops



No.1303-6B Swivel-D Plate

- No.1303-G Hot Dip Galvanized 6"x6"x3/8" Base Plate
 - No.1028 Swivel-D Anchor
 - 5/8" sst Lock Nut
 - Base plate attachment bolts not included
- Pkg/wt. 4.5lb



No.1028 Swivel-D Retail Pkg.

No.1303-6 Base Plate

- Hot Dip Galvanized 6"x6"x3/8"
 - 5/8"-11x1-1/2" Stud Bolt w/sst Lock Nut
 - Base plate attachment bolts not included
- Pkg/wt. 5.5lb

