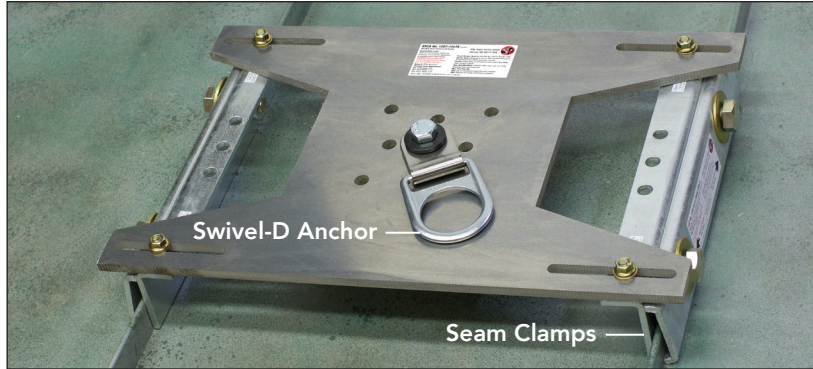


# Standing Seam Anchor

## Standing Seam Anchor

Another SAS exclusive design, our No.1207 Standing Seam Anchor is available in 3 lightweight aluminum base plate sizes to fit panel seam widths of 8-1/2" up to 26-1/2" wide. 3rd party tested to withstand a 5,000lb force in the specified load direction and installs with only 4 bolts and is compatible with a wide range of panel widths and profiles using our No.1208 and No.8511 RCT seam clamps.



## Specifications

**Permanent or Temporary Anchor**

**Min. Tensile Strength:** 5,000lb

**Base Plate:** 3/8" Aluminum plate

**No.1208 Seam Clamps:**

1/4" Hot Dip Galvanized Steel

**Clamp Bolts:** 3/4"-10 grade 5

**Frame i.d.:** Stamped date of mfg.

## User Specifications

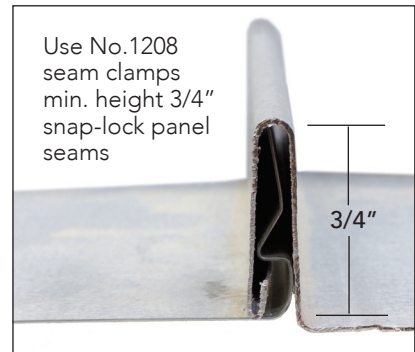
Single person 340lb

Single/Multiple person HLL

## Compliance

ANSI Z359.1/OSHA 1926.502

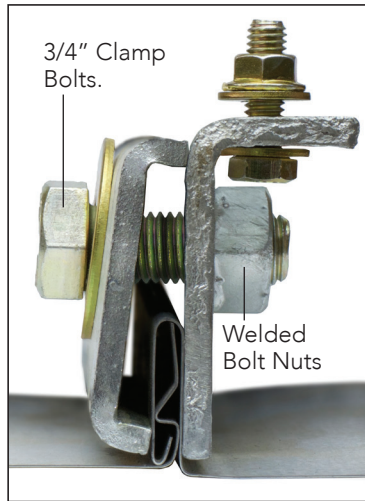
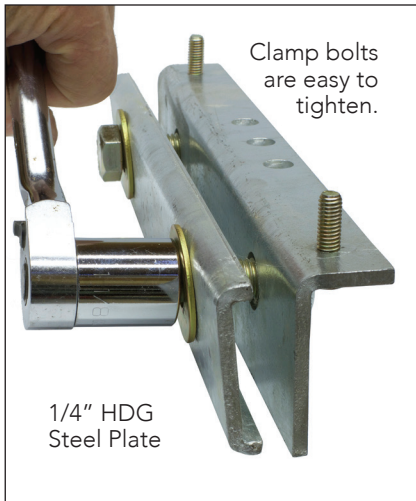
## Seam Compatibility



Do not use with low profile snap-lock seams



## No.1208-SSC Seam Clamp



## No.1207 Complete Kits

| Part No.    | wt/lb | SSC Clamps      | PPE Anchor            |
|-------------|-------|-----------------|-----------------------|
| 1207C-12x18 | 22.5  | 2pc No.1208 HDG | 1pc No.1028* Swivel-D |
| 1207C-14x22 | 24.5  |                 |                       |
| 1207C-18x24 | 26.5  |                 |                       |

\*Includes 5/8"x2-1/4 or 2-3/4" attachment bolt

## Components Only

| No.1207 Base Plate |       | Seam Clamp Otions     |                            |
|--------------------|-------|-----------------------|----------------------------|
| Part No.           | wt/lb | 2pc SSC               | 4pc RCT                    |
| 1207-12x18         | 5.5   | No.1208 HDG wt/15.9lb | No.8511-4 Aluminum wt/2lbs |
| 1207-14x22         | 7.5   |                       |                            |
| 1207-18x24         | 9.5   |                       |                            |

## Panel Width Adjustment

