

5,000lb Min. Tensile Strength
Max Proof Load 2,500lb

CRA-4 must be bolt attached, field welded or concrete embedded

Fig.1
CRA-4

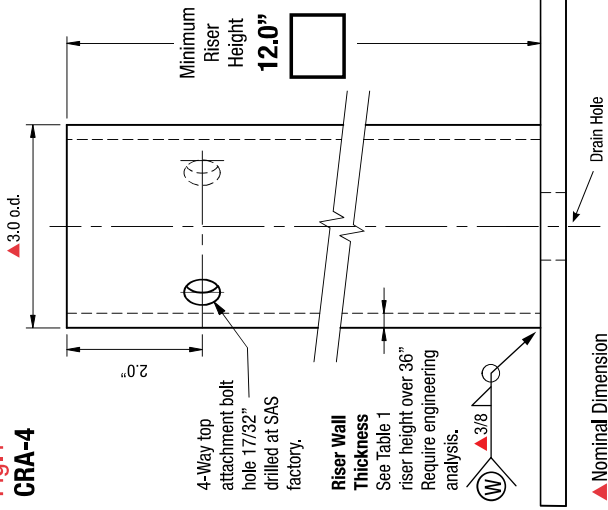


Fig.2
Riser Top View

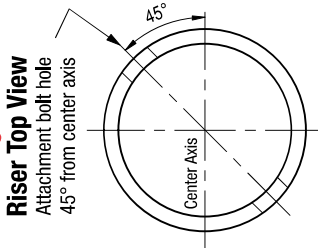


Fig.6

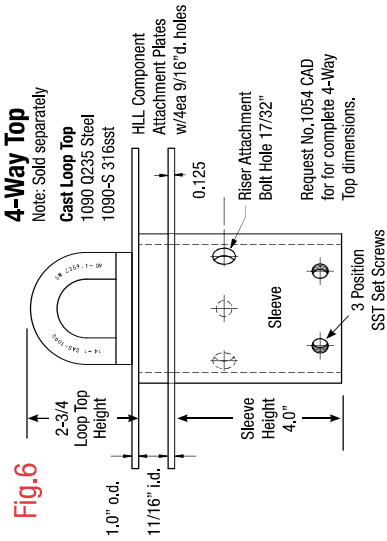


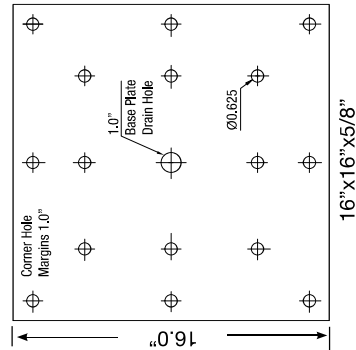
Table 1 Standard Dimensions

Risers	wt/lb	Wall	Holes	Base/Backer Plates	wt/lb
12"	5.8	Sch 40	4 or 8	16x16x3/8"	28
18"	8.8	Sch 40	4 or 8	16x16x5/8"	46
24"	17.5	Sch 80	4 or 8	12x12x5/8"	25
30"	22.0	Sch 80	4 or 8	12x12x 3/4"	31
36"	26.0	Sch 80	4 or 8		

▲ Standard base plate
 Riser wt/mch: Sch 40=0.487 Sch 80=0.730

Standard Size Base Plate

Fig.3 ▲ 16 Hole



Custom Base Plates

Fig.4 8 Hole

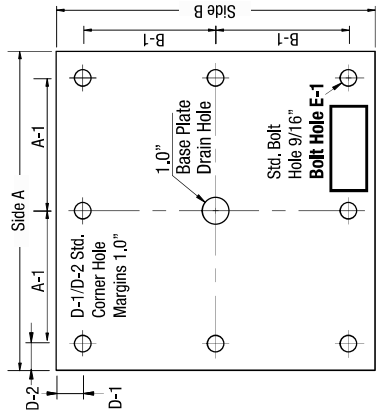
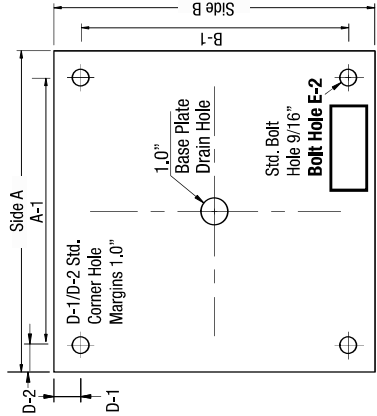


Fig.5 4 Hole



Part No.: 1032-4X

Index Pg.1

Part Name: CRA-4

Date:

Project Name:

By:

Contractor:

Address:

No. No. Lead Time

CRA-4 Backer Plates

Anchor Material Specifications

Riser Sch 40 Sch 80 Foam No HDG 304 sst

HL 0.203 0.276 Filled Foam Backer Finish Backer

4-Way Top

1054 1054-S 16 8 4 HDG Raw 304sst

HDG 304sst Hole Hole Hole Backer Backer Backer

4-Way tops are imported. Backer Plate must match base plate dimensions and bolt type

Base/Backer Plate Dimensions/Inches

A	A-1	B	B-1	C Thickness
D-1	D-2	CRA-4 Wt.	Backer Wt.	4-Way Top
E-1	E-2			7.0 lb

Print Name Date:

Sign Name

Imported Steel Certified A-36 Steel 97% USA Mfg.

Terms:

Anchors specified on this plan are custom mfg. and are not returnable after fabrication has been authorized by the customers purchase order. A 50% deposit or house credit account is required to begin fabrication and the balance paid upon completion or credit terms.

Authorization for Fabrication

I accept the fabrication specifications, number of units required, project name or customers name, are correct as shown on this plan.

