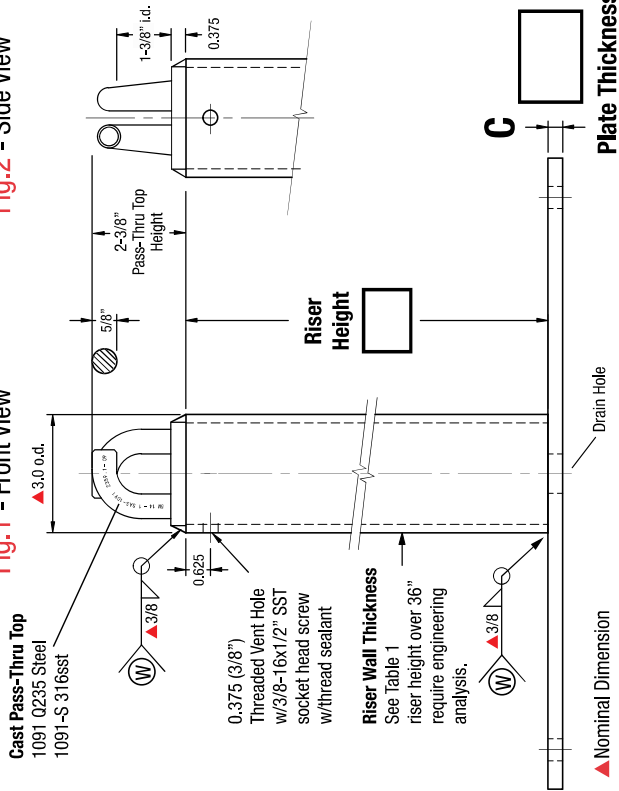


**5,000lb Min. Tensile Strength
DO NOT PROOF LOAD**

**CRA-PT Pass-Thru
Intermediate HLL Anchor Only**

Fig.1 - Front View

Fig.2 - Side View



Terms:
Anchors specified on this plan are custom mfg. and are not returnable after fabrication has been authorized by the customers purchase order. A 50% deposit or house credit account is required to begin fabrication and the balance paid upon completion or credit terms.

Authorization for Fabrication
I accept the fabrication specifications, number of units required, project name or customers name, are correct as shown on this plan.

Print Name _____ Date: _____
Sign Name _____

Expires in 30 days from date of customers PO.

Instructions: Sign authorization and include company or dealers purchase order.
Note: Steel prices are subject to change without notice. Unit price quotes are guaranteed only when a PO and deposit have been received. Written or verbal quotes expire after 15 days. Request re-quote before ordering.

Table 1 Standard Dimensions

Pass-Thru Risers	Base/Backer Plates
Riser wt/lb	Holes
8"	3.9
12"	5.8
18"	8.8
24"	17.5
30"	22.0
36"	26.0
	Sch 40
	Sch 80
	wt/lb
	52
	16
	4 or 8
	28
	46
	25

Riser wt/inch: Sch 40=0.487 Sch 80=0.730

1091/1091-S Pass-Thru Top = 1lb

Fig.3 52 Hole 16 Hole

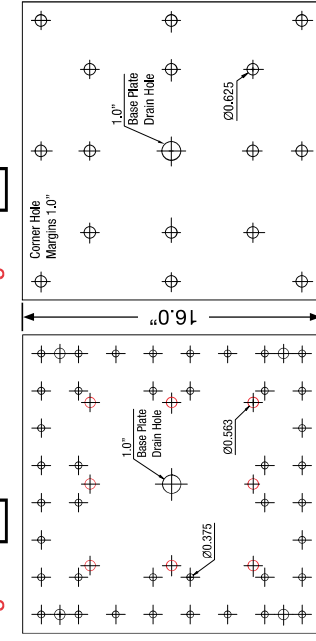


Fig.4 8 Hole 4 Hole

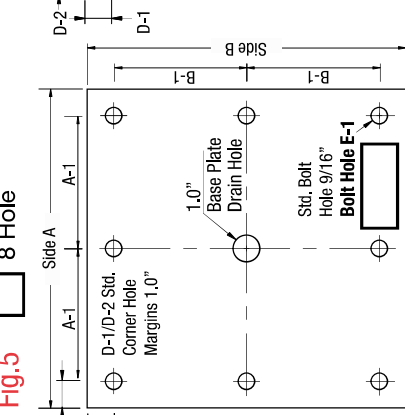
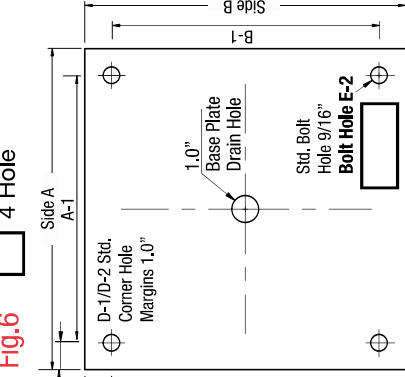


Fig.5 8 Hole 4 Hole



Base/Backer Plate Dimensions/Inches

A	A-1	B	B-1	C Thickness
D-1	D-2	CRA-PT Wt.	Backer Wt.	Riser over 36"
E-1	E-2			

Backer Plate

HDG Raw Backer 304sst Backer Imported Steel Certified A-36 Steel 97% USA Mfg.

Backer plate to match base plate dimension and bolt hole type

Pass-Thru Type

1091 1091-S 316sst 52 Hole 16 Hole 8 Hole 4 Hole

Pass-Thru tops are imported cast steel

Anchor Material Specifications

Riser HT. Sch 40 0.203 Sch 80 0.276 Foam Filled No Foam HDG Finish 304 sst

No. No. Backer Plates Lead Time

Part No.: **1031-PX** Index Pg.2
Part Name: **CRA-PT** Date:
Project Name: By:
Contractor:
Address:

