

**5,000lb Min. Tensile Strength
Max Proof Load 2,500lb**

CRA-W

Fig.1 - Front View

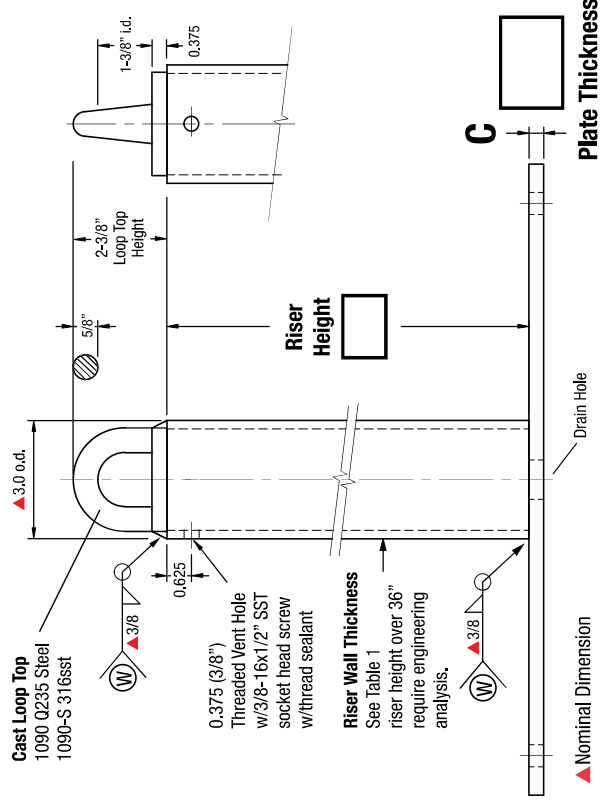


Fig.2 - Side View

Terms:
Anchors specified on this plan are custom mfg. and are not returnable after fabrication has been authorized by the customers purchase order. A 50% deposit or house credit account is required to begin fabrication and the balance paid upon completion or credit terms.

Authorization for Fabrication
I accept the fabrication specifications, number of units required, project name or customers name, are correct as shown on this plan.

Print Name _____ Date: _____
Sign Name _____

Expires in 30 days from date of customers PO.
Instructions: Sign authorization and include company or dealers purchase order.
Note: Steel prices are subject to change without notice. Unit price quotes are guaranteed only when a PO and deposit have been received. Written or verbal quotes expire after 15 days. Request re-quote before ordering.

Table 1 Standard Dimensions

Risers		Base/Backer Plates	
Riser	wt/lb	Holes	wt/lb
8"	3.9	52	28
12"	5.8	16	46
18"	8.8	4 or 8	25
24"	17.5	16	31
30"	22.0		
36"	26.0		

Riser wt/inch: Sch 40=0.487 Sch 80=0.730
1090/1090-S Loop Top = 1lb

Standard Size Base Plates

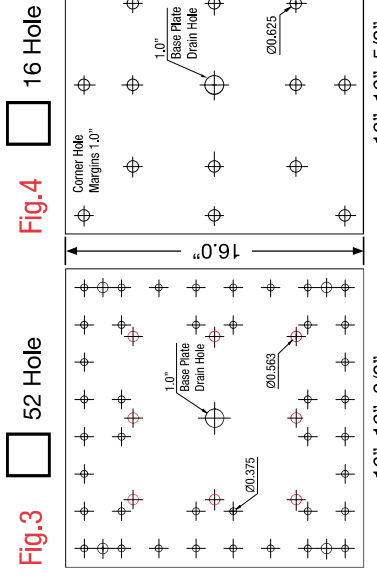


Fig.3 52 Hole

Fig.4 16 Hole

Fig.5 8 Hole

Fig.6 4 Hole

Part No.: 1031-X **Index Pg.1**

Part Name: CRA-W **Date:**

Project Name: **By:**

Contractor:

Address:

No. **No.** **Lead Time**

CRA-W **Backer Plates**

Anchor Material Specifications

Riser HT. Sch 40 Sch 80 Foam No HDG 304 sst

0.203 0.276 Filled Foam Finish

Loop Top Specifications

1090 1090-S **Base Plate Type**

Q235 316sst 52 Hole 16 Hole 8 Hole 4 Hole

Loop tops are imported cast steel

Backer Plate

HDG Raw 304sst Imported Certified 97% USA Mfg.

Backer Backer Steel A-36 Steel

Backer plate to match base plate dimension and bolt hole type

Fig.3 52 Hole

Fig.4 16 Hole

Fig.5 8 Hole

Fig.6 4 Hole

Custom Base Plates

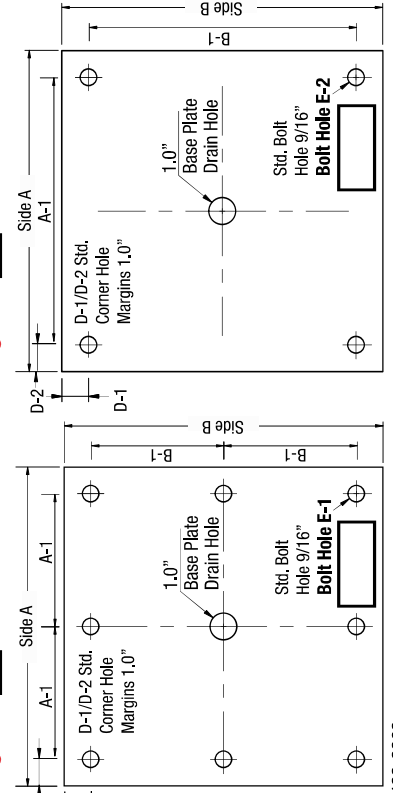


Fig.5 8 Hole

Fig.6 4 Hole

