

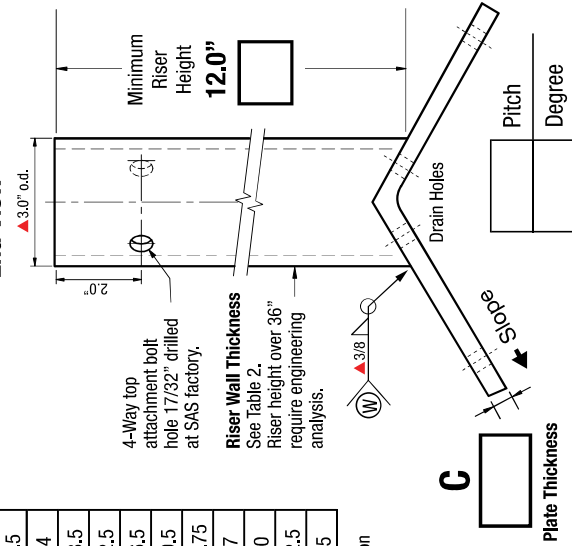
5,000lb Min. Tensile Strength
Max Proof Load 2,500lb

CRM-4 Ridge Mount Anchor
HLL End/Intermediate Anchor
CRA-4 must be bolt attached, field welded or concrete embedded

Table 1: Slope

Pitch	Degree	
<input type="radio"/>	1/12	4.5
<input type="radio"/>	2/12	9.5
<input type="radio"/>	3/12	14
<input type="radio"/>	4/12	18.5
<input type="radio"/>	5/12	22.5
<input type="radio"/>	6/12	26.5
<input type="radio"/>	7/12	30.5
<input type="radio"/>	8/12	33.75
<input type="radio"/>	9/12	37
<input type="radio"/>	10/12	40
<input type="radio"/>	11/12	42.5
<input type="radio"/>	12/12	45

Fig.1 CRM-4 End View



Terms:
Anchors specified on this plan are custom mfg. and are not returnable after fabrication has been authorized by the customers purchase order. A 50% deposit or house credit account is required to begin fabrication and the balance paid upon completion or credit terms.

Authorization for Fabrication
I accept the fabrication specifications, number of units required, project name or customers name, are correct as shown on this plan.

Print Name: _____ Date: _____
Sign Name: _____

Expires in 30 days from date of customers PO.
Instructions: Sign authorization and include company or dealers purchase order.
Note: Steel prices are subject to change without notice. Unit price quotes are guaranteed only when a PO and deposit have been received. Written or verbal quotes expire after 15 days. Request re-quote before ordering.

Fig.2 Custom 4 Hole Base Plate

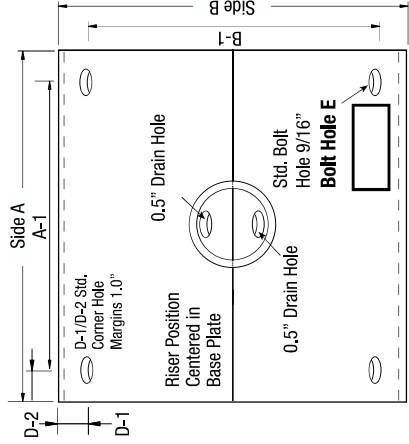


Fig.3 CRM-4 Side View

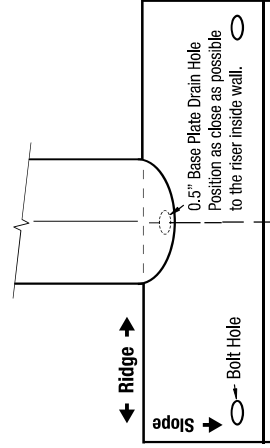


Fig.4

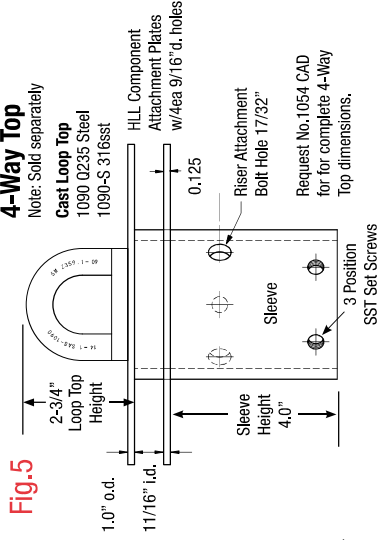
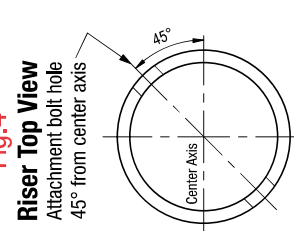


Fig.5



Base/Backer Plate Dimensions/Inches

A	A-1	B	B-1	C Thickness
D-1	D-2	E-Bolt Hole	CRM-4 Wt.	Backer Wt.
4-Way Top				
	7.0 lb			

Table 2 Standard Dimensions

Riser	Base/Backer Plates		wt/lb
	Riser wt/lb	Holes	
12"	5.8	Sch 40	28
18"	8.8	Sch 40	46
24"	17.5	Sch 80	25
30"	22.0	Sch 80	31
36"	26.0	Sch 80	31

▲ Welded Ridge Plate see Fig.1.1
Riser w/inch: Sch 40=0.487 Sch 80=0.730

