

Part No.:	<b>1031-PX</b>	Index Pg.5
Part Name:	<b>CRM-AP</b>	Date:
Project Name:		By:
Contractor:		
Address:		
No. CRM-AP	No. Backer Plates	Lead Time

**Anchor Material Specifications**

Riser HT.  Sch 40  Sch 80  Foam Filled  No Foam  HDG Finish  304 SST

**Pass-Thru Type**

1091-Q235  1091-S316sst

Pass-Thru tops are imported cast steel

**Angle of Slope**

Pitch  Degree

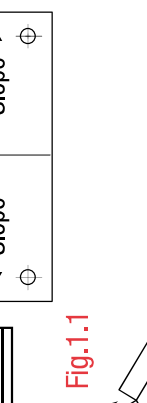
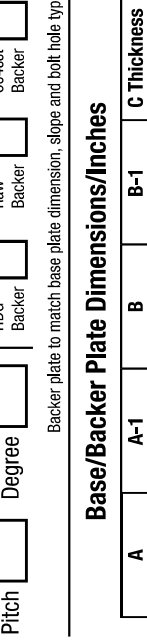
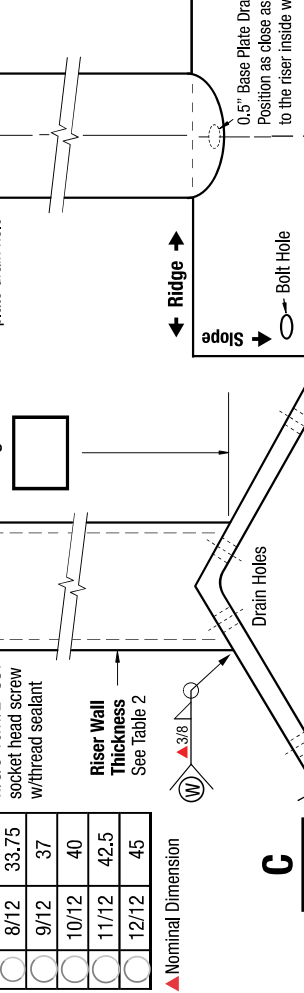
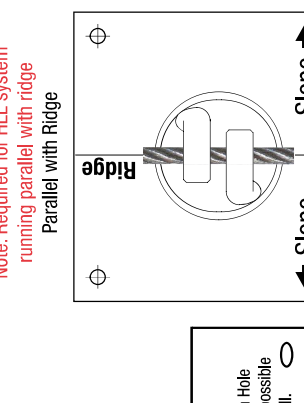
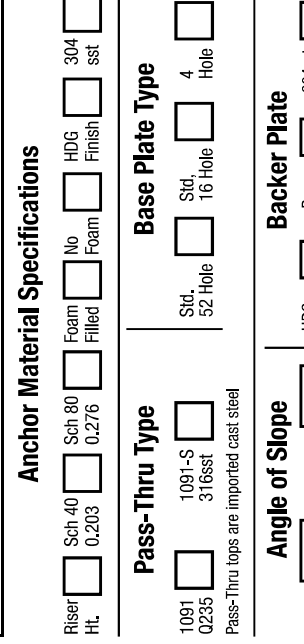
**Backer Plate**

HDG Backer  Raw Backer  304sst Backer

**Table 1: Slope**

Pitch	Degree
<input type="checkbox"/>	1/12
<input type="checkbox"/>	4.5
<input type="checkbox"/>	2/12
<input type="checkbox"/>	9.5
<input type="checkbox"/>	3/12
<input type="checkbox"/>	14
<input type="checkbox"/>	4/12
<input type="checkbox"/>	18.5
<input type="checkbox"/>	5/12
<input type="checkbox"/>	22.5
<input type="checkbox"/>	6/12
<input type="checkbox"/>	26.5
<input type="checkbox"/>	7/12
<input type="checkbox"/>	30.5
<input type="checkbox"/>	8/12
<input type="checkbox"/>	33.75
<input type="checkbox"/>	9/12
<input type="checkbox"/>	37
<input type="checkbox"/>	10/12
<input type="checkbox"/>	40
<input type="checkbox"/>	11/12
<input type="checkbox"/>	42.5
<input type="checkbox"/>	12/12
<input type="checkbox"/>	45

▲ Nominal Dimension



**Table 2 Standard Dimensions**

Riser	Pass-Thru Risers		Base/Backer Plates		C Thickness
	wt/lb	Wall	Holes	Base/Plate/”	
8"	3.9				Imported Steel
12"	5.8				Certified A-36 Steel
18"	8.8	Sch 40	52	16x16x3/8"	28
24"	17.5			△16x16x5/8"	46
30"	22.0			△12x12x5/8"	25
36"	26.0	Sch 80	4		97% USA Mfg.

**Table 2 Standard Dimensions**

▲16 hole plate not shown on this form.

▲ Welded Ridge Plate see Fig. 1.1

Riser wt/inch: Sch 40=0.487 Sch 80=0.730

1091/1091-S Pass-Thru Top = 1lb

**Terms:**

Anchors specified on this plan are custom mfg. and are not returnable after fabrication has been authorized by the customers purchase order. A 50% deposit or house credit account is required to begin fabrication and the balance paid upon completion or credit terms.

**Authorization for Fabrication**

I accept the fabrication specifications, number of units required, project name or customers name, are correct as shown on this plan.

Print Name: \_\_\_\_\_ Date: \_\_\_\_\_

Sign Name: \_\_\_\_\_

**Expires in 30 days from date of customers PO.**

Instructions: Sign authorization and include company or dealers purchase order. Note: Steel prices are subject to change without notice. Unit price quotes are guaranteed only when a PO and deposit have been received. Written or verbal quotes expire after 15 days. Request re-quote before ordering.

**Fig. 3 Standard Base Plate**

52 Hole Note: Position corner holes as shown to match base and backer plate alignment.

Asymmetrical Corner Holes

1.0" Vent Hole Base Plate Drain Hole

0.375 Vent Hole

0.5" Drain Hole

0.563

0.375

16" x 16" x 3/8"

**Fig. 4 Custom Base Plate**

4 Hole

Side A

Side B

D-2

D-1

D-1/D-2 Std. Corner Hole Margins 1.0"

Riser Position Centered in Base Plate

0.5" Drain Hole

Std. Bolt Hole 9/16"

Bolt Hole E

**CRM-AP**

**Ridge Mount Pass-Thru Anchor**

**Intermediate HLL Anchor Only**

**5,000lb Min. Tensile Strength**

**DO NOT PROOF LOAD**

**Pass-Thru Orientation**

**Fig. 5 CRM-AP**

Note: Required for HLL system running parallel with ridge Parallel with Ridge

**Fig. 1 CRM-AP End View**

**Fig. 2 CRM-AP Side View**

**Fig. 3 Standard Base Plate**

**Fig. 4 Custom Base Plate**

**Fig. 5 CRM-AP**

Super Anchor Safety® 17731-147th St SE Monroe, WA USA 98272 Ph. 425-488-8868 Form: CRM-AP Live Worksheet ©SCN 06-2022 [MIT]