

CROS-TR

Threaded Riser Anchor CAL-OSHA Compliant

5,000lb Min. Tensile Strength Max Proof Load 2,500lb

CAL-OSHA Title 8 Sec. 3296

Fig.1
CROS-TR
Riser centered in base plate

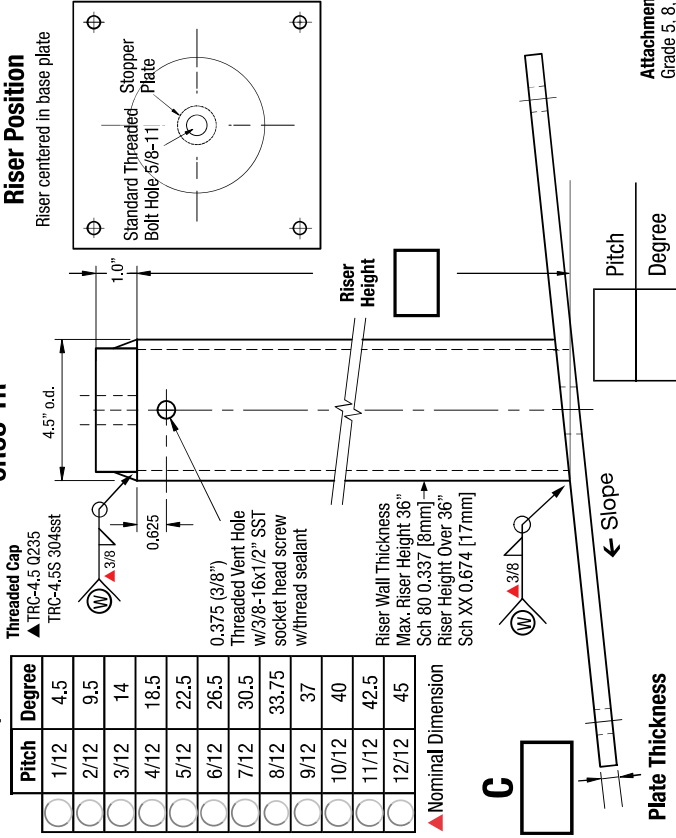


Table 1: Slope

Pitch	Degree
1/12	4.5
2/12	9.5
3/12	14
4/12	18.5
5/12	22.5
6/12	26.5
7/12	30.5
8/12	33.75
9/12	37
10/12	40
11/12	42.5
12/12	45

▲ Nominal Dimension

Terms:
Anchors specified on this plan are custom mfg. and are not returnable after fabrication has been authorized by the customers purchase order. A 50% deposit or house credit account is required to begin fabrication and the balance paid upon completion or credit terms.

Authorization for Fabrication
I accept the fabrication specifications, number of units required, project name or customers name, are correct as shown on this plan.

Print Name _____ Date: _____

Sign Name _____

Expires in 30 days from date of customers PO.
Instructions: Sign authorization and include company or dealers purchase order.
Note: Steel prices are subject to change without notice. Unit price quotes are guaranteed only when a PO and deposit have been received. Written or verbal quotes expire after 15 days. Request re-quote before ordering.

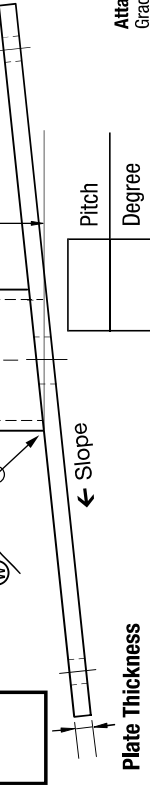


Fig.3 Riser Cap Bolt Hole

Fig.4
Standard Base Plate 12"x12"
See Table 2 for Base Plate Thickness

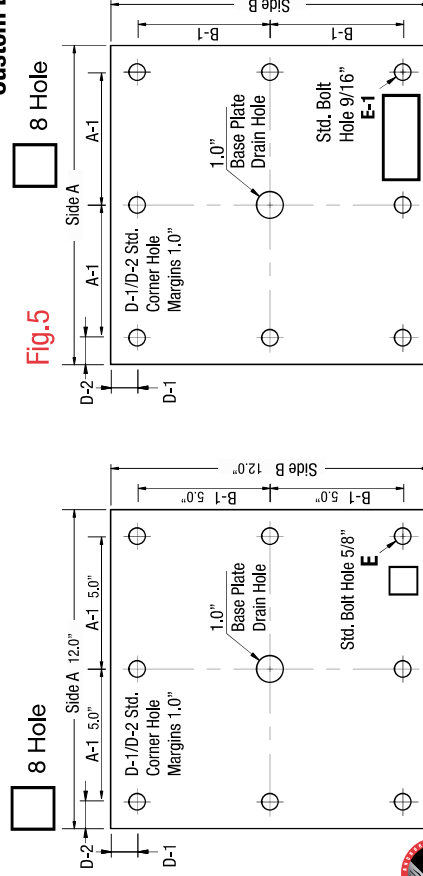


Fig.5
Custom Base Plate
8 Hole

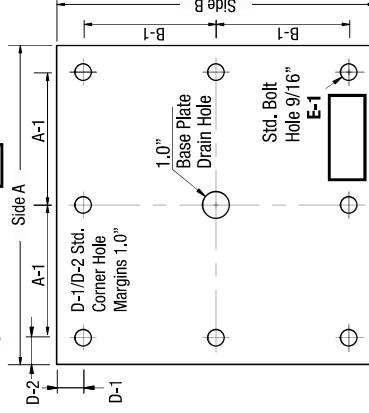
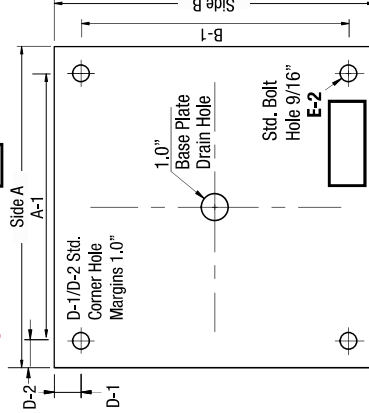


Fig.6
Custom Base Plate
4 Hole



Part No.:	1486-X	Index Pg.9	
Part Name:	CROS-TR	Date:	
Project Name:		By:	
Contractor:			
Address:			

No.:	No.:	Lead Time	
CROS-TR	Backer Plates		

Riser/Base Plate Material Specifications

Riser HT. Sch 80 0.337 Sch XX 0.674 Foam Filled No Foam HDG Finish 304 sst

Riser Cap

TRC 4.5 Q235 TRC-4.5S 304sst Std. 8 Hole 8 Hole 4 Hole Hole Hole Hole Hole Hole Hole

▲ Imported riser cap

Angle of Slope

Pitch Degree HDG Backer Raw Backer 304sst Backer Backer Backer Backer

Backer plate to match base plate dimension and bolt hole type

Base / Backer Plate Dimensions/Inches

A	A-1	B	B-1	C Thickness
D-1	D-2	CROS-TR Wt.	Backer Wt.	E 5/8"
E-1	E-2	F		

Table 2 Standard Dimensions

Riser	Base/Backer Plates		wt/lb
	Holes	BasePlate"	
8"	10.0	12x12x5/8	25
12"	15.0		
18"	23.0	Sch 80	4
24"	30.0	0.337	8
30"	38.0		
36"	45.0		

Imported Steel
Certified A-36 Steel
97% USA Mfg.

