

**5,000lb Min. Tensile Strength**  
**Max Proof Load 2,500lb**  
*CAL-OSHA Title 8 Sec. 3296*

# CROS CAL-OSHA Sloped Anchor

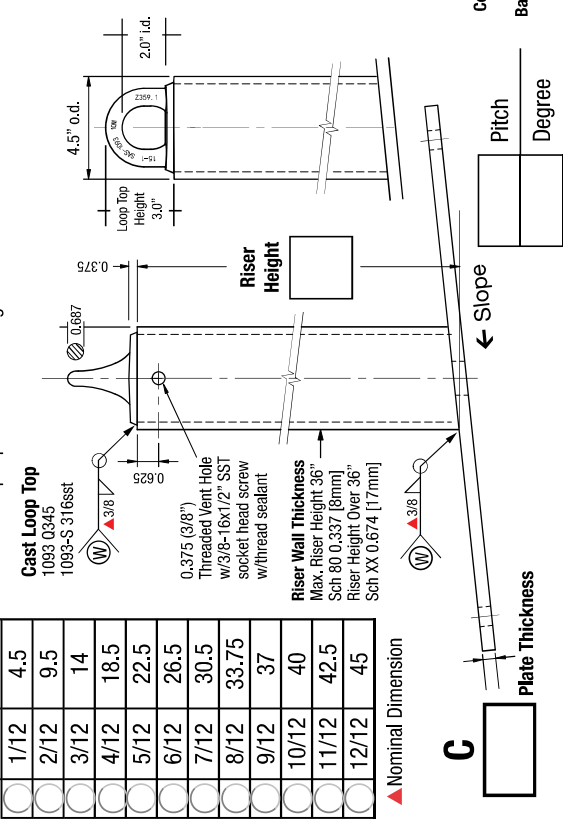
**Terms:**  
*Anchors specified on this plan are custom mfg. and are not returnable after fabrication has been authorized by the customers purchase order. A 30% deposit or house credit account is required to begin fabrication and the balance paid upon completion or credit terms.*

**Authorization for Fabrication**  
 I accept the fabrication specifications, number of units required, project name or customers name, are correct as shown on this plan.

Print Name \_\_\_\_\_ Date: \_\_\_\_\_  
 Sign Name \_\_\_\_\_

**Expires in 30 days from date of customers PO.**  
 Instructions: Sign authorization and include company or dealers purchase order.  
*Note: Steel prices are subject to change without notice. Unit price quotes are guaranteed only when a PO and deposit have been received. Written or verbal quotes expire after 15 days. Request re-quote before ordering.*

**Fig.1 CROS-A** Loop Top Parallel with Ridge



**Table 1: Slope**

**Fig.1 CROS-A** Loop Top Parallel with Ridge

**Fig.2 CROS-B** Loop Top Perpendicular to Ridge

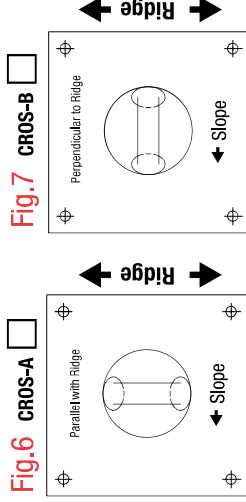
**Terms:**  
*Anchors specified on this plan are custom mfg. and are not returnable after fabrication has been authorized by the customers purchase order. A 30% deposit or house credit account is required to begin fabrication and the balance paid upon completion or credit terms.*

**Authorization for Fabrication**  
 I accept the fabrication specifications, number of units required, project name or customers name, are correct as shown on this plan.

Print Name \_\_\_\_\_ Date: \_\_\_\_\_  
 Sign Name \_\_\_\_\_

**Expires in 30 days from date of customers PO.**  
 Instructions: Sign authorization and include company or dealers purchase order.  
*Note: Steel prices are subject to change without notice. Unit price quotes are guaranteed only when a PO and deposit have been received. Written or verbal quotes expire after 15 days. Request re-quote before ordering.*

## Loop Top Orientation



**Fig.3 Standard Base Plate 12"x12"**  
 See Table 2 for Base Plate Thickness

