

Use only for HLL Intermediate Anchors
DO NOT PROOF LOAD

Fig.1 - Front View

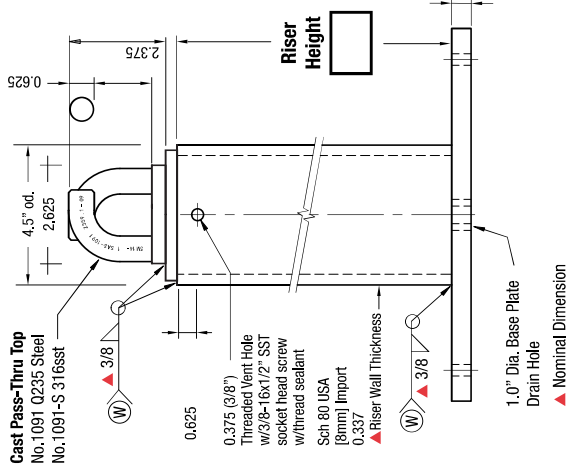
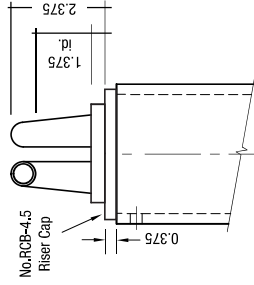


Fig.2 - Side View



Strength Specifications:
Anchors specified in this plan have a minimum tensile strength of 5,000lb

Custom Order Terms:

- Custom anchors are subject to the following terms:
- Submitters of end users* signed worksheet
- Dealers signed purchase order
- 50% deposit received to start fabrication
- Shipping finished order subject to dealer standard terms
- *Dealers are not authorized to sign-off on worksheets.

Authorization for Fabrication
The end user accepts the fabrication specifications, number of units required, and project name are correct as shown on this plan.

Print Name _____ Date: _____

Sign Name _____

Price Quotes/Changes

Written price quotes not executed by customers PO, and 50% deposit expire in 15 days, and may be subject to increased labor, material or shipping costs.

Part No.:	1400-PX	Page: 8
Part Name:	CRO-PT Pass-Thru Anchor	Date:
Project Name:		By:
Contractor:		
Address:		
No. CRO-PT	No. Backer Plates	Lead Time

Riser/Base Plate Material Specifications

Riser HT. Sch 80 0.337 Foam Filled No Foam HDG Finish 304 sst

Pass-Thru Top

1091 Q235 1091-S 316 sst Std. 8 Hole 8 Hole 4 Hole

Backer Plate

HDG Backer Raw Backer 304sst Backer Imported Steel Certified A-36 Steel 97% USA Mfg.

Backer plate to match base plate dimension and bolt hole type

Base / Backer Plate Dimensions/Inches

A	A-1	B	B-1	C Thickness
D-1	D-2	CRO-PT Wt.	Backer Wt.	E 5/8"
E-1	E-2			

Compliance:

ANSI Z359.1
OSHA 1926.502

Fig.3 Pass-Thru Top Orientation

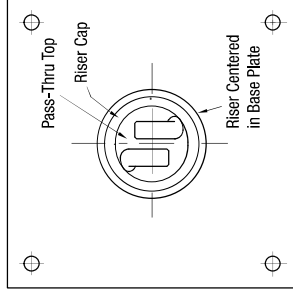


Table 1 Standard Dimensions

Riser	wt/lb	Wall	Base/Backer Plates	wt/lb
8"	10.0			
12"	15.0	Sch 80	12x12x5/8	25
18"	23.0	80		
24"	30.0	0.337		
30"	38.0			
36"	45.0		12x12x3/4	31

Riser wt/inch Sch 80=1.25
Pass-Thru Top wt. = 1.0lb

Custom Base Plate

