

5,000lb Min. Tensile Strength
Max Proof Load 2,500lb
 CAL-OSHA Title 8 Sec. 3296

CRO-TR CAL-OSHA
Threaded Riser Anchor

Threaded Cap
 ▲ TRC-4.5 0.235
 ▲ TRC-4.5S 304sst

Fig. 1

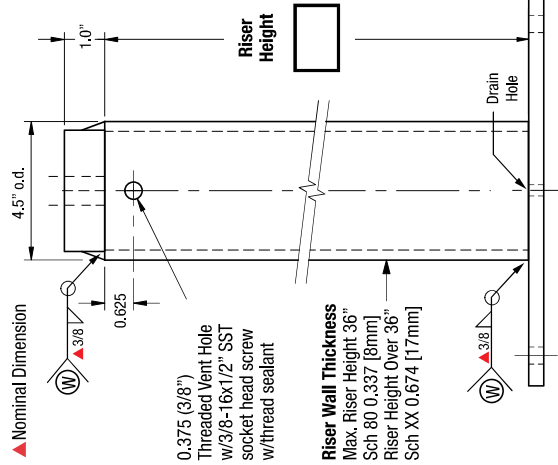
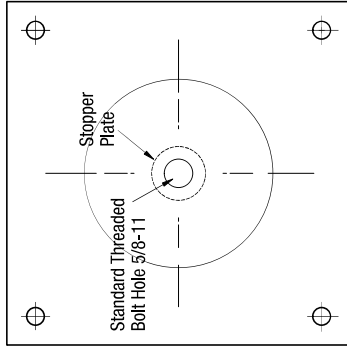


Fig. 2

Riser Position

Riser centered in base plate



Terms:

Anchors on this plan are custom mfg. and are not returnable after fabrication has been authorized by the customers purchase order. A 50% deposit or house credit account is required to begin fabrication and the balance paid upon completion or credit terms.

Authorization for Fabrication

I accept the fabrication specifications, number of units required, project name or customers name, are correct as shown on this plan.

Print Name _____ Date: _____

Sign Name _____

Expires in 30 days from date of customers PO.

Instructions: Sign authorization and include company or dealers purchase order. Note: Steel prices are subject to change without notice. Unit price quotes are guarantee only when a PO and deposit have been received. Written or verbal quotes expire after 15 days. Request re-quote before ordering.

Part No.:	1496-X	Index Pg.9
Part Name:	CRO-TR Anchor	Date: _____
Project Name:		By: _____
Contractor:		
Address:		
No. CRO-TR	No. Backer Plates	Lead Time

Riser/Base Plate Material Specifications

Riser HT Sch 80 0.337 Sch XX 0.674 Foam Filled No Foam HDG Finish 304 sst

Riser Cap

TRC-4.5 TRC-4.5S Std. 8 Hole 8 Hole 4 Hole
 ▲ Q235 304sst Imported Riser Cap

Backer Plate

HDG Backer Raw Backer 304sst Backer Imported Steel Certified A-36 Steel 97% USA Mfg.

Backer plate to match base plate dimension and bolt hole type

Fig. 4

Standard Base Plate 12"x12"

See Table 1 for Base Plate Thickness

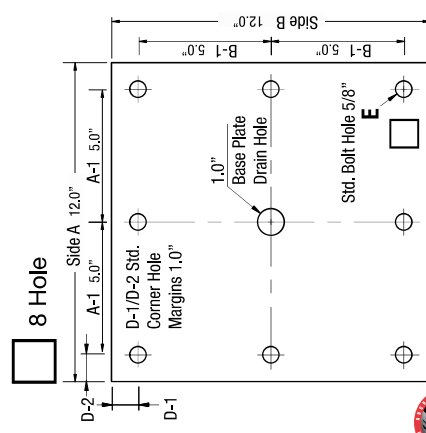


Fig. 5

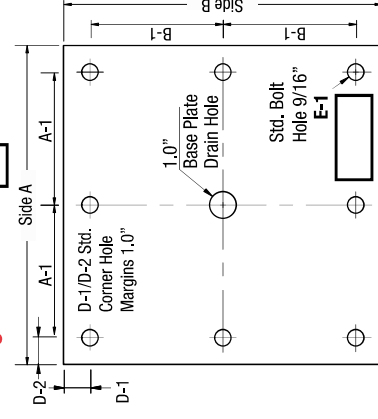


Fig. 6

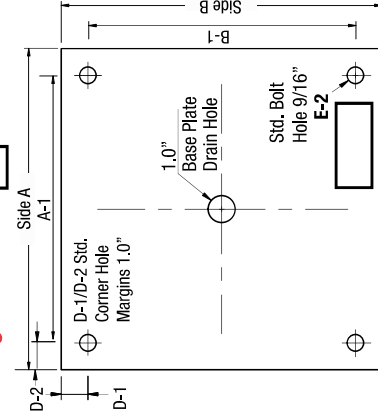
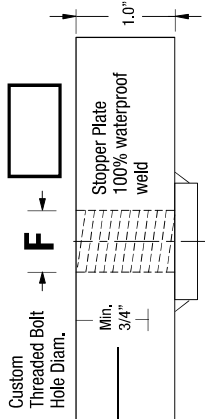


Fig. 3

Riser Cap Bolt Hole



Attachment Bolt

Grade 5, 8, or sst. Length must be sized for 3/4" min. penetration into threaded bolt hole.

Plate Thickness

Base/Backer Plate Dimensions/Inches

A	A-1	B	B-1	C Thickness
D-1	D-2	CRO-TR Wt.	Backer Wt.	E 5/8"
E-1	E-2	F-diam.	Riser over 36"	

Table 1 Standard Dimensions

Riser	Risers		Base/Backer Plates	
	wt/lb	Wall	Holes	Base/Plate"/wt/lb
8"	10.0		12x12x5/8	25
12"	15.0	Sch 80	4	12x12x 3/4 31
18"	23.0	Sch 80	or	
24"	30.0	0.337	8	
30"	38.0			
36"	45.0			

Riser w/finch Sch 80= 1.25
 TRC 4.5 Riser Cap = 3.8lb

