

5,000lb Min. Tensile Strength
Max Proof Load 2,500lb
 CAL-OSHA Title 8 Sec. 3296

CRO CAL-OSHA Anchor

Terms:
 Anchors specified on this plan are custom mfg. and are not returnable after fabrication has been authorized by the customers purchase order. A 50% deposit or house credit account is required to begin fabrication and the balance paid upon completion or credit terms.

Authorization for Fabrication
 I accept the fabrication specifications, number of units required, project name or customers name, are correct as shown on this plan.

Print Name _____ Date: _____
 Sign Name _____
Expires in 30 days from date of customers PO.
 Instructions: Sign authorization and include company or dealers purchase order.
 Note: Steel prices are subject to change without notice. Unit price quotes are guaranteed only when a PO and deposit have been received. Written or verbal quotes expire after 15 days. Request re-quote before ordering.

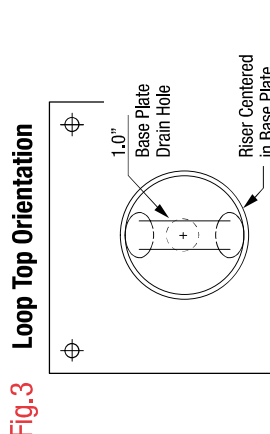
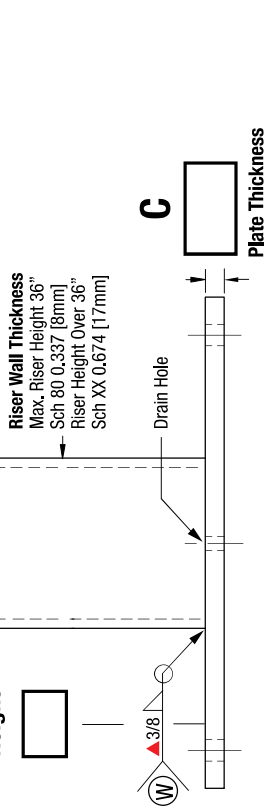
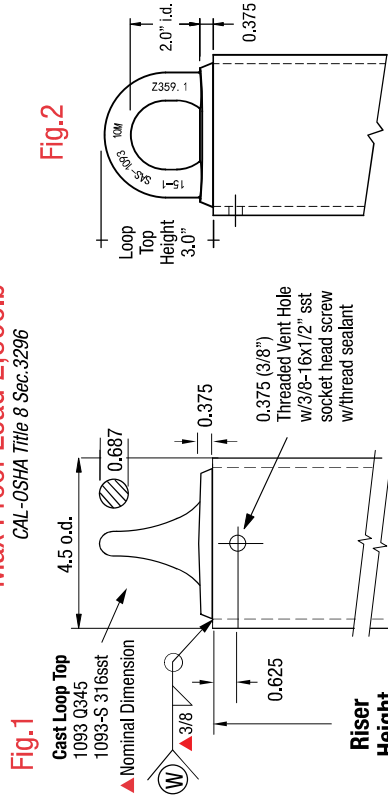


Fig. 1
Cast Loop Top
 1093 Q345
 1093-S 316sst
 ▲ Nominal Dimension

Fig. 2
 Loop Top Height 3.0"
 2.0" i.d.
 0.375

Fig. 3
 Loop Top Orientation
 1.0" Base Plate Drain Hole
 Riser Centered in Base Plate

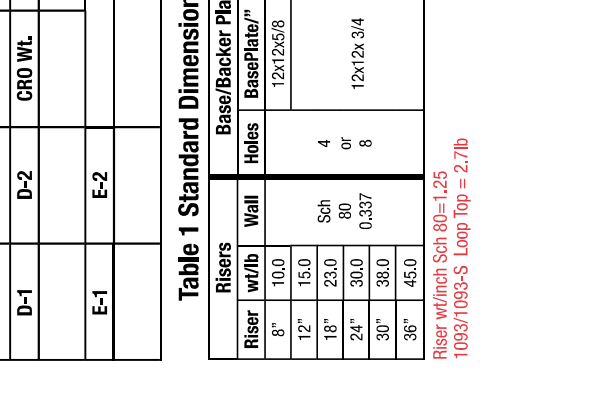
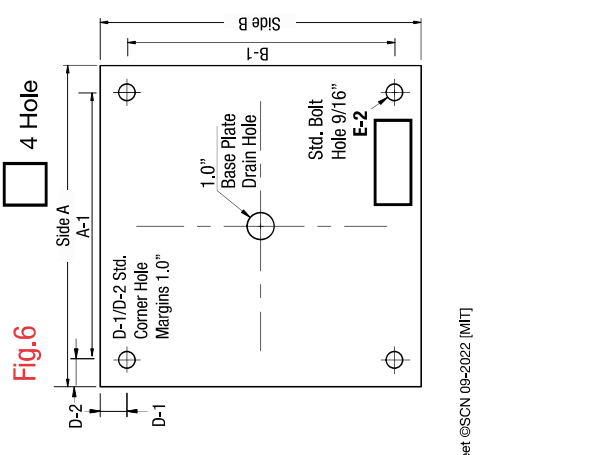
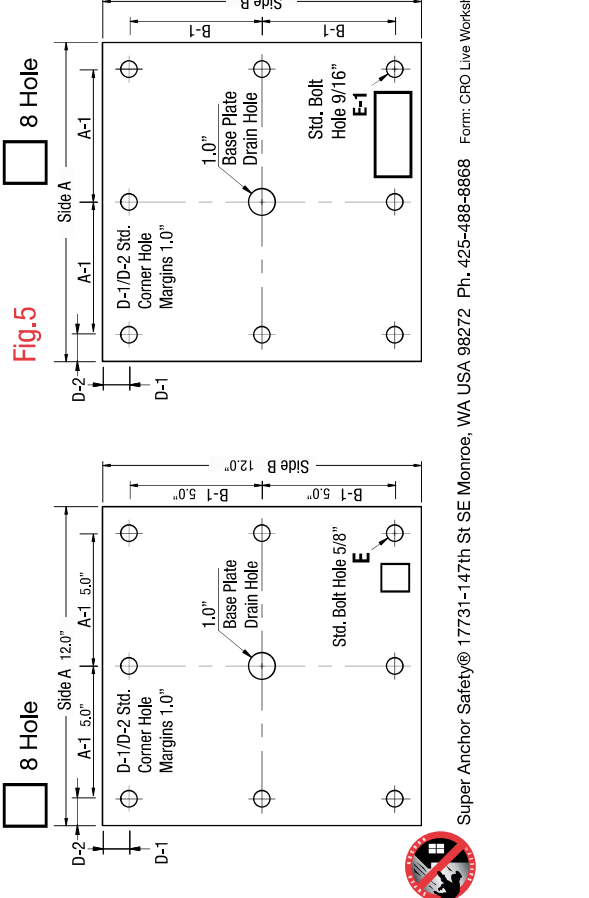


Fig. 4
Standard Base Plate 12" x 12"
 See Table 1 for Base Plate Thickness

Fig. 5
Custom Base Plate

Fig. 6
 4 Hole

Part No.: 1400-X **Index Pg.8**
Part Name: CRO Anchor **Date:** _____
Project Name: _____ **By:** _____
Contractor: _____
Address: _____

No. _____ **No.** _____ **Lead Time** _____
CRO _____ **Backer Plates** _____

Riser/Base Plate Material Specifications

Riser HT. Sch 80 0.337 Sch XX 0.674 Foam Filled No Foam HDG Finish 304 sst

Loop Top Type 1093-S 316 sst Std. 8 Hole 8 Hole 4 Hole Q345

Backer Plate Raw Backer 304sst Backer Imported Steel Certified A-36 Steel 97% USA Mfg. HDG Backer

Backer plate to match base plate dimension and bolt hole type

Base / Backer Plate Dimensions/Inches

A	A-1	B	B-1	C Thickness
D-1	D-2	CRO Wt.	Backer Wt.	E 5/8"
E-1	E-2			

Table 1 Standard Dimensions

Riser wt/lb	Wall	Base/Backer Plates	
		Holes	Base/Backer Plates wt/lb
8"	10.0	12x12x5/8	25
12"	15.0		
18"	23.0	Sch 80	
24"	30.0	0.337	
30"	38.0	12x12x 3/4	31
36"	45.0		

Riser wt/inch Sch 80=1.25
 1093/1093-S Loop Top = 2.7lb