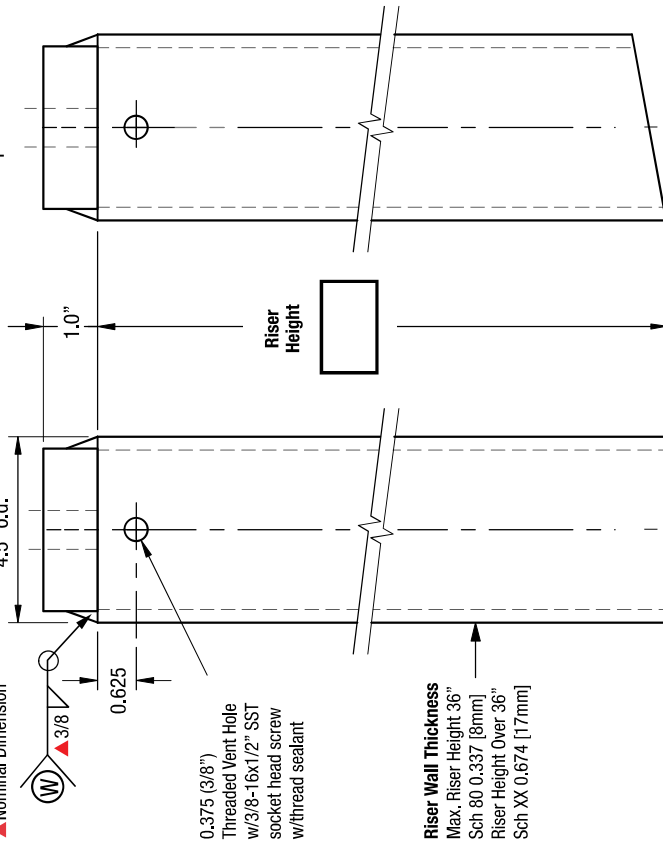


# CRR-TR /CRRS-TR Field Weld/Sloped Riser

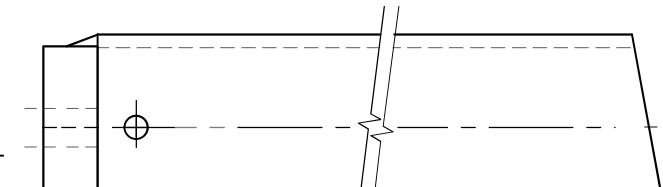
**CAL-OSHA Compliant**  
5,000lb Min. Tensile Strength  
Max Proof Load 2,500lb  
CAL-OSHA Title 8 Sec. 3296

**Fig.1**  
CRR-TR

**Threaded Cap**  
▲ TRC-4.5S Q235  
▲ TRC-4.5S 304sst  
▲ Nominal Dimension



**Fig.2**  
CRRS-TR  
Sloped Riser



**Table 1: Slope**

Pitch	Degree
1/12	4.5
2/12	9.5
3/12	14
4/12	18.5
5/12	22.5
6/12	26.5
7/12	30.5
8/12	33.75
9/12	37
10/12	40
11/12	42.5
12/12	45

← Slope

Pitch

Degree

Imported Steel  Certified A-36 Steel  97% USA Mfg.

TRC-4.5  TRC-4.5S  F diam.

▲ Q235  304sst

▲ Imported riser cap

Riser wt/mch Sch 80=1.25  
TRC 4.5 Riser Cap = 3.8lb

Riser HT.  Sch 80 0.337  Sch XX 0.674  HDG Finish  304 sst

No.  No.  CRRS-TR  Lead Time

CRR-TR

Part No.: 1492-X Index Pg.9

Part Name: CRR-TR  CRRS-TR  Date:

Project Name:  By:

Contractor:

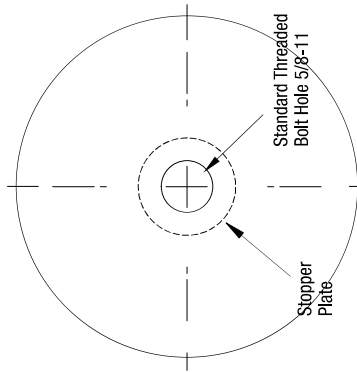
Address:

## Riser Material Specifications

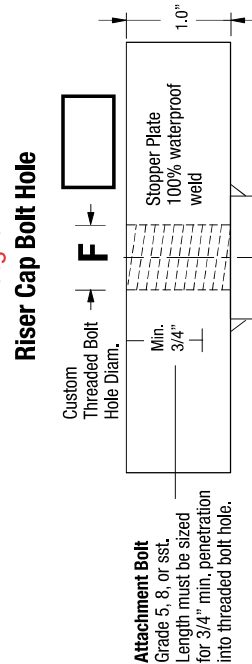
### Riser Cap

### Custom Bolt Hole

**Fig.3**  
Threaded Riser Cap



**Fig.4**  
Riser Cap Bolt Hole



## Sign-Off Required to Order

**Terms:**  
Anchors specified on this plan are custom mfg. and are not returnable after fabrication has been authorized by the customers purchase order. A 50% deposit or house credit account is required to begin fabrication and the balance paid upon completion or credit terms.

**Authorization for Fabrication**  
I accept the fabrication specifications, number of units required, project name or customers name, are correct as shown on this plan.

Print Name  Date:

Sign Name

**Expires in 30 days from date of customers PO.**  
Instructions: Sign authorization and include company or dealers purchase order.  
Note: Steel prices are subject to change without notice. Unit price quotes are guaranteed only when a PO and deposit have been received. Written or verbal quotes expire after 15 days. Request re-quote before ordering.

