

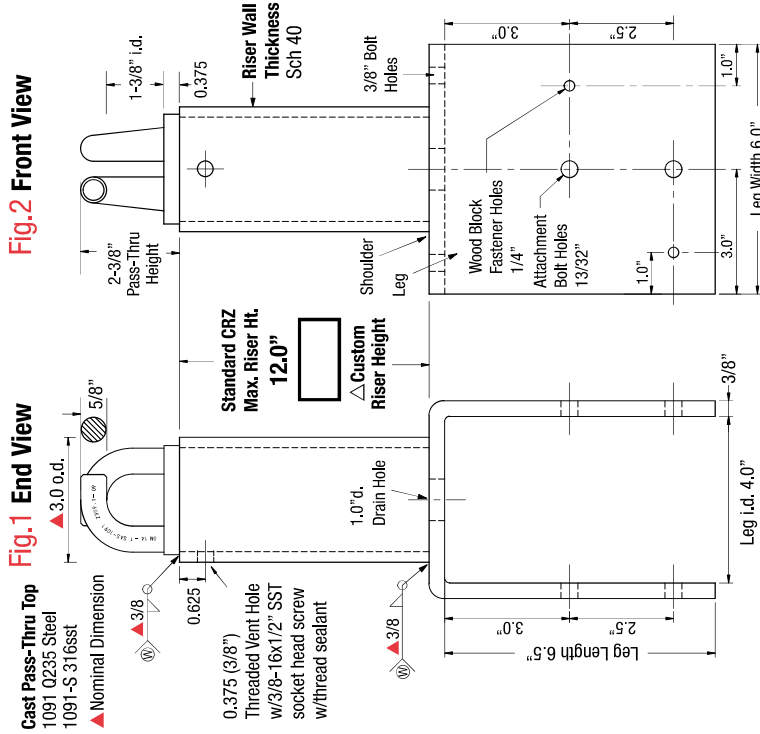
CRZ Pass-Thru Intermediate HLL Anchor Only

5,000lb Min. Tensile Strength
DO NOT PROOF LOAD

Part No.:	1126-PX		Index Pg.6
Part Name:	CRZ-AP <input type="checkbox"/>	CRZ-BP <input type="checkbox"/>	Date:
Project Name:			By:
Contractor:			
Address:			
No. CRZ-A	No. CRZ-B	Lead Time	

CRZ-AP Standard Base Plate

Fig.1 End View



CRZ-BP Standard Base Plate

Fig.4 End View

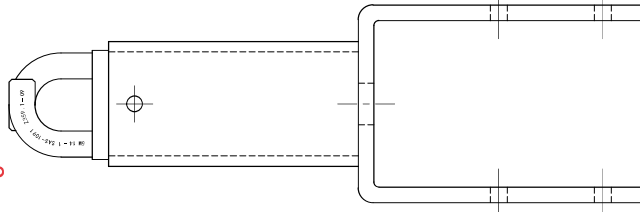
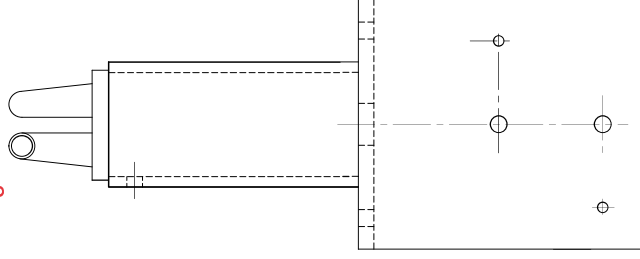


Fig.5 Front View



Anchor Material Specifications

Riser Ht. Sch 40 Foam Filled No. HDG. Finish 304 sst

Pass-Thru Top Type

1091 1091-S **A** **B**
 Q235 316sst **Figs.1,2,3** **Figs.4,5,6**

Orientation

Imported Steel Certified A-36 Steel 97% USA Mfg.

Weight

12" Riser 18lb

Riser w/finch: Sch 40=0.487
 Base Plate: 11lb
 1091/1091-S Pass-Thru Top = 1lb

Loop Top A/B Orientation

Standard CRZ's are specified for Z-Purlins running parallel with the ridge/perpendicular to the slope. require 3rd party structural analysis

Sign-Off Required to Order

Terms:

Anchors specified on this plan are custom mfg. and are not returnable after fabrication has been authorized by the customers purchase order. A 50% deposit or house credit account is required to begin fabrication and the balance paid upon completion or credit terms.

Authorization for Fabrication

I accept the fabrication specifications, number of units required, project name or customers name, are correct as shown on this plan.

Print Name _____ Date: _____

Sign Name _____

Expires in 30 days from date of customers PO.

Instructions: Sign authorization and include company or dealers purchase order.
 Note: Steel prices are subject to change without notice. Unit price quotes are guaranteed only when a PO and deposit have been received. Written or verbal quotes expire after 15 days. Request re-quote before ordering.

Pass-Thru Top Orientation B

Slope

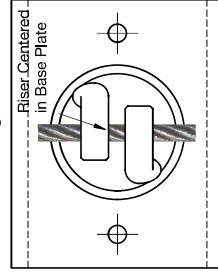


Fig.6 CRZ-BP Perpendicular to Ridge

• CRZ-BP: Use for intermediate anchor w/HLL running perpendicular to the ridge

Pass-Thru Top Orientation A

Slope

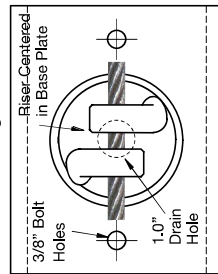


Fig.3 CRZ-AP Parallel to Ridge

• CRZ-AP: Use for intermediate anchor w/HLL running parallel with the ridge

