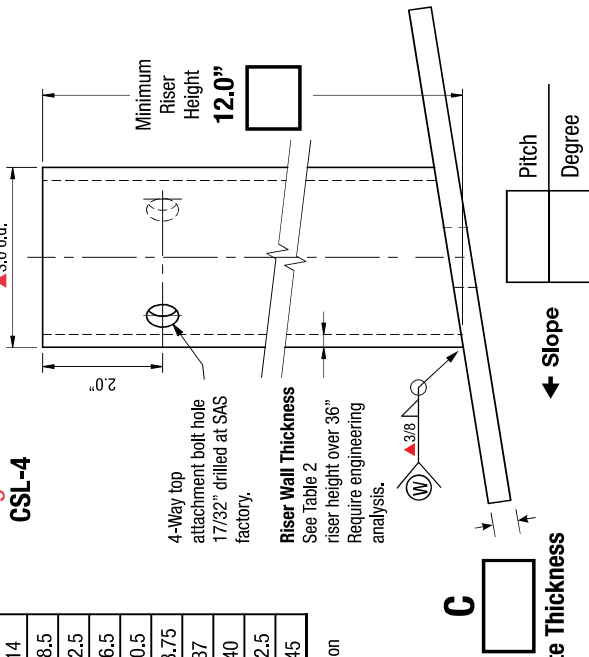


**5,000lb Min. Tensile Strength**  
**Max Proof Load 2,500lb**  
 CRA-4 must be bolt attached, field welded or concrete embedded

**Fig.1**  
**CSL-4**



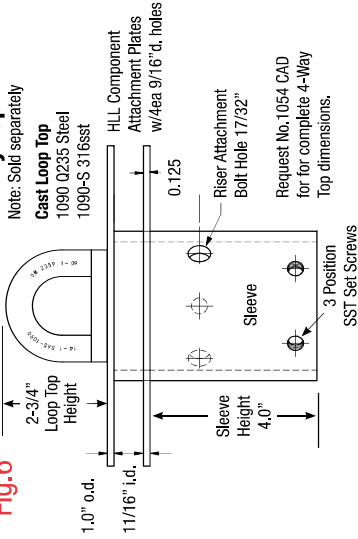
**Table 1: Slope**

Pitch	Degree	
<input type="radio"/>	1/12	4.5
<input type="radio"/>	2/12	9.5
<input type="radio"/>	3/12	14
<input type="radio"/>	4/12	18.5
<input type="radio"/>	5/12	22.5
<input type="radio"/>	6/12	26.5
<input type="radio"/>	7/12	30.5
<input type="radio"/>	8/12	33.75
<input type="radio"/>	9/12	37
<input type="radio"/>	10/12	40
<input type="radio"/>	11/12	42.5
<input type="radio"/>	12/12	45

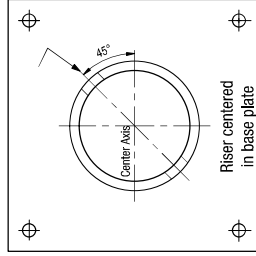
▲ Nominal Dimension

**CSL-4 Sloped Anchor**  
**HLL End/Intermediate Anchor**

**Fig.6**  
**4-Way Top**

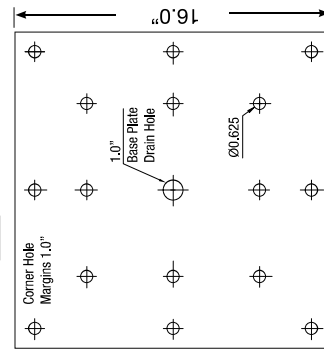


**Fig.2**  
**Riser Top View**



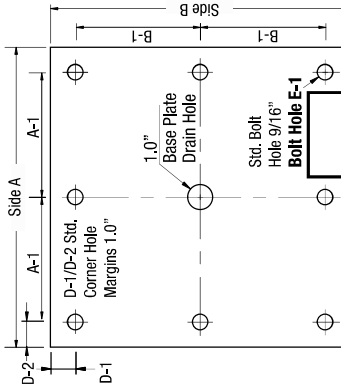
**Standard Size Base Plate**

**Fig.3**  16 Hole

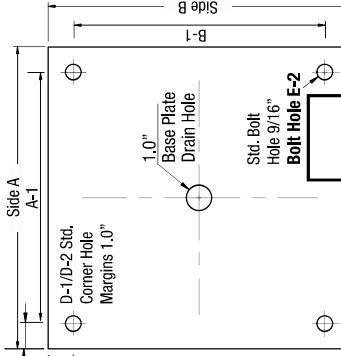


**Custom Base Plates**

**Fig.4**  8 Hole



**Fig.5**  4 Hole



**Table 2**  
**Standard Dimensions**

Riser	wt/lb	Wall	Base Min.
8"	3.9	Sch 40	3/8"
12"	5.8	Sch 40	3/8"
18"	8.8	Sch 40	3/8"
24"	17.5	Sch 80	5/8"
30"	22.0	Sch 80	3/4"
36"	26.0	Sch 80	3/4"

Base/Backer Plates	wt/lb	
Holes	Base Plate/"	
16	16x16x5/8"	46
4 or 8	12x12x5/8"	25
	12x12x 3/4	31

Riser wt/mch: Sch 40=0.487  
 Sch 80=0.730

Part No.: **1032-4X** Index Pg.3

Part Name: **CSL-4** Date:

Project Name: By:

Contractor:

Address:

No.  No.  Lead Time

CSL-4 Backer Plates

**Anchor/4-Way Top Material Specifications**

Riser Sch 40  Sch 80  Foam Filled  No Foam  HDG Finish  304 sst

HLL 0.203  0.276

**4-Way Top**

1054  1054-S  16 Hole  8 Hole  4 Hole  Degree

HDG  304sst  Imported Steel  Certified A-36 Steel  97% USA Mfg.

4-Way tops are imported.

**Backer Plate**

HDG Backer  Raw Backer  304sst Backer  Imported Steel  Certified A-36 Steel  97% USA Mfg.

Backer Plate must match base plate dimensions and bolt type.

**Base/Backer Plate Dimensions/Inches**

A	A-1	B	B-1	C Thickness
D-1	D-2	CSL-4 Wt.	Backer Wt.	4-Way Top
E-1	E-2	Riser over 36"		7.0 lb

**Terms:**  
 Anchors specified on this plan are custom mfg. and are not returnable after fabrication has been authorized by the customers purchase order. A 50% deposit or house credit account is required to begin fabrication and the balance paid upon completion or credit terms.

**Authorization for Fabrication**  
 I accept the fabrication specifications, number of units required, project name or customers name, are correct as shown on this plan.

Print Name  Date:

Sign Name

**Expires in 30 days from date of customers PO.**  
 Instructions: Sign authorization and include company or dealers purchase order.  
 Note: Steel prices are subject to change without notice. Unit price quotes are guaranteed only when a PO and deposit have been received. Written or verbal quotes expire after 15 days. Request re-quote before ordering.

