

CSL-PT Pass-Thru Sloped Anchor Intermediate HLL Anchor Only 5,000lb Min. Tensile Strength DO NOT PROOF LOAD

Fig.1 CSL-AP

Pass-Thru Parallel with Ridge

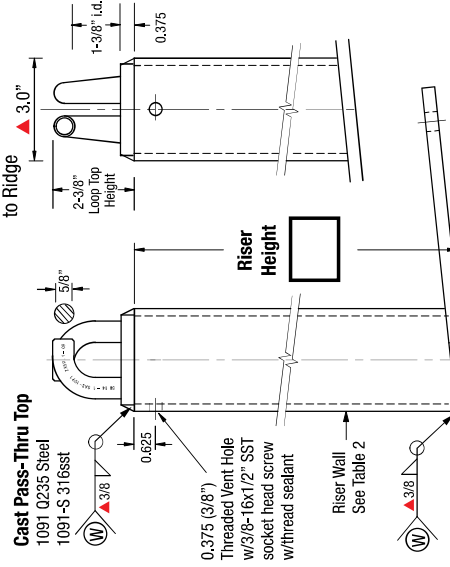


Fig.2 CSL-BP

Pass-Thru Perpendicular to Ridge

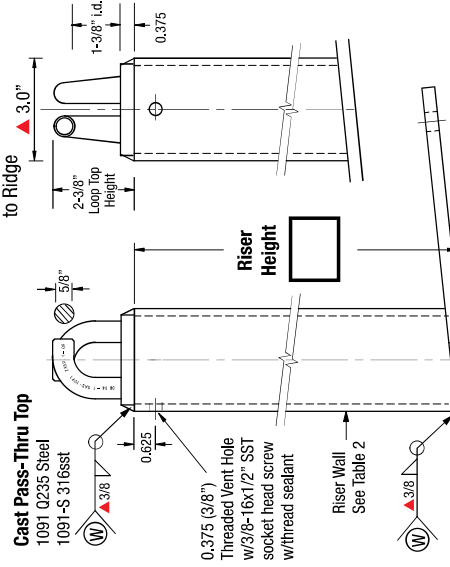


Table 1: Slope

Pitch	Degree	
<input type="checkbox"/>	1/12	4.5
<input type="checkbox"/>	2/12	9.5
<input type="checkbox"/>	3/12	14
<input type="checkbox"/>	4/12	18.5
<input type="checkbox"/>	5/12	22.5
<input type="checkbox"/>	6/12	26.5
<input type="checkbox"/>	7/12	30.5
<input type="checkbox"/>	8/12	33.75
<input type="checkbox"/>	9/12	37
<input type="checkbox"/>	10/12	40
<input type="checkbox"/>	11/12	42.5
<input type="checkbox"/>	12/12	45

▲ Nominal Dimension

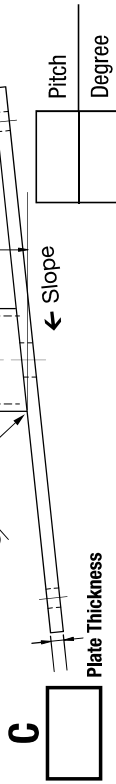


Fig.3 CSL-AP

Parallel with Ridge

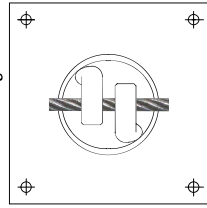
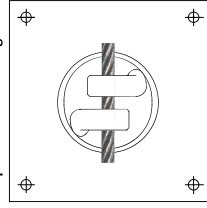


Fig.4 CSL-BP

Perpendicular to Ridge



Riser Position

Riser centered in base plate

Table 2 Standard Dimensions

Pass-Thru Risers		Base/Backer Plates	
Riser	Wall	Holes	Base/Backer Plates wt/lb
8"	3.9	52	16x16x3/8"
12"	5.8		
18"	8.8		
24"	17.5	16	16x16x5/8"
30"	22.0	4 or 8	12x12x5/8"
36"	26.0		

Riser w/inch: Sch 40=0.487 Sch 80=0.730
1091/1091-S Pass-Thru Top = 1lb

Fig.5 52 Hole

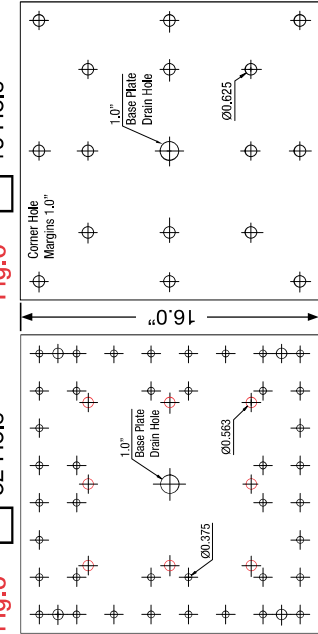


Fig.6 16 Hole

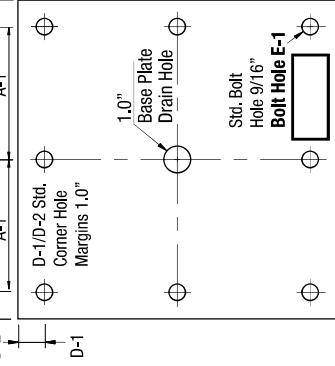


Fig.7 8 Hole

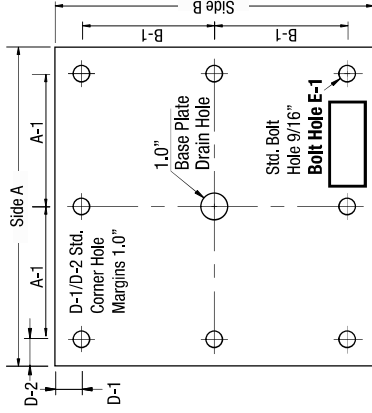
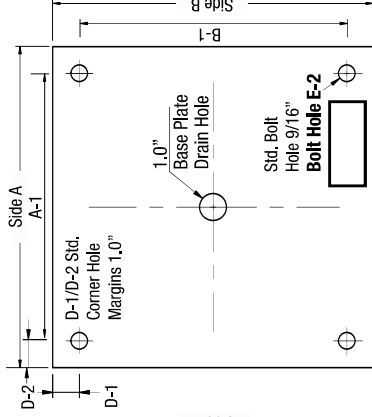


Fig.8 4 Hole



Part No.: **1031-PX**

Index Pg.3

Part Name: **CSL-AP** **CSL-BP**

Date:

Project Name:

By:

Contractor:

Address:

No. No. No.

CSL-AP CSL-BP Backer Plates

Lead Time

Riser/Base Plate Material Specifications

Riser HT. Sch 40 Sch 80 0.203 0.276 Foam No Foam HDG Finish 304 sst

Pass-Thru Type/Orientation

1091 1091-S **A** **B** **Fig.3** **Fig.4**

Pass-Thru tops are imported cast steel

Angle of Slope

Pitch Degree HDG Backer Raw Backer 304sst Backer

Backer plate to match base plate dimension and bolt hole type

Base/Backer Plate Dimensions/Inches

A	A-1	B	B-1	C
<input type="text"/>	<input type="text"/>	<input type="text"/>	<input type="text"/>	<input type="text"/>
D-1	D-2	CSL Wt.	Backer Wt.	
<input type="text"/>	<input type="text"/>	<input type="text"/>	<input type="text"/>	
E-1	E-2			
<input type="text"/>	<input type="text"/>			

Imported Steel Certified A-36 Steel 97% USA Mfg.



Super Anchor Safety®
17731-147th St SE Monroe, WA USA 98272 Ph. 425-488-8868

Form: CSL-PT Live Worksheet ©SCN 06-2022 [MIT]