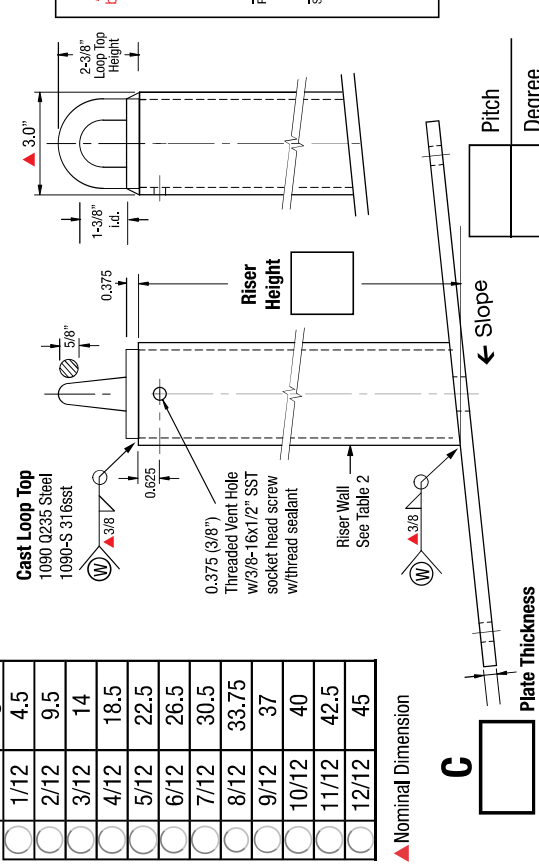


# CSL Sloped Anchor

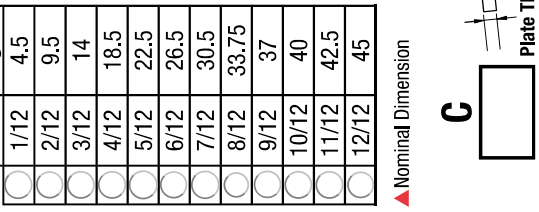
## 5,000lb Min. Tensile Strength

### Max Proof Load 2,500lb

**Fig.1 CSL-A** Loop Top Parallel with Ridge



**Fig.2 CSL-B** Loop Top Perpendicular to Ridge



**Table 1: Slope**

Pitch	Degree
1/12	4.5
2/12	9.5
3/12	14
4/12	18.5
5/12	22.5
6/12	26.5
7/12	30.5
8/12	33.75
9/12	37
10/12	40
11/12	42.5
12/12	45

**Terms:**  
Anchors specified on this plan are custom mfg. and are not returnable after fabrication has been authorized by the customers purchase order. A 50% deposit or house credit account is required to begin fabrication and the balance paid upon completion or credit terms.

**Authorization for Fabrication**  
I accept the fabrication specifications, number of units required, project name or customers name, are correct as shown on this plan.

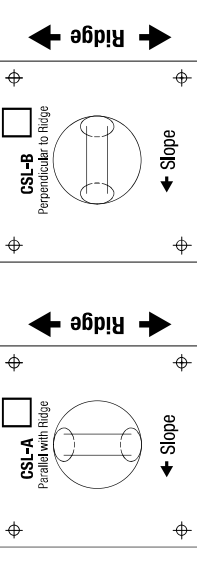
Print Name \_\_\_\_\_ Date: \_\_\_\_\_  
Sign Name \_\_\_\_\_  
**Expires in 30 days from date of customers PO.**  
Instructions: Sign authorization and include company or dealers purchase order.  
Note: Steel prices are subject to change without notice. Unit price quotes are guaranteed only when a PO and deposit have been received. Written or verbal quotes expire after 15 days. Request re-quote before ordering.

**Table 2 Standard Dimensions**

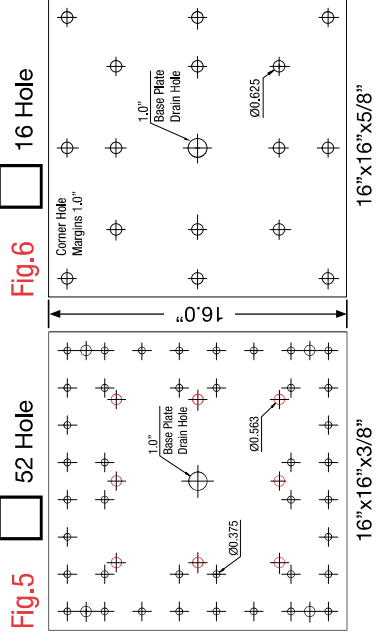
Riser	Risers		Base/Backer Plates		wt/lb
	wt/lb	Wall	Holes	Base/Plate"	
8"	3.9	Sch 40	52	16x16x3/8"	28
12"	5.8	Sch 40	16	16x16x5/8"	46
18"	8.8	Sch 80	4 or 8	12x12x5/8"	25
24"	17.5	Sch 80		12x12x3/4"	31
30"	22.0				
36"	26.0				

Riser wt/inch: Sch 40=0.487 Sch 80=0.730  
1090/1090-S Loop Top = 1lb

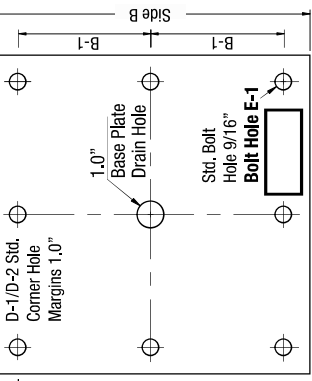
**Fig.3 Loop Top Orientation**



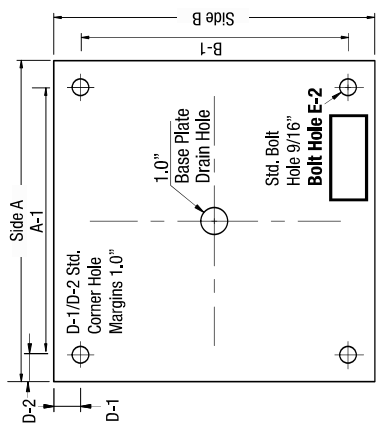
**Standard Size Base Plates**



**Fig.7**



**Fig.8**



Part No.: **1031-X** Index Pg.3

Part Name: **CSL-A**  **CSL-B**  Date: \_\_\_\_\_

Project Name: \_\_\_\_\_ By: \_\_\_\_\_

Contractor: \_\_\_\_\_

Address: \_\_\_\_\_

No.  No.  No.  Backer Plates \_\_\_\_\_ Lead Time \_\_\_\_\_

CSL-A  No.  CSL-B  No.  Backer Plates \_\_\_\_\_

**Riser/Base Plate Material Specifications**

Riser  Sch 40  Sch 80  Foam  No  HDG  304 sst

HT.  0.203  0.276  Filled  Foam  Finish

**Loop Top Type/Orientation**

1090  1090-S  **A**  **B**  **Fig.3**  **Fig.4**

316sst  52 Hole  16 Hole  8 Hole  4 Hole

Loop tops are imported cast steel

**Angle of Slope**

Pitch  Degree   HDG Backer  Raw Backer  304sst Backer

Backer plate to match base plate dimension and bolt hole type

**Base/Backer Plate Dimensions/Inches**

A	A-1	B	B-1	C
D-1			CSL Wt.	Backer Wt.
E-1				
E-2				

Imported Steel  Certified A-36 Steel  97% USA Mfg.

