

CTT-SL Sloped Threaded Riser Anchor 5,000lb Min. Tensile Strength Max Proof Load 2,500lb

Part No.:	1480-X	Index Pg.4
Part Name:	CTT-SL	Date:
Project Name:		By:
Contractor:		
Address:		
No. CTT-SL	No. Backer Plates	Lead Time

Terms:
Anchors specified on this plan are custom mfg. and are not returnable after fabrication has been authorized by the customers purchase order. A 50% deposit or house credit account is required to begin fabrication and the balance paid upon completion or credit terms.

Authorization for Fabrication
I accept the fabrication specifications, number of units required, project name or customers name, are correct as shown on this plan.

Print Name _____ Date: _____
Sign Name _____

Expires in 30 days from date of customers PO.
Instructions: Sign authorization and include company or dealers purchase order.
Note: Steel prices are subject to change without notice. Unit price quotes are guaranteed only when a PO and deposit have been received. Written or verbal quotes expire after 15 days. Request re-quote before ordering.

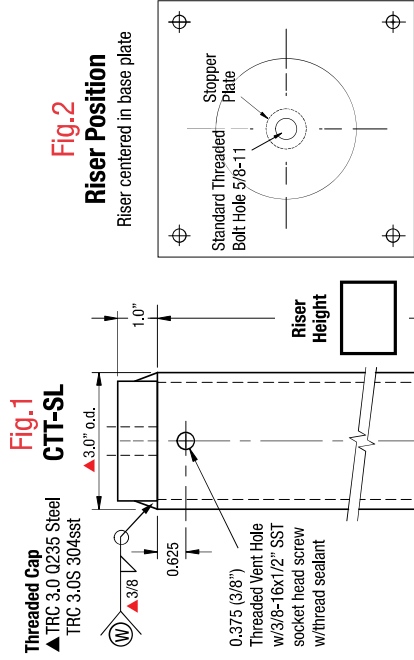


Table 1: Slope

Pitch	Degree
1/12	4.5
2/12	9.5
3/12	14
4/12	18.5
5/12	22.5
6/12	26.5
7/12	30.5
8/12	33.75
9/12	37
10/12	40
11/12	42.5
12/12	45

▲ Nominal Dimension

Attachment Bolt
Grade 5, 8, or sst.
Length must be sized for 3/4" min. penetration into threaded bolt hole.

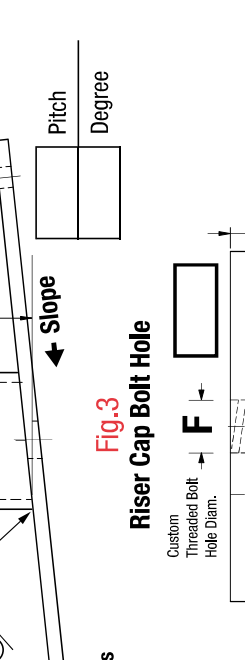
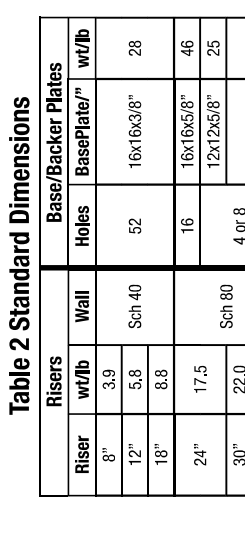
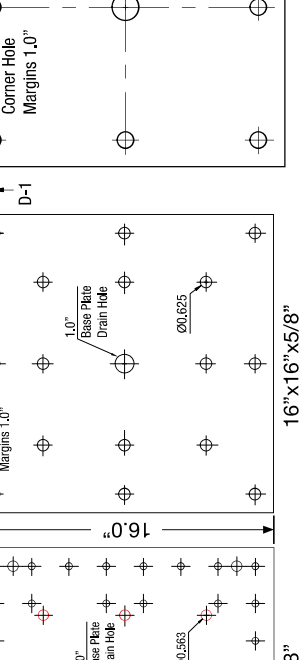
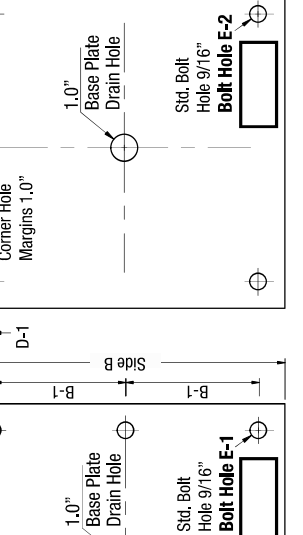
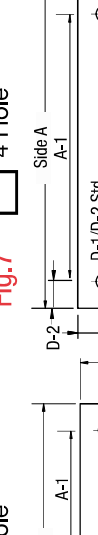
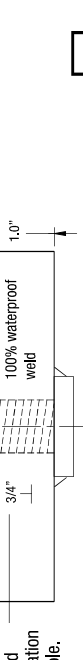


Table 2 Standard Dimensions

Risers	wt/lb	Wall	Holes	Base/Backer Plates	wt/lb
8"	3.9	Sch 40	52	16x16x3/8"	28
12"	5.8	Sch 40	16	16x16x5/8"	46
18"	8.8	Sch 80	4 or 8	12x12x5/8"	25
24"	17.5	Sch 80		12x12x 3/4"	31
30"	22.0				
36"	26.0				

Riser wt/inch: Sch 40=0.487 Sch 80=0.730
Riser Cap = 3.8lb



Imported Steel Certified A-36 Steel 97% USA Mfg.

