

- Threaded Cap
 - ▲ TRC 3.0 Q235 Steel
 - TRC 3.0S 304sst
 - ▲ Nominal Dimension

Fig.1
CTT

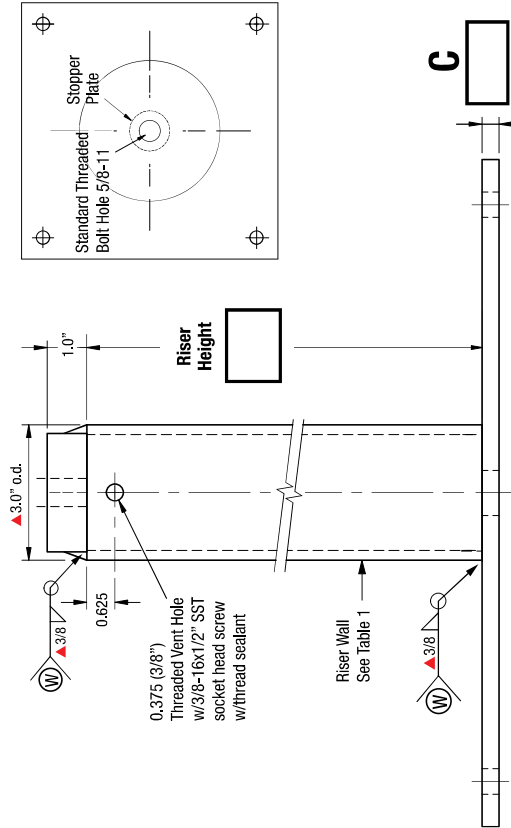
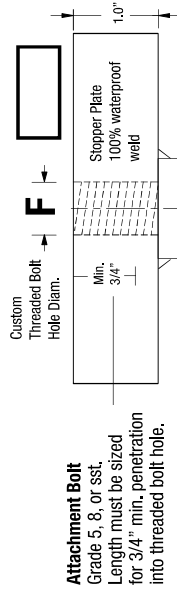


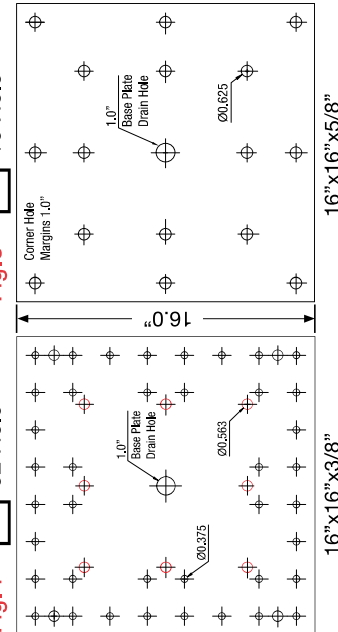
Fig.3
Riser Cap Bolt Hole



Attachment Bolt
Grade 5, 8, or sst.
Length must be sized for 3/4" min. penetration into threaded bolt hole.

Standard Size Base Plates

Fig.4 52 Hole **Fig.5** 16 Hole



CTT

Threaded Riser Anchor

5,000lb Min. Tensile Strength

Max Proof Load 2,500lb

Terms:
Anchors specified on this plan are custom mfg. and are not returnable after fabrication has been authorized by the customers purchase order. A 50% deposit or house credit account is required to begin fabrication and the balance paid upon completion or credit terms.

Authorization for Fabrication
I accept the fabrication specifications, number of units required, project name or customers name, are correct as shown on this plan.

Print Name _____ Date: _____

Sign Name _____

Expires in 30 days from date of customers PO.
Instructions: Sign authorization and include company or dealers purchase order.
Note: Steel prices are subject to change without notice. Unit price quotes are guaranteed only when a PO and deposit have been received. Written or verbal quotes expire after 15 days. Request re-quote before ordering.

Table 1 Standard Dimensions

Riser	Risers		Base/Backer Plates	
	wt/lb	Wall	Holes	Base/Plate ^{1/2} wt/lb
8"	3.9	Sch 40	52	16x16x3/8" 28
12"	5.8	Sch 40		
18"	8.8	Sch 40		
24"	17.5	Sch 80	16	16x16x5/8" 46
30"	22.0	Sch 80	4 or	12x12x5/8" 25
36"	26.0	Sch 80	8	12x12x 3/4" 31

Riser wt/inch: Sch 40=0.487 Sch 80=0.730

Riser Cap = 3.8lb

Fig.6 8 Hole

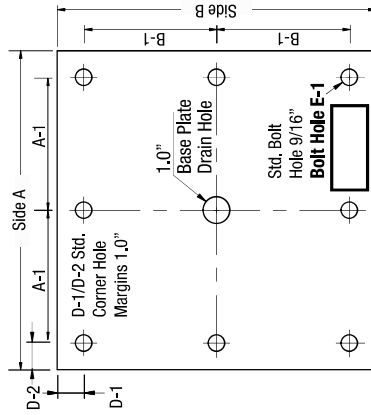
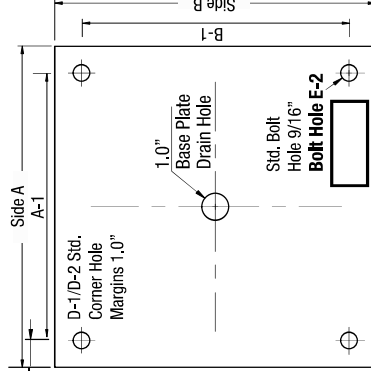


Fig.7 4 Hole



Part No.: **1480-X** Index Pg.4

Part Name: **CTT** Date: _____

Project Name: _____ By: _____

Contractor: _____

Address: _____

No. _____ No. _____ Lead Time _____

CTT _____ Backer Plates _____

Anchor Material Specifications

Riser HT. Sch 40 0.203 Sch 80 0.276 Foam Filled No Foam HDG Finish 304 sst 304 sst

Riser Cap

TRC-3.0 304sst Imported 52 Hole 16 Hole 8 Hole 4 Hole

Backer Plate

HDG Backer Raw Backer 304sst Backer Imported Steel Certified A-36 Steel 97% USA Mfg.

Backer plate to match base plate dimension and bolt hole type

Base/Backer Plate Dimensions/Inches

A	A-1	B	B-1	C Thickness
D-1	D-2	F-diam.	CTT Wt.	Backer Wt.
E-1	E-2			

