

RLT Field Weld Riser

RST Sloped Riser

5,000lb Min. Tensile Strength
Max Proof Load 2,500lb

Fig.1 RLT RST Sloped Riser

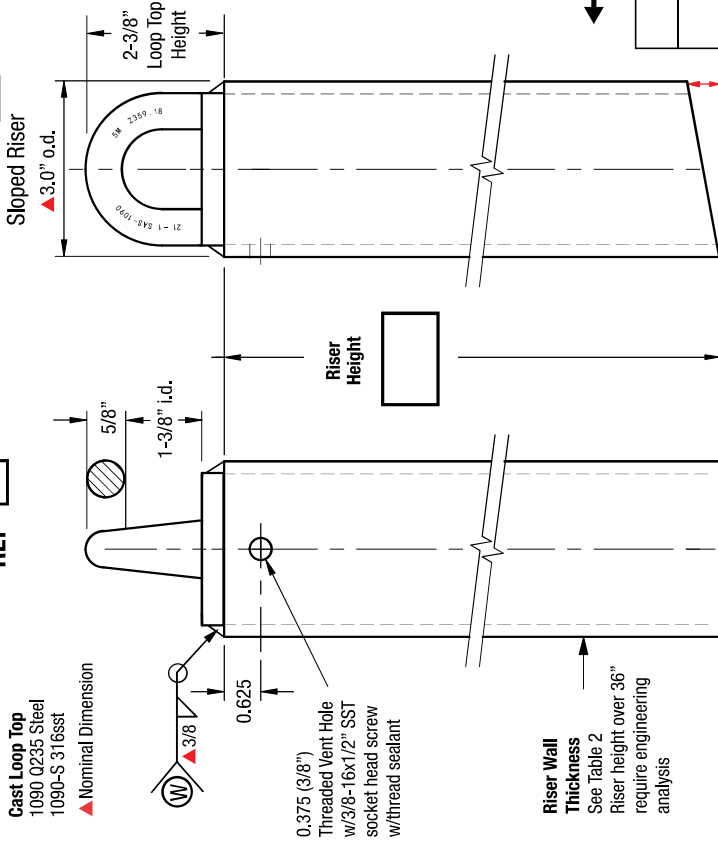


Table 1: Slope

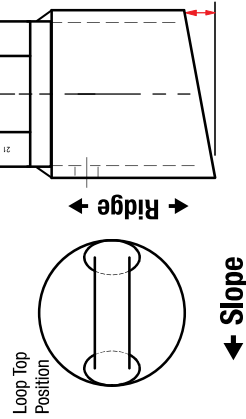
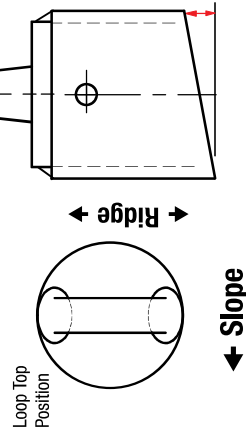
Pitch	Degree	
<input type="radio"/>	1/12	4.5
<input type="radio"/>	2/12	9.5
<input type="radio"/>	3/12	14
<input type="radio"/>	4/12	18.5
<input type="radio"/>	5/12	22.5
<input type="radio"/>	6/12	26.5
<input type="radio"/>	7/12	30.5
<input type="radio"/>	8/12	33.75
<input type="radio"/>	9/12	37
<input type="radio"/>	10/12	40
<input type="radio"/>	11/12	42.5
<input type="radio"/>	12/12	45

Table 2: Standard Dimensions

Riser	wt/lb	Wall
8"	3.9	Sch 40
12"	5.8	Sch 40
18"	8.8	Sch 40
24"	17.5	Sch 80
30"	22.0	Sch 80
36"	26.0	Sch 80

Riser wt/inch: Sch 40=0.487
Sch 80=0.730
1090/1090-S Loop Top = 1lb

Fig.3 RST-A RST-B Perpendicular to Ridge



Riser Material Specifications

Riser HT: Sch 40 Sch 80 HDG 304 sst 0.203 0.276 Finish

Loop Top Type

1090 1090-S RST-A RST-B Q235 316sst Fig.3 Fig.4

Loop tops are imported cast steel

Riser Angle of Slope / Est wt.

Pitch Degree Est.wt.
 Imported Steel Certified A-36 Steel 97% USA Mfg.

Sign-Off Required to Order

Terms:
 Anchors specified on this plan are custom mfg. and are not returnable after fabrication has been authorized by the customers purchase order. A 50% deposit or house credit account is required to begin fabrication and the balance paid upon completion or credit terms.

Authorization for Fabrication

I accept the fabrication specifications, number of units required, project name or customers name, are correct as shown on this plan.

Print Name _____ Date: _____

Sign Name _____

Expires in 30 days from date of customers PO.

Instructions: Sign authorization and include company or dealers purchase order.
 Note: Steel prices are subject to change without notice. Unit price quotes are guaranteed only when a PO and deposit have been received. Written or verbal quotes expire after 15 days. Request re-quote before ordering.

