

# RTT FW-Riser

# RTT-SL Sloped Riser

5,000lb Min. Tensile Strength  
Max Proof Load 2,500lb

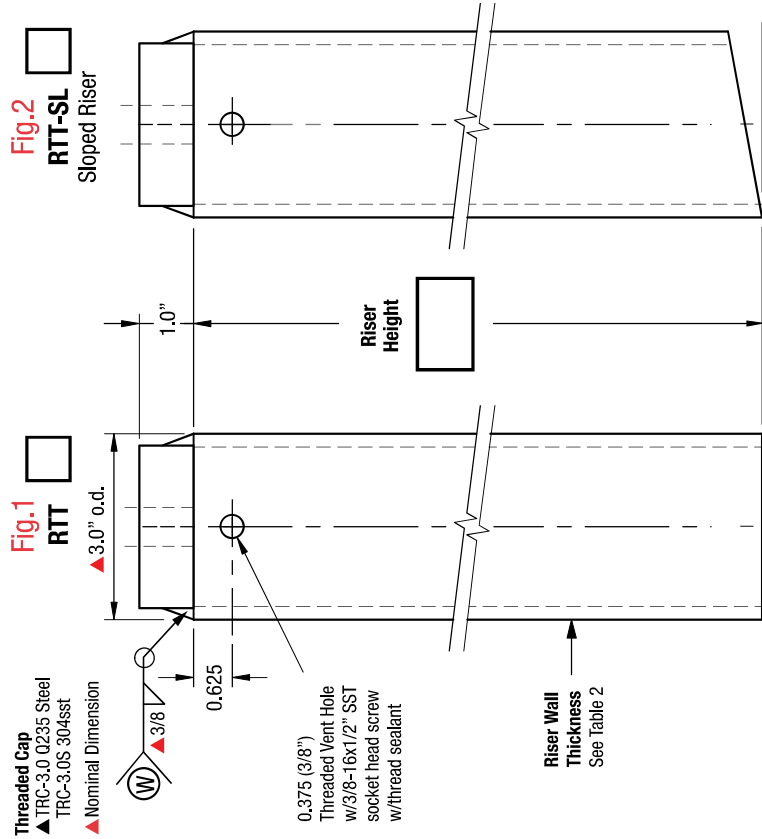


Table 1: Slope

Pitch	Degree
1/12	4.5
2/12	9.5
3/12	14
4/12	18.5
5/12	22.5
6/12	26.5
7/12	30.5
8/12	33.75
9/12	37
10/12	40
11/12	42.5
12/12	45

Table 2: Standard Dimensions

Riser	wt/lb	Wall
8"	3.9	Sch 40
12"	5.8	Sch 40
18"	8.8	Sch 40
24"	17.5	Sch 80
30"	22.0	Sch 80
36"	26.0	Sch 80

Riser wt/inch: Sch 40=0.487  
Sch 80=0.730  
TRC-3.0 Riser Cap = 1.7lb



Fig. 3  
Threaded Riser Cap

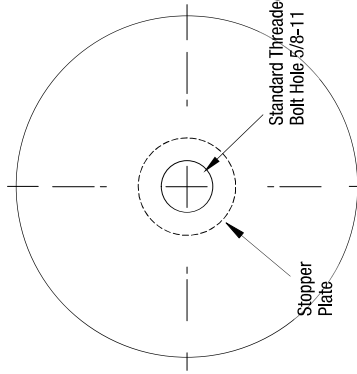
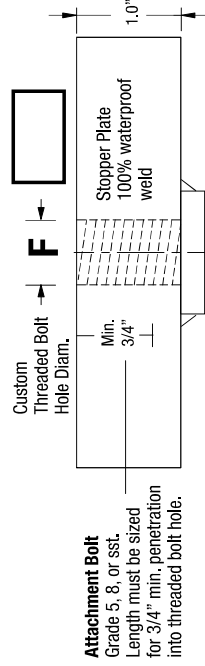


Fig. 4  
Riser Cap Bolt Hole



Part No.: **1450-X** Index Pg.4

Part Name: RTT  RTT-SL  Date: \_\_\_\_\_

Project Name: \_\_\_\_\_ By: \_\_\_\_\_

Contractor: \_\_\_\_\_

Address: \_\_\_\_\_

No.  No.  Lead Time   
RTT RTT-SL

### Riser Material Specifications

Riser HL  Sch 40  0.203  Sch 80  0.276  HDG  Finish  304 sst

### Riser Cap

TRC-3.0  TRC-3.0S  F diam.   
▲ Q235  304sst

### Custom Bolt Hole

### Riser Angle of Slope / Est wt.

Pitch  Slope  Est. wt.

Imported Steel  Certified A-36 Steel  97% USA Mfg.

### Sign-Off Required to Order

**Terms:**  
Anchors specified on this plan are custom mfg. and are not returnable after fabrication has been authorized by the customers purchase order. A 50% deposit or house credit account is required to begin fabrication and the balance paid upon completion or credit terms.

**Authorization for Fabrication**  
I accept the fabrication specifications, number of units required, project name or customers name, are correct as shown on this plan.

Print Name \_\_\_\_\_ Date: \_\_\_\_\_  
Sign Name \_\_\_\_\_

**Expires in 30 days from date of customers PO.**  
Instructions: Sign authorization and include company or dealers purchase order.  
Note: Steel prices are subject to change without notice. Unit price quotes are guaranteed only when a PO and deposit have been received. Written or verbal quotes expire after 15 days. Request re-quote before ordering.

