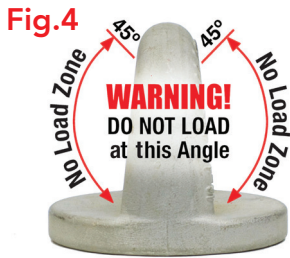
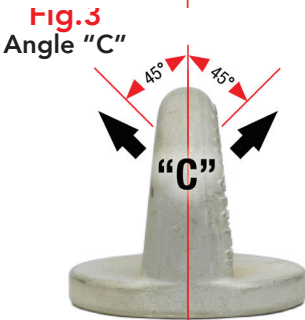
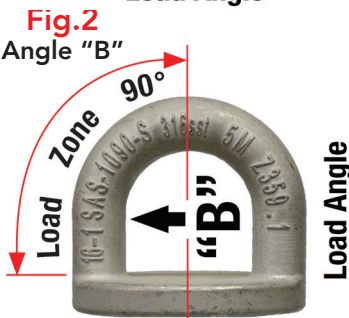
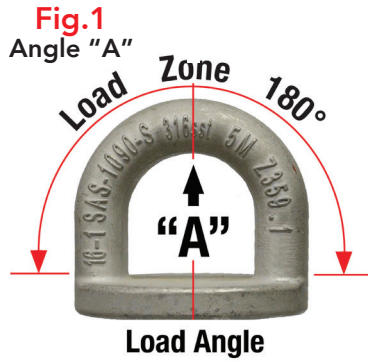


D-Plate Hoisting/Lifting Anchors



D-Plate anchors are 3rd party tested and engineered for hoisting/lifting applications.

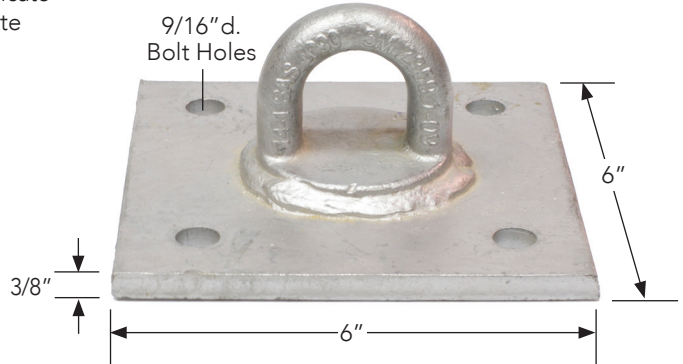
Specifications

- No.1037-G5M/S5M min. tensile strength 10,000lb
- No.1301-G10M/S10M min. tensile strength 20,000lb
- 3,600lb proof load certificate provided for each D-plate
- 6"x6"x3/8" base plate

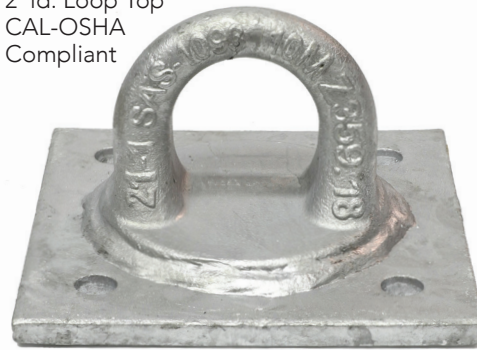
Installation

- Bolt attach w/1/2" grd. 5, 8, or 18-8sst.
- Field weld or concrete embedment

No.1037-G5M
1-3/8" id. Loop Top



No.1301-G10M
2" id. Loop Top
CAL-OSHA
Compliant



Compliance

ANSI Z359.18-17 Type A/T
CSA Z259.15:22 Type A/T
Intertek D-Plate 09-2020 test reports*
*Test equipment max. peak force 20,000lb
DH Glabe & Assoc. engineering report
Reports available on request.

Lift Hook Compatibility

Lift hook crown must rotate freely when connected to the loop top.



Table 1 Lifting Specifications

Part No	Lifting Angle/lbs		
	"A" Fig.1	"B" Fig.2	"C" Fig.3
1037-G5M	6,600	6,600	5,150
1037-S5M			
1301-G10M			6,600
1301-S10M			

Request Unit Pricing

Part Name	Part No.	Material Type	Loop Top		wt/lb
			No.	Type	
D-Plate	1037-G5M	▲ HDG	1090	Q235	4.8
	1037-S5M	▲ 304sst	1090-S	316sst	
D-Plate CAL-OSHA	1301-G10M	▲ HDG	1093	Q345	6.2
	1301-S10M	■ 304sst	1093-S	316sst	
Backer Plate	1039-R	▲ Raw Steel	N/A		3.6
	1039-G	▲ HDG			
	1039-S	■ 304sst			

■ Standard Design Custom mfg. ▲ Stock Part.

Note 1: Max. on site proof load 2,500lb.

Note 2: Backer plates may be required for installation.