

# 3-Way D-Plate/Concrete Embedment

3-Way D-Plates allow 3 workers to be attached to a single anchor point. Concrete embedment, bolt-thru or backer plate installation over steel or wood beams. Horizontal or triangle loop top alignment.

## Specification

- Min. tensile strength 5,000lb
  - No.1090 Q235 cast steel loop top
  - No.1090-S 316sst cast loop top
  - Hot dip galvanized (HDG) or 304sst
  - 3 person fall arrest/fall restraint
- 3rd party engineering by DH Glabe & Assoc.  
Report available on request

## Compliance

ANSI Z359.18-17 Type A/T  
CSA Z259.15:22 Type A/T  
OSHA 1926.502

## Attachment Bolts

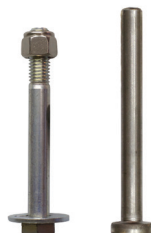
Min. 1/2" d. grd. 5  
or 18-8sst

## No.1304-G

Loop Top Triangle Alignment

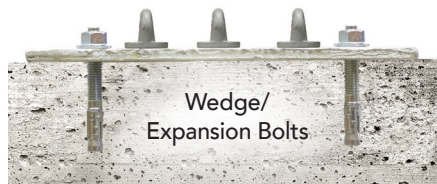


Hex Head Bolt  
w/Thick Flat Washer



Nelson Stud  
1/2" H4L

9/16" d. Bolt Holes



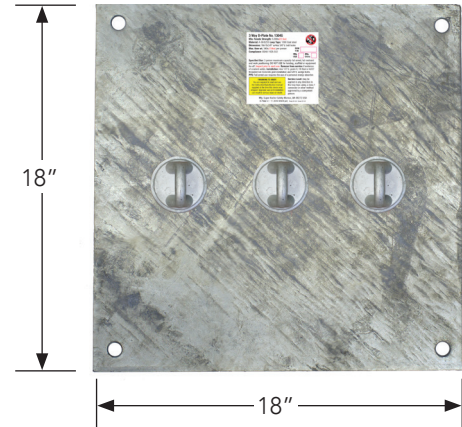
Wedge/  
Expansion Bolts



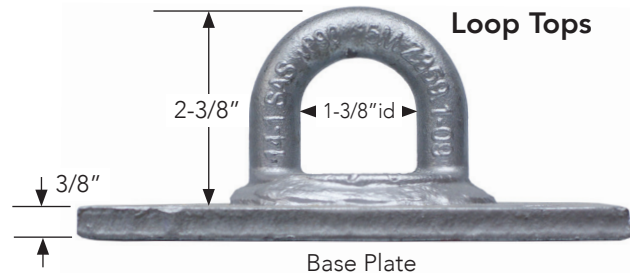
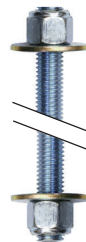
5/8"  
Expansion  
Insert  
Bolt

## No.1304-GH

Loop Top Horizontal Alignment



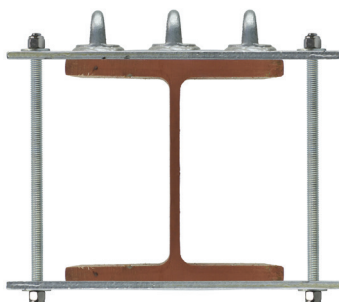
Bolt-Thru  
w/Threaded Rod



Loop Tops

Base Plate

Structural Steel  
w/Backer Plate



## Request Unit Pricing

| Part No.   | Material       | Loop Top           | Alignment  | wt/lb |
|------------|----------------|--------------------|------------|-------|
| ■ 1304-G   | HDG            | No.1090 Q235 Steel | Triangle   | 33    |
| ■ 1304-GH  |                |                    | Horizontal |       |
| ■ 1304-S   | 304sst         | No.1090-S 316sst   | Triangle   |       |
| ■ 1304-SH  |                |                    | Horizontal |       |
| ■ 1304-BPX | Δ Backer Plate |                    |            | 30    |

■ Standard design custom mfg. Note: Bolts not included.  
Δ Specify raw, HDG or 304sst when ordering.