

# Bolt-Thru Loop Top

No.1093-GB/1093-SB are specified for bolt-thru installation onto structural steel, wood framing or concrete substrates.

## Specifications

- Min. tensile strength 5,000lb
- No.1093/1093-S loop top tensile strength 20,000lb\*
- 2" id. cast steel loop top
- 1" diam. offset bolt hole
- Accepts 5/8" or 3/4" hex head bolt or threaded rod w/lock nut
- Hot dip galvanized (HDG) or 316sst
- 3rd party engineering by DH Glabe & Assoc. Report available on request

## Compliance

ANSI Z359.18-17 Type A/T\*  
 CSA Z259.15:22 Type A/T\*  
 Window Washing ANSI/IWCA I-14.1  
 OSHA 1926.502

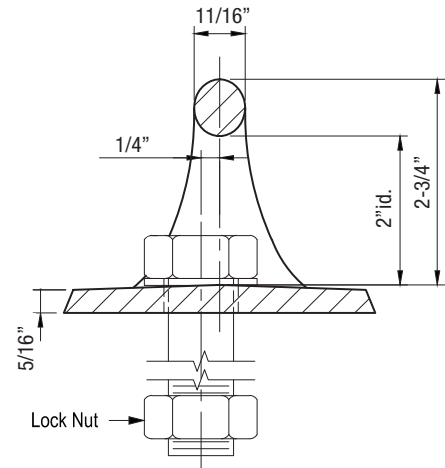
\*Request Intertek CRO Lab Report

## No.1093-GB

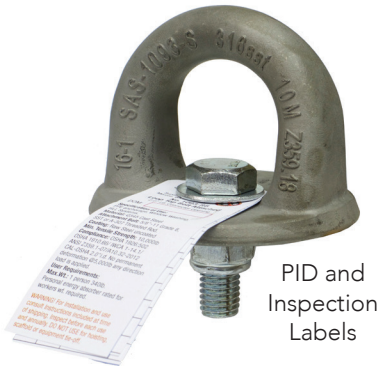
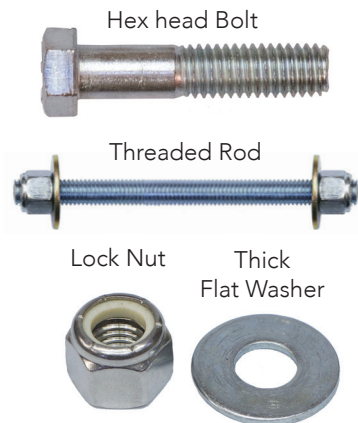
Bolt-Thru Loop Top



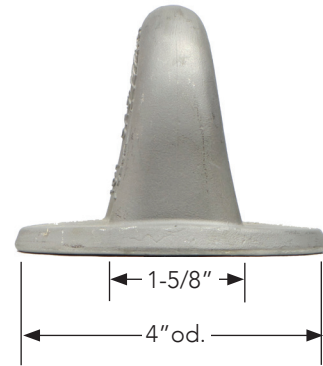
1" diam. Offset Bolt Hole



## Attachment Bolt Types



PID and Inspection Labels



## Request Unit Pricing

Part No.	Material	wt/lb
■ 1093-GB	Q345 Steel	2.5
■ 1093-SB	316sst	
■ 2002-X	Custom Bolt	

■ Project specific bolt size supplied by end user or SAS.

■ Stock Part.

## Wood Substrate



## Structural Steel

