

Stud Bolt Loop/Pass-Thru Tops

Loop and pass-thru tops with stud bolts are bolt attached to a supporting structure or used with No.1305-A /1305-B sub surface anchors and No.1309-3 receiver bolt.

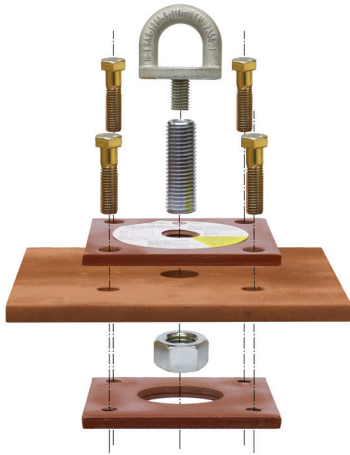
Specifications

- Min. tensile strength 5,000lb
- Single person PPE anchor
- HLL lifeline system
- Min. tensile strength 5,000lb
- Hot dip galvanized (HDG) or 316sst
- Supplied with lock nut and flat washer
- 3rd party certification reports available on request
- **Not rated for window washing anchors**

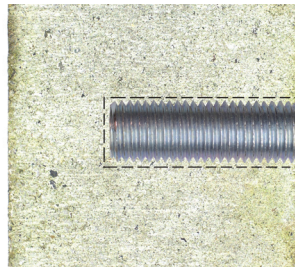
Compliance

ANSI Z359.18-17 Type A/T
 CSA Z259.15:22 Type A/T
 OSHA 1926.502

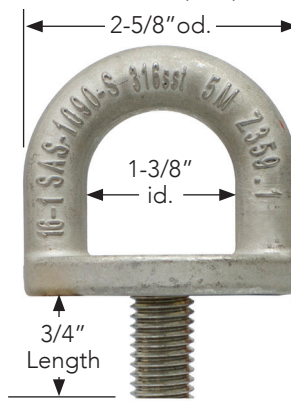
No.1305-B
 Sub-Surface Anchor



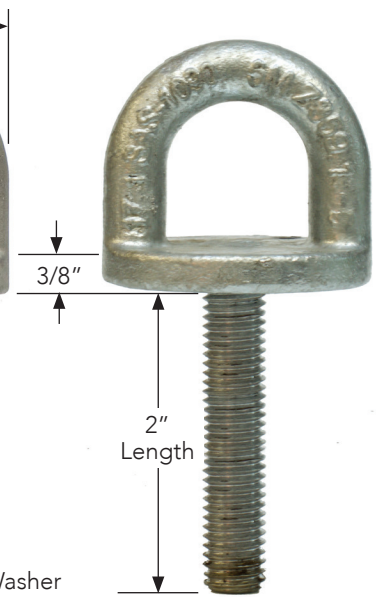
No.1309-3
 Receiver Bolt



No.1090-SSA
 316sst Loop Top



No.1090-GBS
 HDG Loop Top



All Loop and Pass-Thru Top Stud Bolts 5/8"-11 Threaded Rod

Lock Nut

Washer



Request Unit Pricing

Part No.	Material	5/8"-11 Stud Bolt		Type
■ 1090-SSG	HDG Q235	grd.5	5/8"X3/4"	Loop Top 1-3/8" id
▲ 1090-SSA	316sst	sst		
▲ 1090-GBS	HDG Q235	grd.5	5/8"X2"	Pass-Thru
▲ 1090-SBS	316sst	sst		
■ 1091-SSG	HDG Q235	grd.5	5/8"X3/4"	Pass-Thru
■ 1091-SSA	316sst	sst		
■ 1091-GBS	HDG Q235	grd.5	5/8"X2"	Loop Top 2" id.
■ 1091-SBS	316sst	sst		
■ 1093-GBS	HDG Q345	grd.5	5/8"X2"	Loop Top 2" id.
■ 1093-SBS	316sst	sst		
Custom Mfg.				
■ 1090-X	Loop Top	1-3/8" id	HDG or 316sst	Specify Stud Bolt Length
■ 1091-X	Pass-Thru			
■ 1093-X	Loop Top	2" id.		

■ Custom mfg. specify material type and 5/8"-11 stud bolt length.

■ Custom mfg. ▲ Stock Part.

Pass-Thru Top

Use only for HLL Systems



No.1093-SBS
 316sst Loop Top

