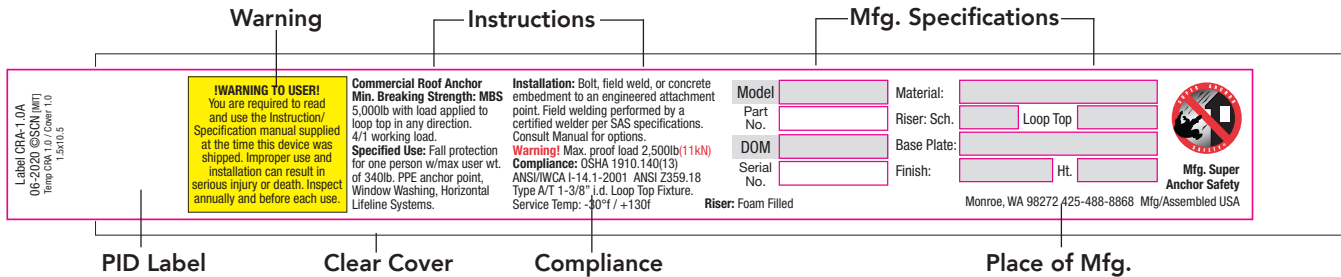


SAS Commercial Anchor Specifications

PID Labels

ANSI/CSA compliant adhesive back product id labels (PID's) specify anchor mfg. details and are factory attached with a clear cover. Replacement labels are available on request.



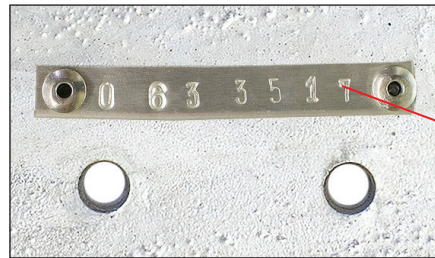
Attachment Bolts

Unless otherwise specified, all SAS supplied attachment bolts and lock nuts are 18-8sst.

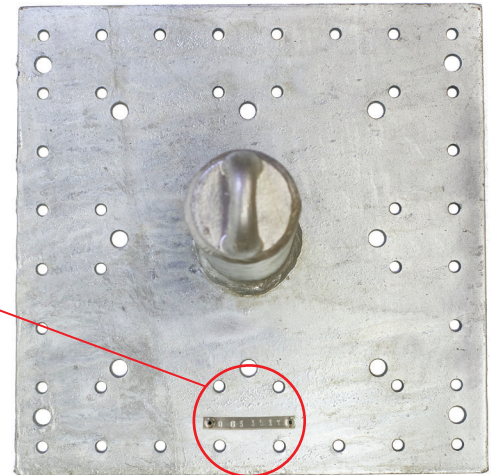


Serial No. Plate

CRA/CRA-PT imported models with base plates have factory attached serial number plates. Non-stock models display the serial number on the PID label.



Serial No. Plate



SST Vent Hole Plug

When field welded risers require foam filling, it must be applied after welding thru the removable vent hole plug.



Removable 3/8" sst Hex Socket Vent Hole Plug

RLT Field Weld Riser



Field Weld Risers

Heat sensitive PID labels and clear label covers are supplied loose for application after fielding welding.

