

# Cross-Brace

CBO No.1305-19 cross-brace is specified for wood or steel framed vertical walls or roof decks. Designed for use with SSA 1305-A, SSA 1305-B and CRA w/6"x6" base plates. Installs on 24" framing centers with hex drive WS screws. Use for single person or HLL.

## CBO No.1305-19 Cross-Brace

### Specifications

- Min. tensile strength 5,000lb
- 1/2" red oxide coated steel plate w/radius formed legs
- Attaches with WS screws
- Compatible with SAS mfg. anchors with 6"x6" base plates and SSA 1305-A/B anchors
- Fall arrest or fall restraint
- Single person and HLL systems
- 3rd party engineering by DH Glabe & Assoc. Report available on request
- Note: Steel framing requires engineering

### Compliance

ANSI Z359.18-17 Type A/T  
CSA Z259.15:22 Type A/T  
OSHA 1926.502

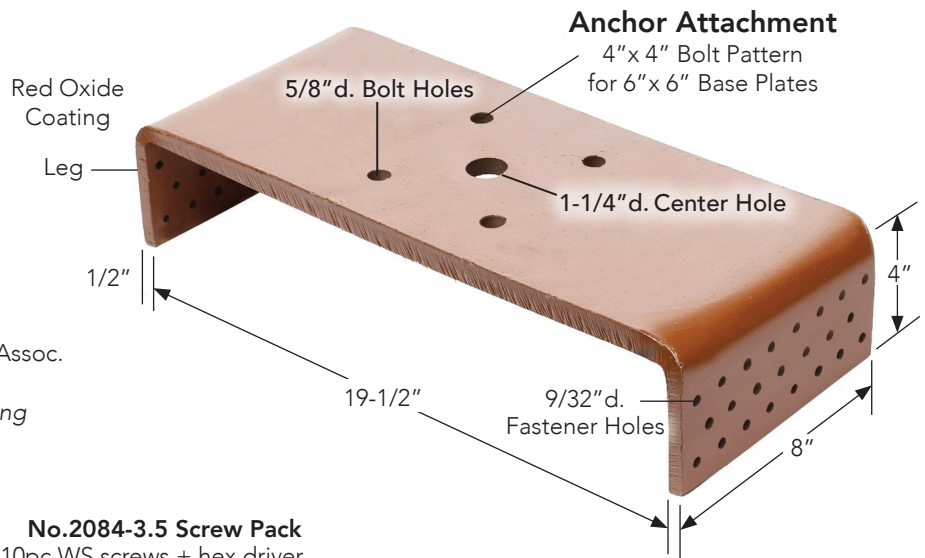
### Request Unit Pricing

Part No.	Description	wt/lb
▲ CBO 1305-19	See pkg. Contents	31

▲ Stock Part.

### CBO 1305-19 Pkg Contents

- 1ea CBO 1305-19 cross-brace
- 5ea No.2084-3.5 10pc 3-1/2" WS screws with hex driver



**No.2084-3.5 Screw Pack**  
10pc WS screws + hex driver.



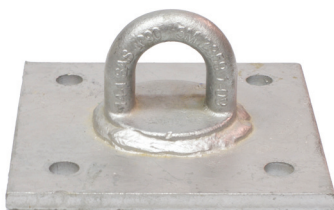
**3/8" Hex Driver Included**



## Compatible Anchor Models

### Temporary Anchors

**No.1037**  
D-Plate



**No.1028-DP6**  
Swivel-D



### Permanent Anchors

**CRA w/6"x6" Base Plate**  
Vertical Wall/Roofing Decks  
Single Person PPE/HLL System



**SSA No.1305-B**  
Sub-Surface Vertical Wall  
Single Person PPE/HLL System

