

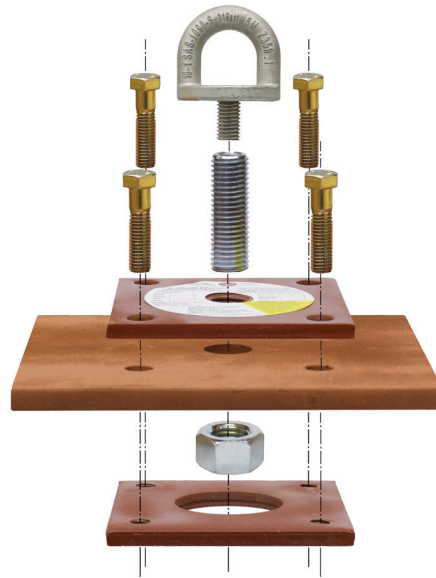
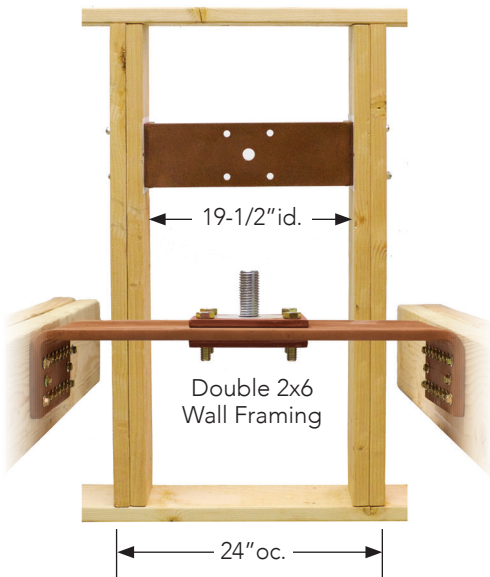
Cross-Brace Vertical Wall

CBO No.1305-19 cross-brace is specified for exterior and interior vertical walls and floors. Use with SSA 1305-B sub-surface anchor. The receiver bolt adjusts for substrate and finished surfaces up to 3" and is ideal for stucco walls or walls with exterior insulation panels. Custom length receiver bolts are available for wall thicknesses greater than 3".

CBO No.1305-19
Cross-Brace

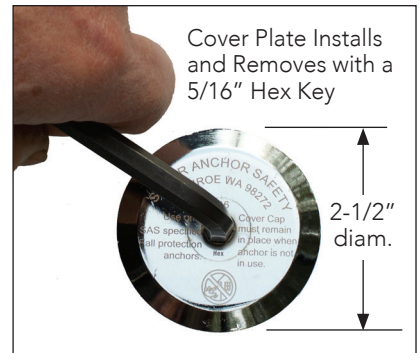
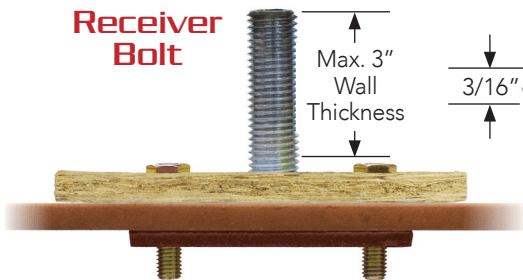
SSA No.1305-B

Exterior Wall



Receiver Bolt

Low Profile Cover Plate



Examples of Finished Surfaces



Ideal for elevator personnel performing service work. May be installed on exterior walls or inside the elevator shaft.