

3.0"od. Custom Beam Anchors

CRB model anchors are designed specifically for installation onto wood, steel beams and non-standard Z-purlins. Note that 4-Way tops are sold separately.

Top Fixtures

Loop tops are oriented for single person anchor point or HLL end anchors. Pass-thru tops are oriented for HLL direction relative to the slope/ridge.

Model Types

**No.1127-X
CRB**

HLL
End Anchor
w/Loop Top



**No.1127-PX
CRB-PT**

HLL
Intermediate Anchor
w/Pass-Thru Top



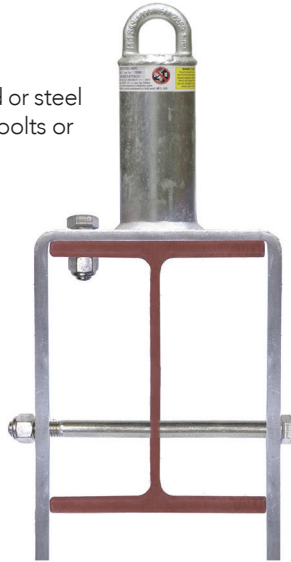
**No.1127-4X
CRB-4**

HLL Anchor
w/4-Way Top



CRB Anchors

Mfg. to fit any size wood or steel beam. Attaches with 4 bolts or field welded.



CRZ vrs CRB

CRZ and CRB have a similar model design but have different applications due to the type of supporting structure they are attached to. CRZ Z-Purlin anchors are designed for a max. riser height of 12" and have a pre-mfg. base plate that fits most standard size Z-purlins. Riser heights greater than 12" require 3rd party structural analysis. CRB models are mfg. to fit any size steel beams, wood beams and Z-purlins. Base plate dimensions and riser heights are project specific.