

# Anchor Backer Plates

## Request Unit Pricing

Part No.	Type	Model	Dimension/Inches	wt/lb
1084-BPR	▲ Raw	52 Hole	16x16x3/8	28
1084-BPG	▲ HDG			
1084-BPS	▲ 304sst			
1085-BPR	▲ Raw	16 Hole	16x16x5/8	46
1085-BPG	▲ HDG			
1085-BPS	▲ 304sst			
1409-BPR	▲ Raw	8 Hole	12x12x5/8	25
1409-BPG	■ HDG			
1409-BPS	▲ 304sst			
1410-BPR	▲ Raw		12x12x3/4	31
1410-BPG	■ HDG			
1410-BPS	■ 304sst			
1412-BPR	▲ Raw	12x12x1-1/8	46	
1412-BPG	■ HDG			
1412-BPS	■ 304sst			

■ Standard Design Custom mfg. ▲ Stock Part.

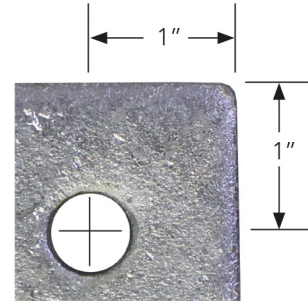
■ 7-10 day lead time for galvanizing.

Note 1: Stock plates are supplied with drain holes.

Note 2: 52 hole plates have asymmetrical corner bolt holes and must be aligned with anchor base plate.

Backer plates have identical bolt hole and plate size specifications as anchor base plates and are used where anchors cannot be attached directly to the installation surface.

## Standard Corner Holes



## Custom Models

Contact SAS sales team.

## Custom Finish

Shop primer and thermal-plastic coating.

\*Note that raw coated backer plates will have some minor surface oxidation.

## 52 Hole 16"x16"



## 16 Hole 16"x16"



Bolt Holes Min. 9/16" Max. 5/8"

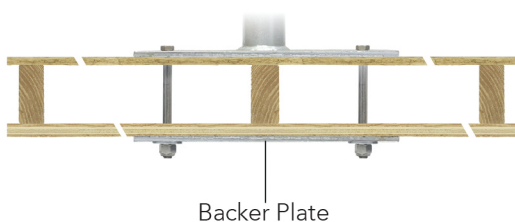
## 8 Hole 12"x12"



Bolt Holes Min. 9/16" Max. 5/8"

## Steel or Wood Beams

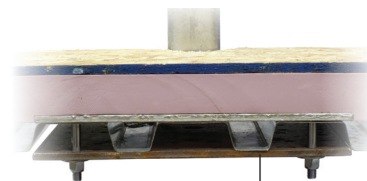
## Wood Framed Structures



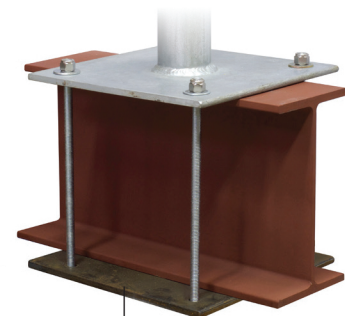
Backer Plate

## Type B Metal Decking

With or Without Insulation Panels



Backer Plate



Backer Plate