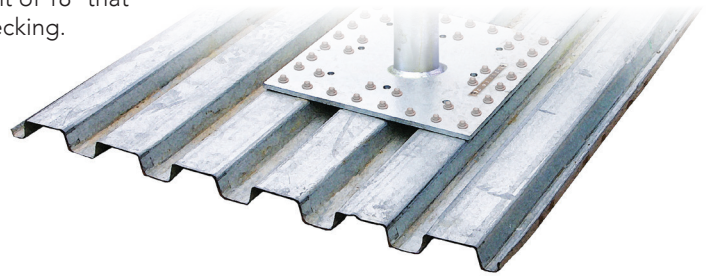


# Fasteners

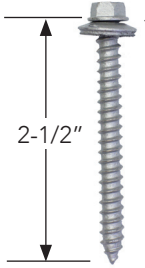
Mechanical fasteners are specified for use with commercial anchors mfg. with 52 hole base plates with a maximum riser height of 18" that are installed over a min. 3/4" plywood or type B metal decking.

## Type B Metal Decking



### No. 2022

#12-14 Hex Head Screw



5/16"  
Hex  
Drive

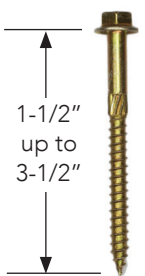


Retail  
Pkg.

Driver Tip  
Not Included

### WS Wood Screws

1/4" diam. grd. 5 Steel w/Self Drilling Tip



3/8"  
Hex  
Drive



Retail  
Pkg.



Driver Tip  
Included

### Plywood

Min. 3/4" or =



HeadLok™ Screws

Sheathing

Rigid Insulation

### HeadLok™ Screws

Installation Over Insulated Panels



### Drill Tips

GM = Wood

SP = Wood/Light ga. Metal

DP= Drill Point= Thick Metal

Type-B Metal Decking  
or min. 3/4" Wood Sheathing

### Request Unit Pricing

Part Name	Part No.	pkg.	Length	Substrate
Hex Head Screw	□ 2022	40pc	2-1/2"	Wood/Metal
WS Wood Screw	2084-1.5	25pc	1-1/2"	Wood
	2084-2.0		2"	
	2084-2.5		2-1/2"	
	2084-3.0		3"	
	2084-3.5	10pc	3-1/2"	
HeadLok	■ ▲ 2032-X	Specify at time of ordering quantity, length and drill tip		

■ Some lengths/drill tip types custom order min. 250pcs.

▲ Some lengths/drill tip types in stock available in smaller quantities.

□ Standard fastener pkg. for all anchors w/52 hole base plates w/max. riser height of 18".

### SAS Supplied Fasteners

Fasteners specified for use with SAS supplied anchors are tested and 3rd party certified to meet service load requirements.

**WARNING!** Fasteners not supplied by SAS require engineering by a qualified or competent person or 3rd party certification.

Fastener mfg. specifications and test data available on request.