



SUPER ANCHOR SAFETY®

ARS Permanent Roof Anchor Instruction Specification Manual 2025

ENGLISH
VERSION

!WARNING TO USER!

You are required to read and use the Instruction/ Specification manual supplied at the time this device was shipped. Improper use and installation can result in serious injury or death. Follow inspection requirements before each use.

Materials Specifications

Anchor: 14ga. and 11ga.430sst,
Q235 steel, 304sst or 316sst.

Coating: HDG or dacromet

Temperature Range: -30°F-120°F

Min. Breaking Strength:

5,000lb(22kN)

Max. Arrest Force: 3,600lb(16kN)

Compliance: OSHA1926.502

ANSI Z359.18-17 Type D

Meets Safety Code for use in Québec.

**Certified by a member of l'Ordre
des ingénieurs du Québec.**

SAS = Super Anchor Safety.

Qualified or Competent Person

See OSHA definition.

***EOR = Engineer of Record**

Anchor Locations/Service Zones

Required to be specified by the project EOR*
or qualified person*. See Fig.18 example.

Specification of Use

- Fall arrest or fall restraint
- 1 person w/max. body weight of 310lb including tools and equipment.
- Max. Slope 24/12
- Do not use for work positioning, HLL systems, hoisting or lifting

Framing Requirements

Install onto top chords capable of supporting 5,000lb or 2 times the
"intended fall protection load" as specified by OSHA 1926.502(d)(15)(i)(ii).

Fall Protection Load: Max. fall arrest force 1,800lb times 2 = a max.

in plane load of 3,600lb applied to a top chord or supporting structure.

Engineering is required by the project EOR* or qualified person*. Install

anchors below the hip or ridge as shown at Figs.4,5,14,18.

Attachment Bolt Specifications

Attach ARS anchors with a **SAS** factory supplied 5/16" grd 8 bolt.

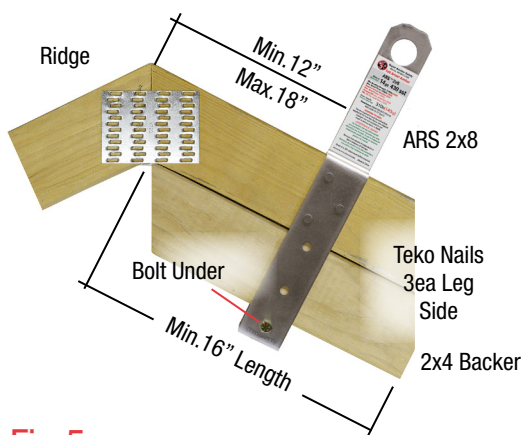
Bolt Under: See Figs.10,11.

Bolt-Thru: Drill pilot hole w/5/16" drill bit see Fig.12.

Teko Nails: Anchors mfg. with teko nail holes, install 3 nails in each leg to
prevent unwanted movement during use. See Fig.3.

See teko nail warning Fig.6.

Fig.4 2x4 Top Chord w/Backer



Top Chord Backer

A 2x4x16" length backer is
required for bolt under ARS
2x8 and ARS Type II anchors
installed onto 2x4 top chords.
Attach backer to the top
chord to prevent movement.
See Figs.4,14.

Fig.5 2x4 Top Chord

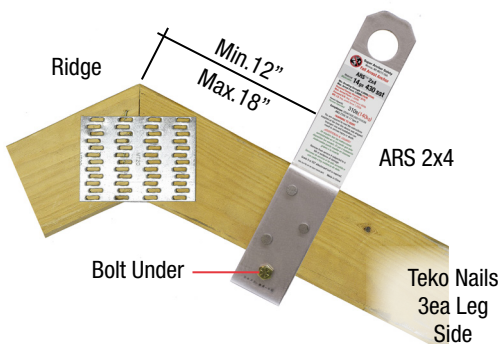


Fig.1

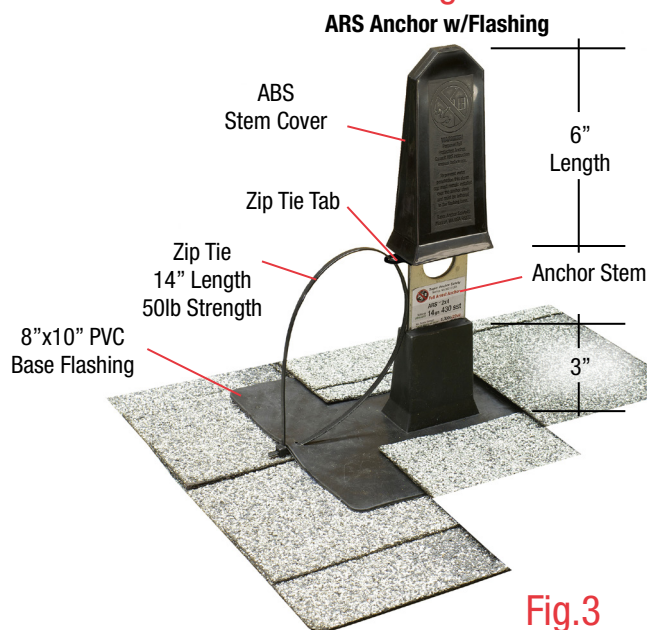


Fig.2



Fig.3

ARS 2x8

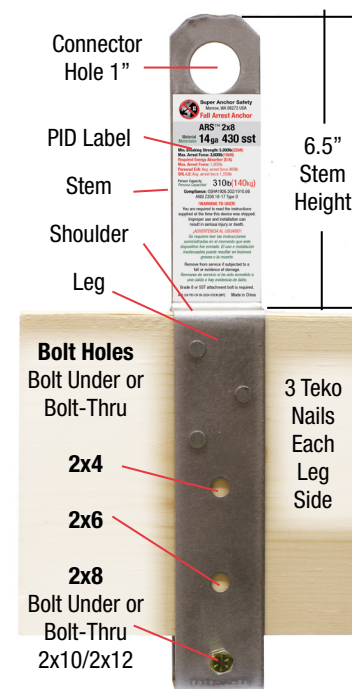


Fig.6



Teko Nail Warning

Attachment Bolt Required!

In the event of a free fall, anchors
attached only with teko nails will
not arrest a fall resulting in
serious injury or death.

Open Framing Warning!

Sheathing must be in place at
the anchor location prior to
use for fall protection. See Fig. X
Use SAS Safety Bars or TrussBars
for open framing fall protection.

Fig.7

ARS 2x8 Tile-Roof

High profile roof tiles require a longer stem height to allow the connector hole to be accessible.

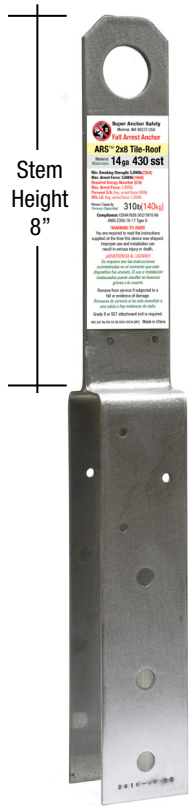


Fig.8



Fig.9 Sheathing Penetration



Do not install anchors directly over the top of the sheathing.

Fig.13 No.1068 ARS Type II



Fig.14 Top Chord Backer

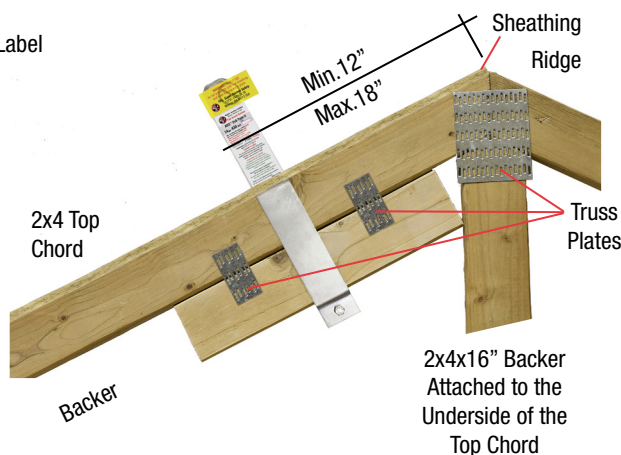


Fig.15

Leg Side "A"
Weld Nut

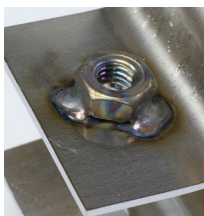


Fig.16

Attachment Bolt



Fig.17

Leg Side "B"



Attach w/1/2" Hex Driver

Top Chord Compatibility

Part No.	Model	Top Chord
1022	ARS 2x4	▲ 2x4
1006	ARS 2x8	▲▲ 2x8
2821	Tile Roof 2x8	▲▲ 2x8
1068	Type II 2x8	▲ 2x4

▲ Bolt through all 2x size top chords.

▲▲ Bolt under 2x4/2x6/2x8.

▲ Requires 2x4x16" backer.

Bolt Under Top Chord

Fig.10

Preferred Attachment

Space at cord bottom allows for variances in 2X dimensions.

Lock Nut

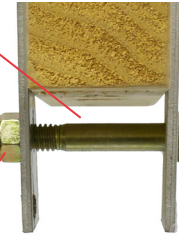
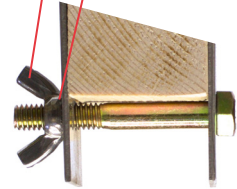


Fig.11

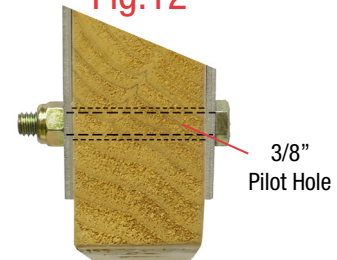
Wing Nut
Star Washer



Bolt-Thru Top Chord

Fig.12

Mark Bolt Hole Location and Drill a 3/8" Pilot Hole



ARS Type II Installation

Designed for truss plant installation onto 2x4 top chords. A 2x4 backer is attached with truss plates as shown at Fig.14. Place leg "A" with the weld nut facing the truss assembly table. Install the attachment bolt from the top side thru leg "B" bolt hole as shown at Fig.17.

Attachment to Top Chord

Open the anchor legs enough to fit over the top chord and backer. Bolt legs together with SAS supplied 5/16"x3/4" attachment as shown at Figs.16,17.

Warning Label: Anchors must not be used for fall protection until sheathing is in place. A temporary warning label covers the connector hole and is easily punctured when first used. Job site safety personnel are required to confirm the anchor has been installed correctly prior to use.

Warning Label

¡ADVERTENCIA! NO EMPLEARLAS PARA PROTECCIÓN CONTRA CAÍDAS antes de que la cubierta del techo y los refuerzos de las cerchas estén instaladas.

WARNING! DO NOT USE for fall protection until roof sheathing and truss bracing are in place.
Mfg. Super Anchor Safety
17731-147th St. SE
Monroe, WA 98272 USA

SAS Factory Supplied 5/16"x3/4" sst Attachment Bolt.
Do not substitute with other types.

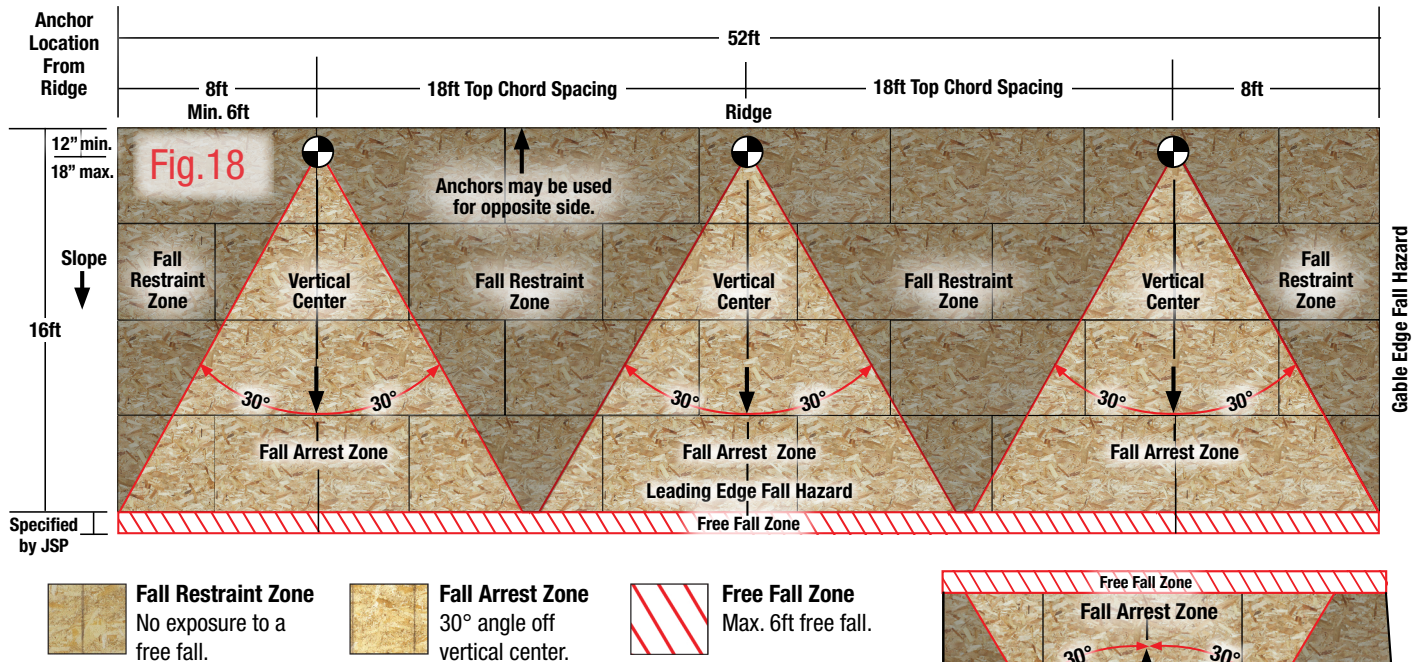
Fall Protection Service Zones

Project safety personnel are required to implement a job specific fall protection plan, (JSP) identifying free fall and swing fall hazards, and instructing workers to observe fall protection service zones as shown at Fig.18. Prior to use for fall protection, sheathing is required to be installed in the area of the anchors location as shown at Figs.18,19 and 20.

ARS fall protection service Zones are based on the following factors:

- Rafter length and top chord spacing.
- 30° Angle off left and right of vertical center.
- Max. 3,600lb in plane load applied to the top chord.

- Anchor location from the hip/ridge min.12"max. 18" or as specified by the truss mfg. EOR* or qualified person*.



Fall Protection System Example

Figs.19,21, are examples of a typical PPE fall protection rigging system using a vertical lifeline or SRL-LE.

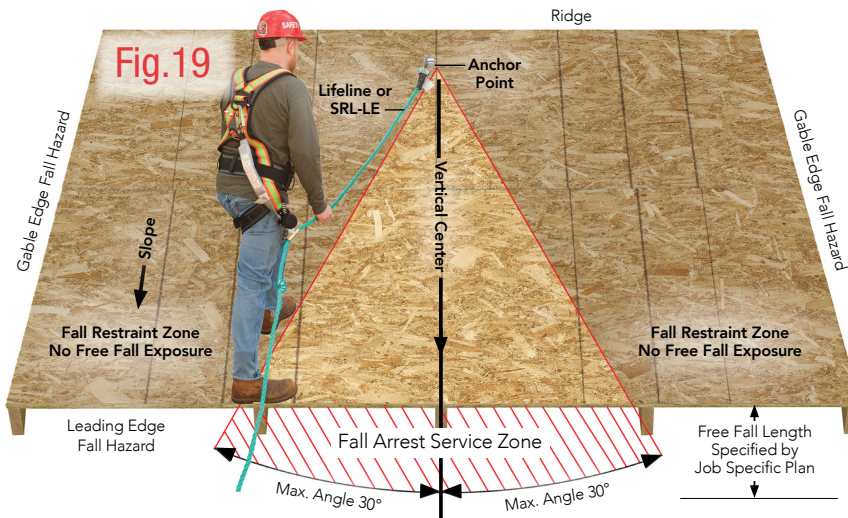


Fig.20

ARS dual purpose anchors provide fall protection for both sides of a roof.

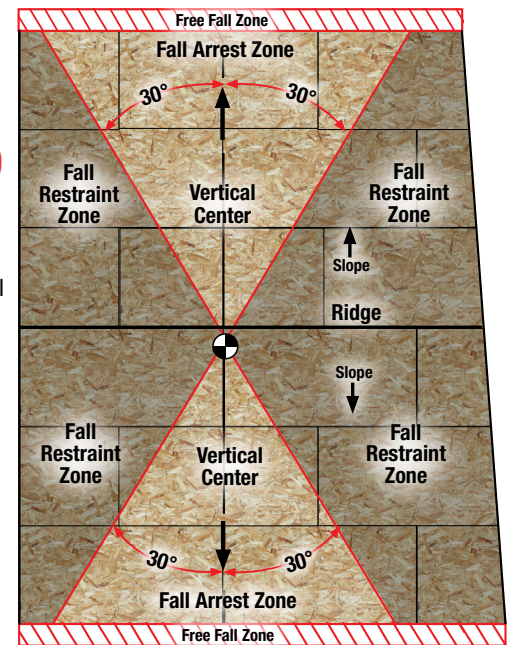
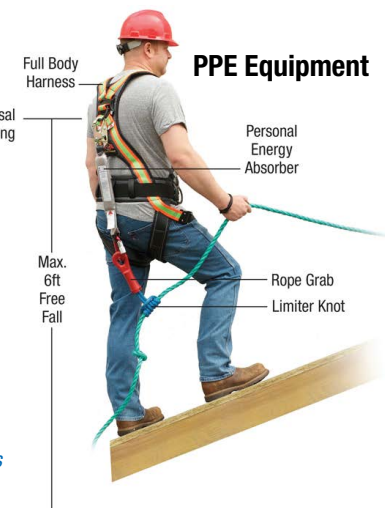


Fig.21



Energy Absorber (E/A)

Workers are required to use an OSHA or ANSI compliant E/A.

E/A Type	Max. Force	Avg. Force
Personal	1,800lb	900lb
SRL-LE	1,800lb	1,350lb

OSHA Free Fall Length

Max.6ft based on the following PPE rigging:

- Harness dorsal D-ring height above the leading edge.
- Service length of personal E/A vertical position. See Fig.20.
- Length of lifeline slack.

Typical Fall Hazards:

- Leading and gable edges
- Openings in the work surface
- Objects in a swing fall path
- Levels below the work surface

Fall Protection Definitions

Fall Arrest OSHA 1910.140

"A system used to arrest an employee in a fall from a walking-working surface."

Fall Restraint OSHA 1926.751

"A means of fall protection that prevents the user from falling any distance."

Visual Inspection

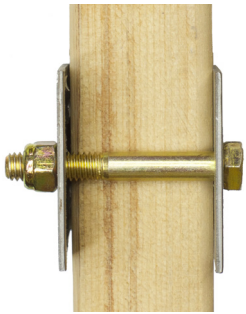
Prior to use for fall protection, inspect the underside of the top chord and confirm if the anchor attachment bolt and teko nails are installed. See Figs.22, 23.

Installation Record

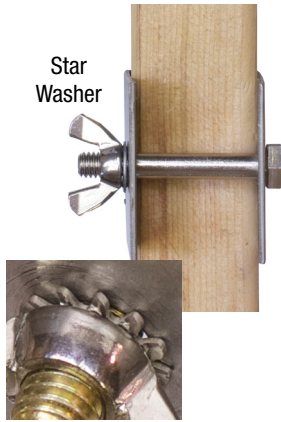
Project safety personnel are required to include an inspection document in the JSP, confirming the anchor has been installed as specified by **SAS** and is approved for fall protection use.

Figs.22a

Bolt w/Lock Nut

**22b**

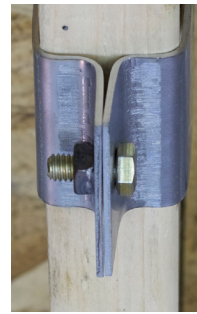
Bolt w/Wing Nut and star washer

**22c**

Bolt-Thru w/Lock Nut

**22d**

Bolt w/Weld Nut



Type II No Teko Nails Required

**Fig.23**

3 Teko Nails Both Legs

Anchor Inspection

The following are **SAS** recommendations for basic inspection procedures. Project safety personnel are required to draft their own inspection program which should include the framing to which the anchor is attached. A copy of the JSP, anchor inspection and **SAS** instruction manual should be placed in the finished building for access by the property owner.

☒ **Remove From Service.** ☒ **Corrective Action Required.**

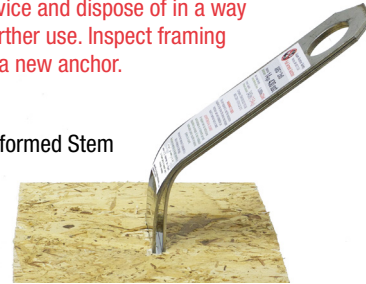
- Does not pass visual inspection. ☒ Figs.22. Install anchor correctly. ☒
- Teko nails are missing. ☒ Fig.23. Install teko nails. ☒
- PID label is missing. ☒ Figs.2,3,13. Replace anchor. ☒
- Anchor stem if deformed. ☒ Fig.24. Replace anchor. ☒ Do not re-bend the stem.
- Subjected to a fall. ☒ Replace anchor. ☒

Fig.24**Damaged Anchor**

Anchor stems are deformed when subjected to approx. 450lbs of force resulting from a free fall, abuse during installation, materials loading or use for work positioning.

Remove from service and dispose of in a way that prevents further use. Inspect framing prior to installing a new anchor.

Deformed Stem

**Roof Flashings**

Part No.	Material	Roofing	Size
2001	Black PVC	All Types	8"x10"
2018	Gray EPDM	Metal	8"x10"
2020	Alum EPDM	Tile	20"x20"

Stem Covers

Stem covers are required to prevent water penetration thru the stem seams.

Fig.27

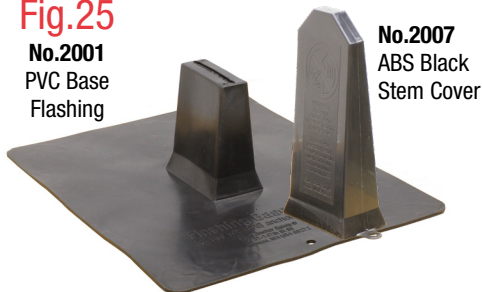
No.2018 Alum EPDM Base Flashing



No.2808-T Terra-Cotta Stem Cover

Fig.25

No.2001 PVC Base Flashing



No.2007 ABS Black Stem Cover

Fig.26

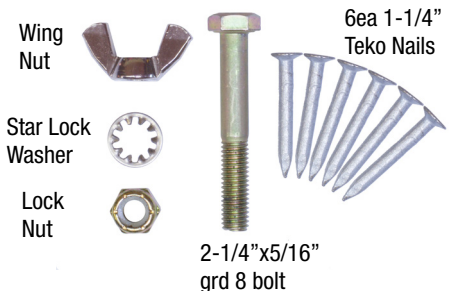
No.2018 EPDM Base Flashing



No.2808-G ABS Gray Stem Cover

SAS Factory Bolt Kit

Use only **SAS** bolt kits supplied with anchors at time of purchase. Use lock nuts to attach the bolt. Wing nuts should be used only in an emergency if hand tools are not available. Request replacement bolt kits if needed.

Fig.28 No.2006 ARS Bolt Kit**OSHA Definitions****Work Positioning OSHA 1926.502(e)**

A device, system, or PPE that is rigged to allow a worker to be supported on an elevated vertical surface, such as a wall, and work with both hands free. Note: ARS anchors are not rated for work positioning.

Qualified Person OSHA 1910.140

"one who by possession of a recognized degree, certificate, or professional standing, or who by extensive knowledge, training and experience, has successfully demonstrated the ability to solve problems relating to the subject matter, work or project."