



SUPER ANCHOR SAFETY®

SAS Lifting/Hoisting D-Plate Anchors Instruction Manual 2021

ENGLISH
VERSION

!WARNING TO USER!
You are required to read and use the Instruction/ Specification manual supplied at the time this device was shipped. Improper use and installation can result in serious injury or death. Follow inspection requirements before each use.

D-Plate Model Specifications

No.1037-G5M HDG Steel. See Fig.1

Material: HDG Q235/A-36 steel

No.1090 Q-235 cast loop top

Min. Breaking Strength: MBS 12,000lb with load applied at angles "A"/"B"/"C" as specified in Lifting/Hoisting Angles pg.2.

Load Safety Factor: 3/1

Max. Live Load: 4,000lb

No.1037-S5M

Material: 304 sst base plate

No.1090-S 316sst cast loop top

Min. Breaking Strength: MBS 12,000lb with load applied at angles "A"/"B"/"C" as specified in Lifting/Hoisting Angles pg.2.

Load Safety Factor: 3/1

Max. Live Load: 4,000lb

No.1301-G10M HDG Steel. See Fig.3

Material: HDG Q235/A-36 steel

No.1093 Q-345 cast loop top

Min. Breaking Strength: MBS 15,000lb with load applied at angles "A"/"B"/"C" as specified in Lifting/Hoisting Angles pg.2.

Load Safety Factor: 3/1

Max. Live Load: 5,000lb

No.1301-S10M

Material: 304 sst base plate

No.1093-S 316sst cast loop top

Min. Breaking Strength: MBS 15,000lb with load applied at angles "A"/"B"/"C" as specified in Lifting/Hoisting Angles pg.2.

Load Safety Factor: 3/1

Max. Live Load: 5,000lb

Lifting Hooks/Rigging

All connectors and rigging components attached to the D-plate loop top must be rated for the intended use.

D-Plate Position/Loop Top Orientation

The orientation of the D-Plates loop top onto the equipment or structure it is installed, is required to be specified by a certified engineer or "Qualified Person"*. See Figs. 7 for loop top loading angles.

Note: The end user is responsible for how the D-Plate is attached to the equipment, device or structure it is installed on.

D-Plate Attachment

Bolt Attached: Requires 4 ea 1/2" grade 8 or 18-8 type stainless steel hex head bolts and lock nuts. Flat washers are optional.

Weld Attached: Welding is required to be specified by a certified engineer or "Qualified Person" and the welding performed by a certified welder.

Backer Plate Installation

Backer plates are specified for applications where direct bolt attachment is not possible. Use for concrete bolt-thru or wood framed structures. See Fig.11.

Lifting/Hoisting Compliance:

ASME B30.20-2013

Fall Protection Compliance:

OSHA 1925.502

ANSI Z359.18 Type A/T

ANSI/IFCA I-14.1-2001

**Qualified Person" see OSHA definition

SAS = Super Anchor Safety

X = Inspection Points

Tensile Test Reports:

No. 1037 Models: Request Intertek Report 08-2020

No 1301 Models: Request Intertek Report 12-2019

The above reports were for CRA and CRO commercial anchors with 1090 and 1093 loop tops.

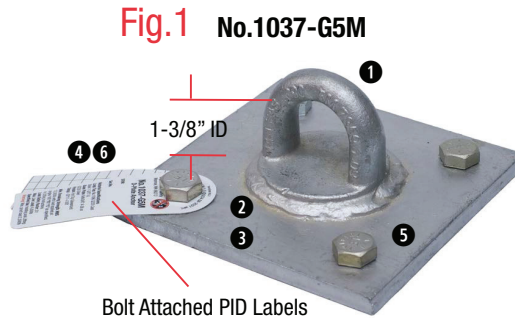


Fig.1 No.1037-G5M

Fig.2 Top View Dimensions
3/8"x6"x6" Base Plate

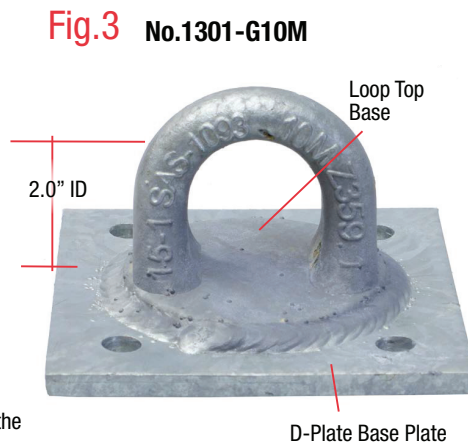
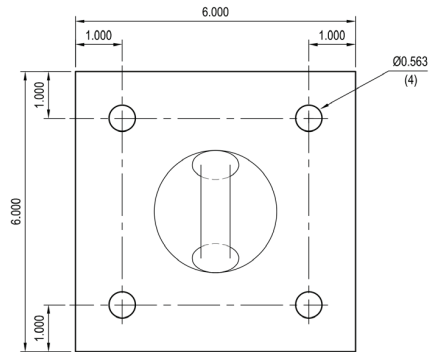


Fig.3 No.1301-G10M

Fig.4 Top View Dimensions
3/8"x6"x6" Base Plate

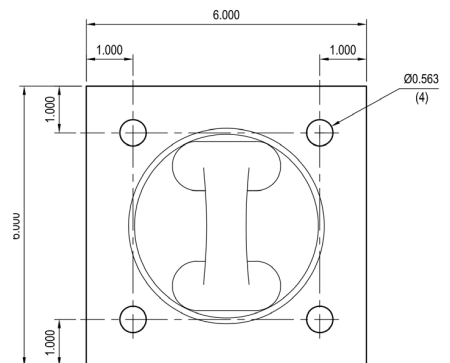


Fig.5

Compatible Connectors

Hooks, shackles and connectors used for lifting must rotate freely inside the loop top to avoid binding. There should be a margin between the crown and loop top base.



Fig.6

Non-Compatible Connector

The lift hook crown is too large to rotate freely inside loop top.



WARNING!

Avoid non-compatible connections as shown at Fig. 6. Lifting hooks must be sized to fit the Loop Top ID and are required to rotate freely.

Lifting/Hoisting Angles

D-Plates are specified for the lifting angles shown in Figs. 7. Lifting at angles not shown here or exceeding the D-Plates specified max. live load, may damage the D-Plate resulting in serious injury, death or damage to equipment and property.

Fig.7.0

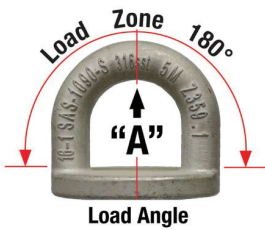


Fig.7.1

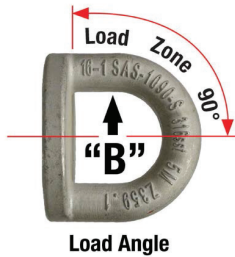


Fig.7.2



Fig.7.3



Fig.7.4

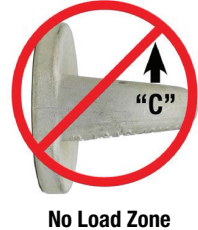


Fig.9 Temporary Zip-Tied PID Labels

Factory supplied D-Plate PID labels require permanent installation. See Fig.1.

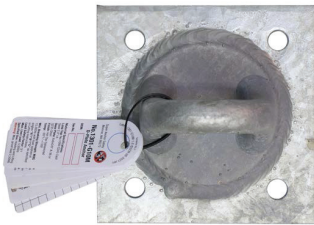


Fig.10 Tapped Bolt Attachment

Specify at time or ordering



1/4"-20 X 1/2" SST
Hex Tap Bolt

Fig.8

Stamp Mark Example

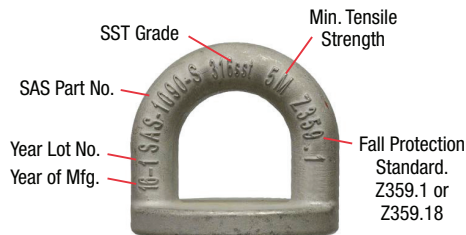


Fig.11

Backer Plate

Example of wood framed installation



Product ID(PID) Label Attachment to D-Plate

As shown at Fig.9, remove the PID labels and attach to the D-Plate as follows:

Bolt Attached D-Plates: Shown at Fig.1, attach PID labels to one of the D-Plate corners with an attachment bolt.

Weld Attached D-Plates: Shown at Fig.10, attach grommated label pack with a 1/4" hex bolt to the threaded bolt hole after welding.

Note: At time of ordering specify if D-Plates will be bolt or weld attached. PID labels are replaceable upon request.

Inspection

Inspect prior to each use and annually by a qualified person. The following are recommended inspection points. End users are required to draft their own inspection program.

☒ = Remove From Service ☑ = Repair

- 1 Loop Top deformation or fracture at the base plate. ☒
- 2 Cracked loop top base plate weld. ☒
- 3 Red rust or abrasions. Clean and paint. ☑
- 4 PID labels not readable or missing. Replace ☑
- 5 Missing or damaged attachment bolts. ☒ Replace ☑
- 6 Annual inspection not recorded on inspection label. ☒ Until inspected. Return to service after inspected.

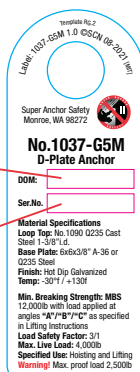
Fig.12 D-Plate Factory Certified Proof Loading

D-Plates are factory proof loaded to 3,600lb at angle "B" and "C". Certification reports are archived at SAS factory and included with each order. Testing is performed with current year calibrated CSA certified test equipment.

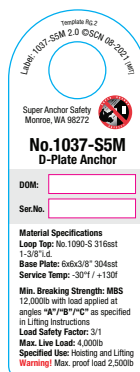
SUPER ANCHOR SAFETY®									
17731 - 147th St. SE, Monroe, WA 98272 USA									
Pg. 1.0									
D-Plate 3,600lb Proof Load Certification									
Tensile Test Program: Maximum Force: 3,600lb @ 2cm/min Force Duration: 2 minutes Passes: No visible deformation No visible fracturing Failure: Visible deformation or fracturing					Test Technician Stamp 				
Equipment: Tensile Test: United SFM-30 Load Cell: Genetec 15k Recorder: Mistralpro Calibration Date: Current					Force Direction 				
Part No.	DOM	Serial No.	Loop Top Top No.	Stamp Marks	Lot	Pass	Fail	By	Date
1037-G5M	09-2021	1037-000001	1090	21	1	x		EC	09-15-2021

Primary Labels

1037-G5M



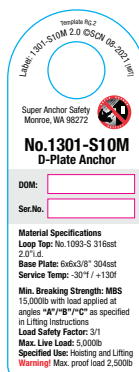
1037-S5M



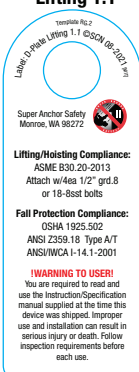
1301-G10M



1301-S10M



D-Plate Lifting 1.1



D-Plate Lifting 1.2



D-Plate Lifting 1.3



D-Plate Inspection 1.4



Assembly date at SAS factory

Serial No.