

2x4 Floor Joist Safety Bar™



Moveable/Temporary Fall Protection Anchorage.

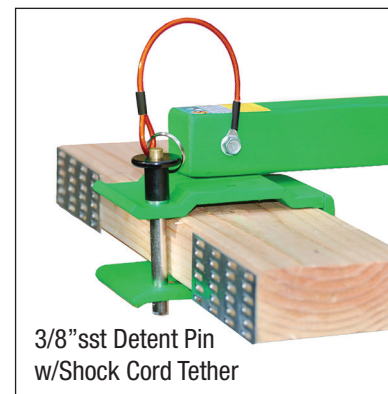
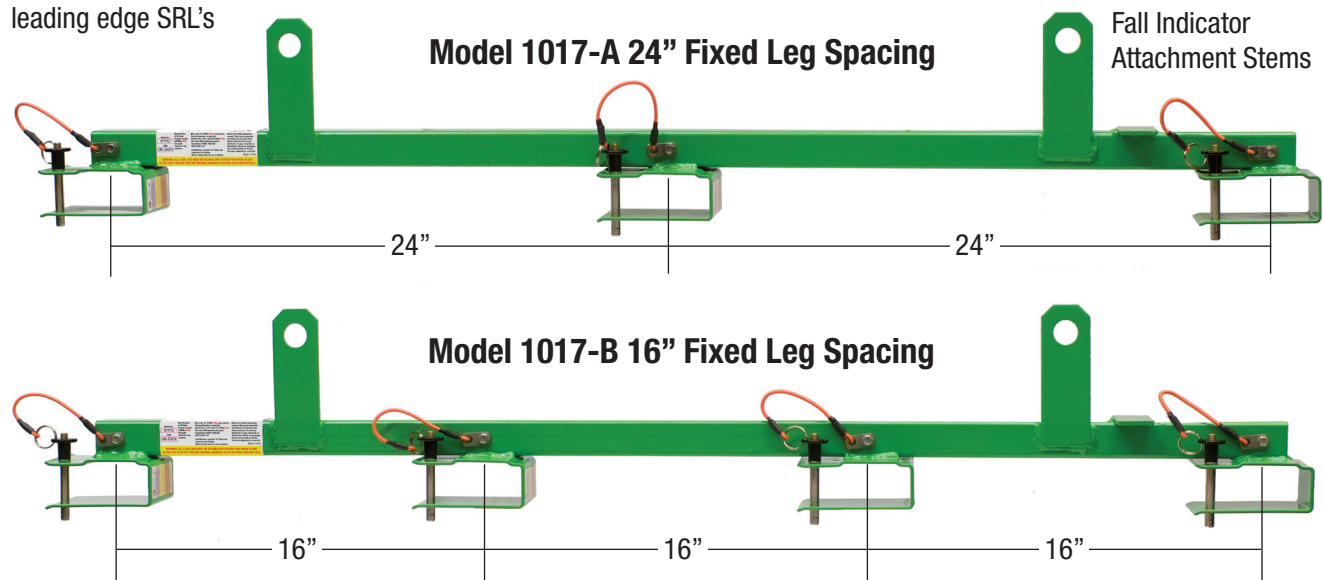
Super Anchor Safety heavy duty safety bars are built with 1/8" thick powder coated steel for durability and long service life. Fixed or adjustable legs are perfectly centered to fit 12", 16" and 24" joist/truss spacing.

1" d PPE connector hole is compatible with class 1 connectors. Use with lifelines and leading edge SRL's

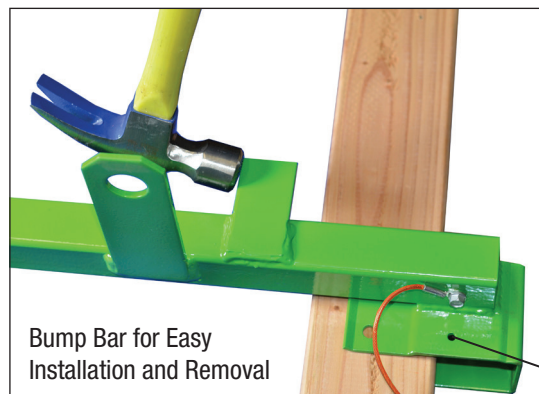
**In Stock Item Includes UPS
UPS Shipping Same or Next Day
Anywhere in the Continental USA**

Specifications

- Perfect top chord spacing
- Safety green powder coated
- Fall indicator shock absorbing PPE attachment stems
- 3/8" sst 10,000lb tensile strength detent pins
- Shock cord tethers



3/8" sst Detent Pin
w/Shock Cord Tether



Bump Bar for Easy
Installation and Removal



1-1/2"x1-1/2"x1/8" Cross-bar

Leg Centering Holes

3 Standard Models

Model	Leg Spacing	Truss Spacing	wt/lb
1017-A	24" Fixed	24"	15
1017-B	16" Fixed	16"	
1017-C	Adjustable	12"-16"-24"	

Custom Models available

Compliance

ANSI Z359.18-17 Type D
OSHA 1926.502

User Specifications

- 310lb max. user weight
- 2 person capacity fall arrest

2x4 Floor Joist Safety Bar™

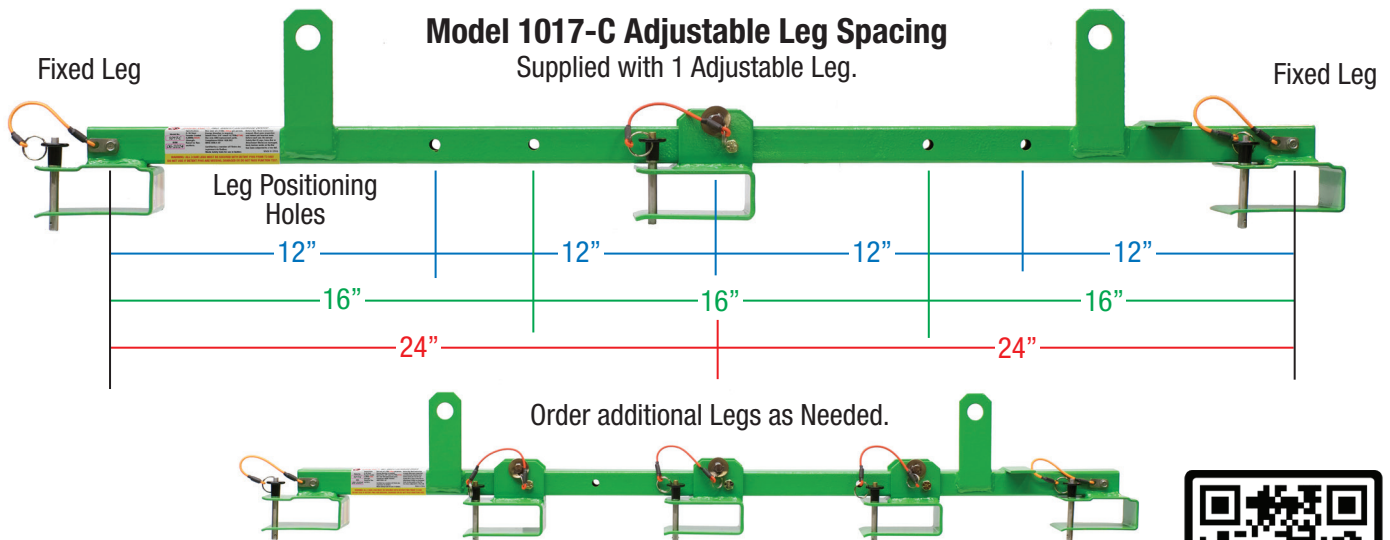


Fall Protection Made Easy

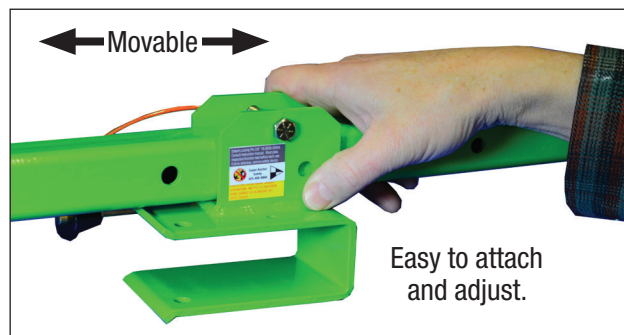
Stacking trusses and I-Joist pose a challenging fall protection problem. Attaching a safety bar to 3 chords provides anchorage for 1 or 2 persons. Bar positions are easily moved and locked in place with detent pins. Efficiency is increased using several bars for safety and layout.

Visual Indicator

The attachment stem will deform when subjected to a free fall providing a warning not to use.



No.1017-G Adjustable Leg



Super Anchor Safety

17731-147th St SE Monroe, WA 98272

Ph: 425-488-8868 www.superanchor.com